

## Sutherland Avenue, W9

£610,000

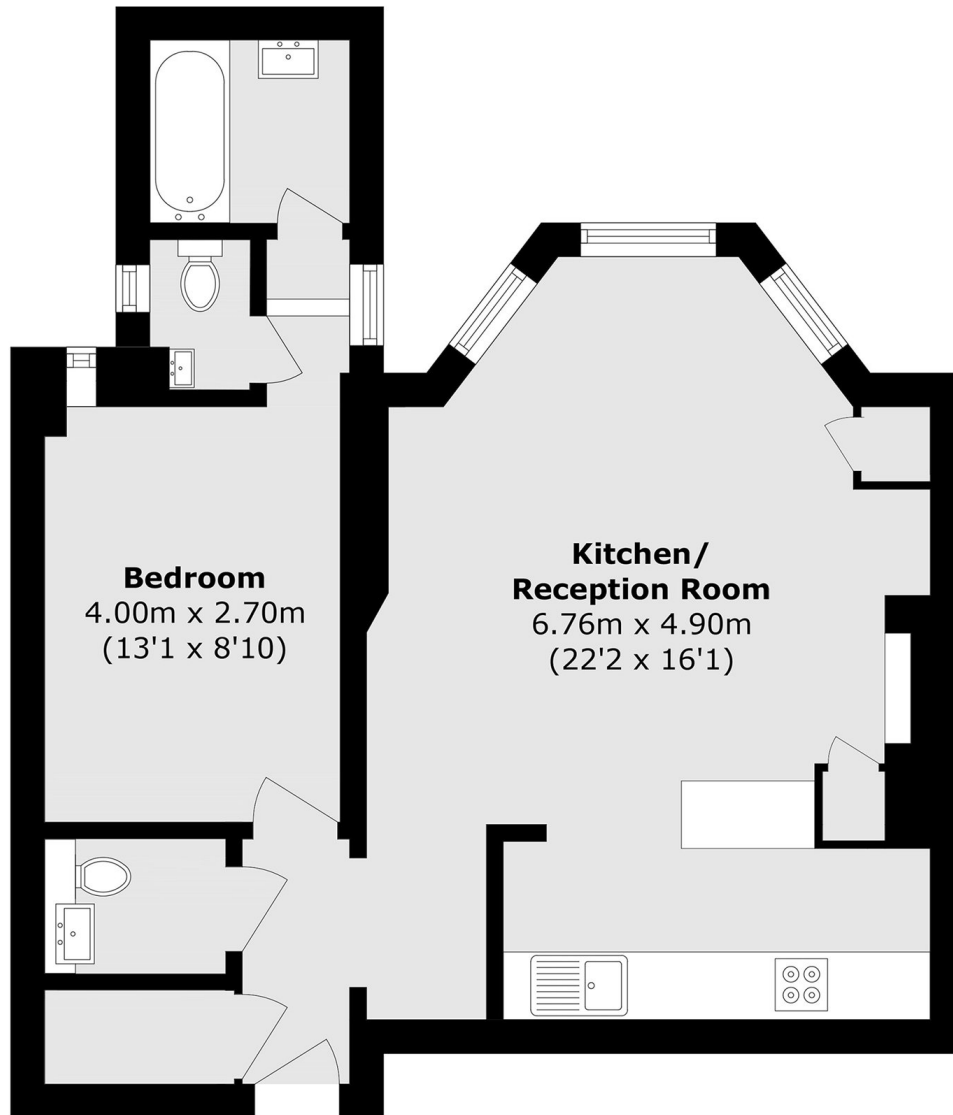
A recently refurbished lower ground flat set in a charming Victorian conversion. This well-presented property comes complete with a double bedroom, open plan kitchen/reception, a bathroom and additional WC and wooden flooring throughout.

Sutherland Avenue is a tree-lined road in the heart of Maida Vale and it's within walking distance of multiple transport links, including Warwick Avenue and Maida Vale underground stations (Bakerloo line) and the canal in Little Venice.

### Features

- Recently Refurbished
- Open Plan Kitchen/Reception
- Access to Communal Gardens
- Wooden Flooring Throughout
- Prime Location
- Chain Free

# Sutherland Avenue, Maida Vale, W9



Total area (approx.): 53.5 sq. m (575.8 sq. ft)