

# 33 Castle Close - Offers In Excess Of £250,000

Weeting Brandon Suffolk IP27 0RQ

**chilterns**

Estate & Letting Agents



*"Consistently providing outstanding service to our clients"*

# Offers In Excess Of £250,000

## The Property

Nestled in the tranquil setting of Castle Close, Weeting, this charming detached chalet-style house offers a delightful blend of character and spacious living. With four well-proportioned bedrooms, including a versatile ground floor bedroom that can easily serve as an office, this property is perfect for families or those seeking a peaceful retreat.

The inviting lounge/diner provides an ideal space for relaxation and entertaining, allowing for a seamless flow between living and dining areas.

Outside, you will find well-maintained gardens, providing ample space for outdoor activities. The property also benefits from parking and a garage.

Situated on the edge of the village, this home offers a serene environment while still being within easy reach of local amenities. Whether you are looking for a family home or a quiet escape, this property at Castle Close is sure to impress with its spacious accommodation and delightful features.

**Agent's Note:**  
Please be aware that images of the property may have been digitally enhanced, edited, or staged using artificial intelligence, and may not reflect the current presentation or furnishings.

## AGENTS NOTE

We understand that the large Oak tree in the front garden of this property is subject to a Tree Preservation Order (TPO) and is protected accordingly.

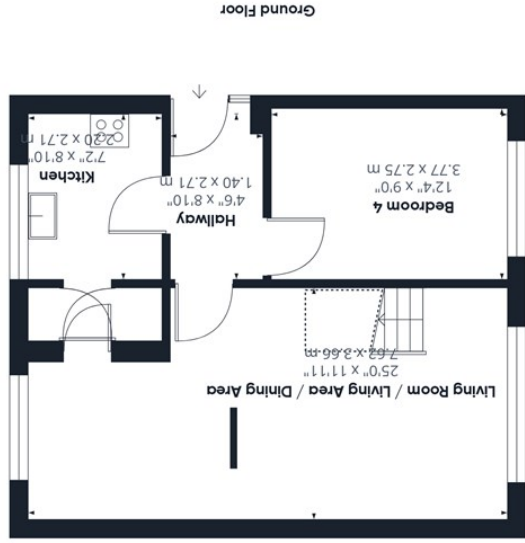
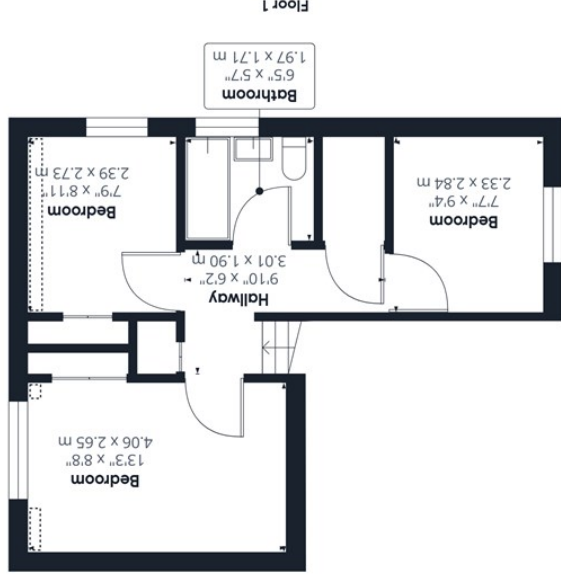
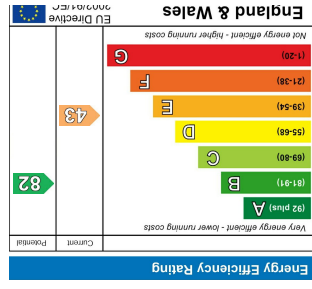
## Features

- Detached Chalet Style House
- Edge of Village With Farm Land Views
- Corner Plot
- Lounge & Dining Room
- Kitchen
- Four Bedrooms Over Two Floors
- Bathroom
- Oil Fired Central Heating
- Upvc Double Glazing
- Garage & Mature Gardens





These sales particulars have been produced as a general guide only and we would draw to your attention that we have not carried out a detailed Survey of the property nor have we tested services, appliances or specific fittings. Whilst measurements and statements given within the details are provided in good faith, their accuracy should not be relied upon. If there are any points about which you may be uncertain or would like further clarification, we would suggest that you telephone this office and speak to our staff who will endeavour to assist you.



While every attempt has been made to ensure accuracy, all measurements are approximate, not to scale. This floor plan is for illustrative purposes only.

Reduced headroom (below 1.5m/4.92ft)

(1) Excluding balconies and terraces

**Approximate total area<sup>m</sup>**  
 903.15 ft<sup>2</sup>  
 83.91 m<sup>2</sup>  
**Reduced headroom**  
 9.29 ft<sup>2</sup>  
 0.86 m<sup>2</sup>