



GUIDE PRICE OF £500,000 - £525,000

Burleigh Road,
Shiphay, Torquay, TQ2
6JX

This superb extended five bedroom detached house, with a one bedroom annexe situated in the sought after Shiphay area of Torquay. The town centre and seafront are a few minutes drive away plus it is served by several well regarded schools including the boys and girls grammar schools. The property comprises of cloak, lounge, large extended kitchen/diner perfect for entertaining, one bed annexe, upstairs are five generous sized bedrooms and family bathroom. Outside is a large sunny background with three seating/patio areas and lawn. At the front is parking for 2/3 cars. Viewing is highly recommended.



uPVC door into:-

PORCH uPVC door into:-

HALLWAY Cloak with low level WC and hand wash basin, radiator and understairs cupboard.

LOUNGE A larger than average lounge, window to front, radiator, bi folding doors into kitchen/diner.

KITCHEN/DINER A very large extended kitchen/diner, modern grey fitted kitchen with drawers and cupboards over and under quartz surfaces, range cooker with overhead extractor, space for fridge/freezer, plumbing for washing machine, sink unit, window to back, door to back garden out to patio large island seating for 4/6, radiator, sliding doors out to patio back garden.

ONE BEDROOM ANNEXE

LOUNGE With sliding doors out patio/garden area.

SHOWER ROOM Large cubicle shower, low level WC, wash hand basin with vanity surround, mirror with light, wall hung radiator/towel rail.

BEDROOM A double bedroom with window to front of property and radiator.

The annexe can be accessed from both inside and outside of the property.

MASTER BEDROOM A large double bedroom with fitted wardrobes, window to front and radiator.

ENSUITE With cubicle shower and hand wash basin.

BEDROOM TWO Another good sized double bedroom with fitted wardrobe, window to back garden and radiator.

BEDROOM THREE A double bedroom with window to front and radiator.

BEDROOM FOUR A double bedroom with window to back garden and radiator.

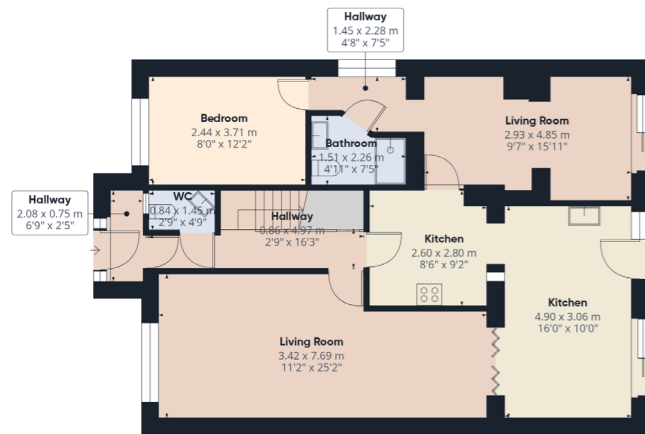
BEDROOM FIVE Can accommodate a double bed, radiator and window to back.

BATHROOM Comprising of bath with overhead shower, wash basin with vanity surround, low level WC, radiator, mirror, obscure window to back and radiator.

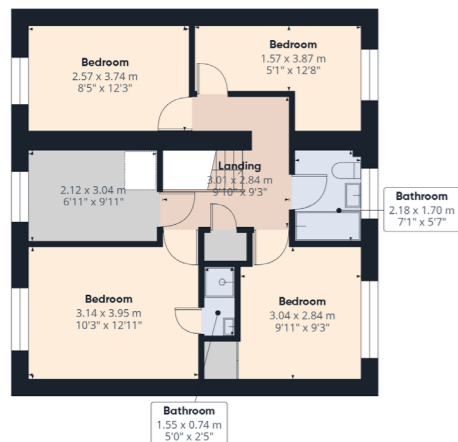
OUTSIDE

REAR GARDE A very large landscaped sunny harden, three large patio/seating areas and a lawned area.

FRONT Parking for 2/3 cars.



Floor 0



Bathroom

Address 'Burleigh Road, Shiphay, Torquay, TQ2 6JX

Tenure "Freehold"

Council Tax Band 'D'

EPC Rating '58 | D'

Taylor's Estate Agents
256 Torquay Road
Paignton
TQ3 2EZ