



Petersham Place, SW7

£2,423 Per week

A beautifully presented five bedroom mews house arranged over four thoughtfully designed floors, offering well-proportioned living spaces and a refined contemporary finish throughout.

Petersham Place is situated just moments from Gloucester Road, providing convenient access to a wide selection of bars, restaurants, and cafés, including Como Momo Kensington.

Features

- Five Bedrooms House
- Three Bathrooms
- Four Storey
- Open Plan Reception
- Home Sauna
- Ample Storage Space

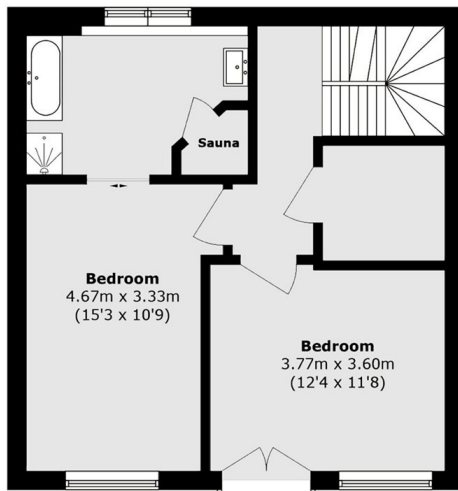


Petersham Place, SW7

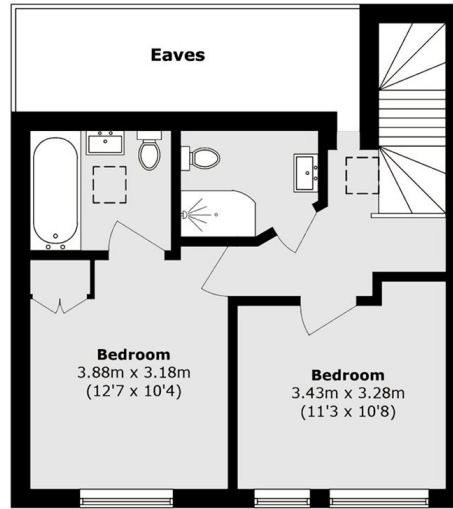
The property further features a private home sauna and a generous open plan kitchen and reception area, creating an inviting setting for both everyday living and sophisticated entertaining.



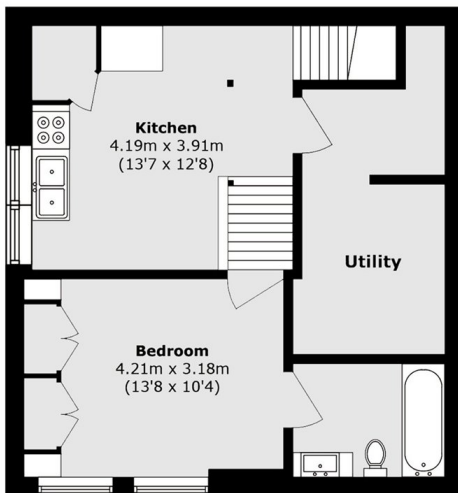
Petersham Place, London, SW7



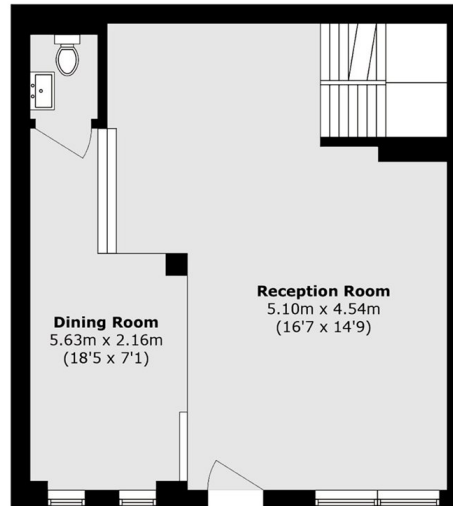
First Floor



Second Floor



Lower Ground Floor



Ground Floor

Total area (approx.): 187.5 sq. m (2018.2 sq. ft)
(Excluding Eaves)