

abbotFox

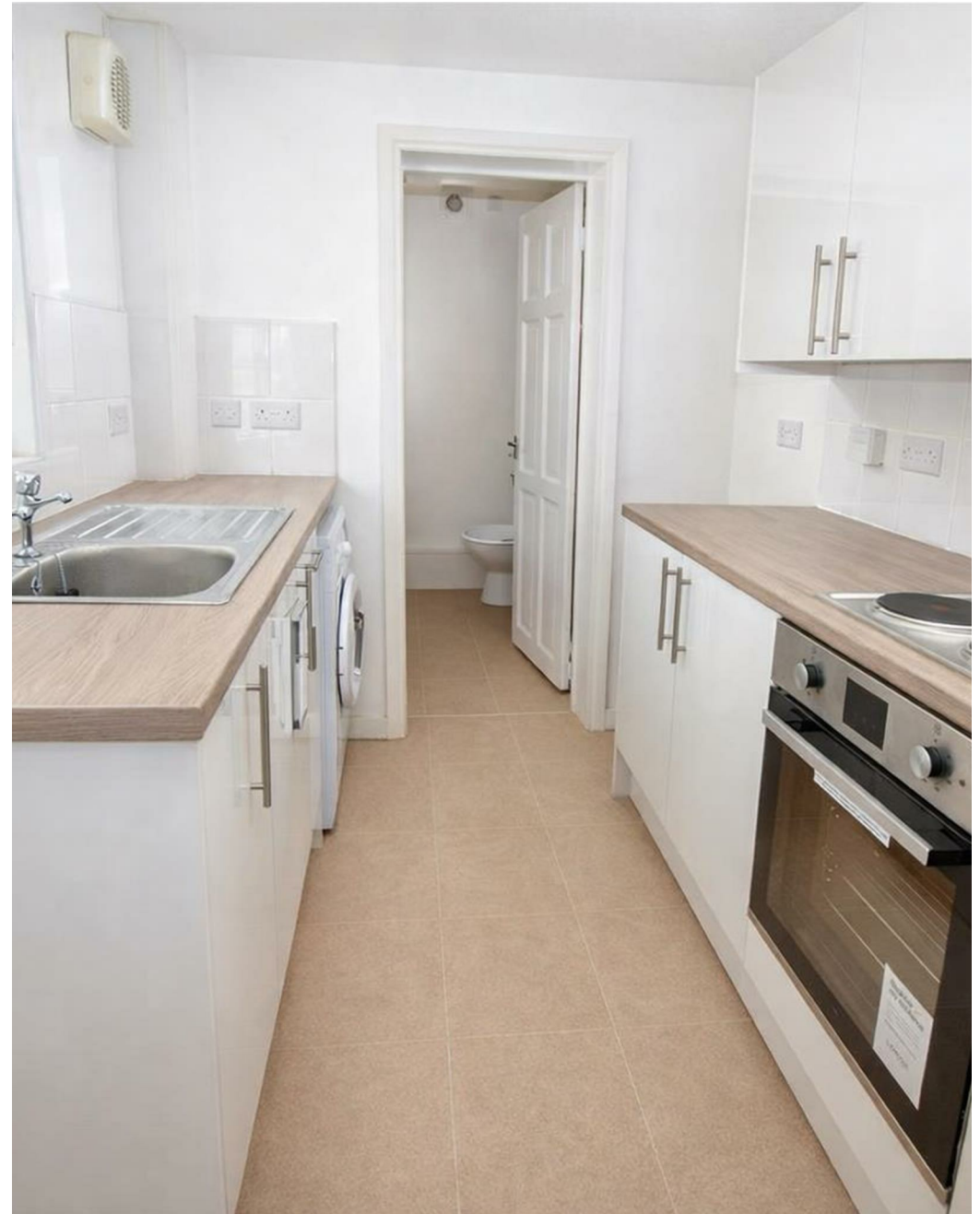


Heigham Street, Norwich  
*£1,200 PCM*

“

We are a team of genuine individuals who hold a deep passion for both property and marketing. Collectively, we bring over 70 years of experience in the property market of Norfolk and Suffolk. Our affection for both counties runs deep, and we are enthusiastic about sharing our passion with you.

Colin McKenzie | **Branch Partner**







## THE DETAIL \_\_\_\_\_

abbotFox presents this beautifully presented terraced home, ideally positioned within walking distance of Norwich city centre.

Finished to a high standard throughout, the accommodation comprises a comfortable lounge, separate dining room, and a modern fitted kitchen with integrated appliances, complemented by a useful utility area and a contemporary ground floor bathroom.

To the first floor are two well-proportioned double bedrooms, alongside a versatile box room, ideal for use as a home office, dressing room or nursery.

Externally, the property benefits from an enclosed rear garden, offering a private outdoor space.

Situated in a highly convenient location, the property is within easy reach of a wide range of local amenities, as well as enjoying access to picturesque walks through Wensum Park and along the River Wensum.







## THE HIGHLIGHTS \_\_\_\_\_

- 3 Bedrooms
- Terrace House
- Enclosed garden
- Brilliant condition
- Close to local amenities
- Landscaped Garden
- Parking outside property

*Let's talk*

01603 660000

[sales@abbotfox.co.uk](mailto:sales@abbotfox.co.uk)

[@abbotfox](#)

EPC RATING -

Disclaimer – In accordance with the Property Misdescriptions Act, the company abbotFox gives notice that all descriptions, references to condition, necessary permissions for use and other details are given in good faith and believed to be correct, but any purchaser should not rely on them as statements of fact, and must satisfy themselves by inspection or other means, as to their accuracy.