



Price

£1,500 PCM

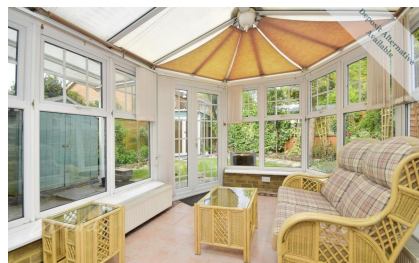
Fees Apply



Available 23/05/26

**Newbury Close
Folkestone CT20**

Wards
Helping you move forwards



Main Features

- 3 bedroom detached house
- Private garden
- Off road parking
- Alternative deposit option available
- Open house event
- Video tour available



Deposit required is £1,730.77
Shepway District - Council Tax Band Tax Band D

Renting a property is a big commitment and we recommend that you visit the local authority website and these websites which offer helpful information and advice about letting

www.gov.uk/government/publications/how-to-rent

www.gov.uk/private-renting

www.wardsofkent.co.uk/letting/our-tenancy-fees/

www.gov.uk/green-deal-energy-saving-measures

Call Dover 01304 201109 ■ wardsofkent.co.uk

IMPORTANT INFORMATION: Please note that administration fees are charged in addition to the rent and security deposit. Please contact our Lettings Team who will confirm the total costs involved in renting this property. For clarification, we wish to inform the prospective tenant that we have prepared these details as a general guide. The agent has not carried out a detailed survey nor tested the services, appliances, or specific fittings (unless otherwise stated), and no warranty can be given as to their condition. All room measurements are taken at floor level. We strongly recommend that all the information which we provide about the property is verified by yourself and your advisers. The contents of this publication are © Wards, 2015. Wards is a trading name of Arun Estates Limited Registered in England No. 2597969

Accommodation

GROUND FLOOR

Entrance Porch

WC

Store Room: 3.40m x 2.38m 11'2" x 7'10"

Lounge: 4.43m x 3.19m 14'7" x 10'6"

Dining Room: 2.52m x 2.80m 8'3" x 9'2"

Stairs

Kitchen: 2.52m x 2.77m 8'3" x 9'1"

Conservatory: 3.50m x 2.80m 11'6" x 9'2"

FIRST FLOOR

Bathroom

Bedroom 2: 2.67m x 3.71m 8'9" x 12'2"

Landing

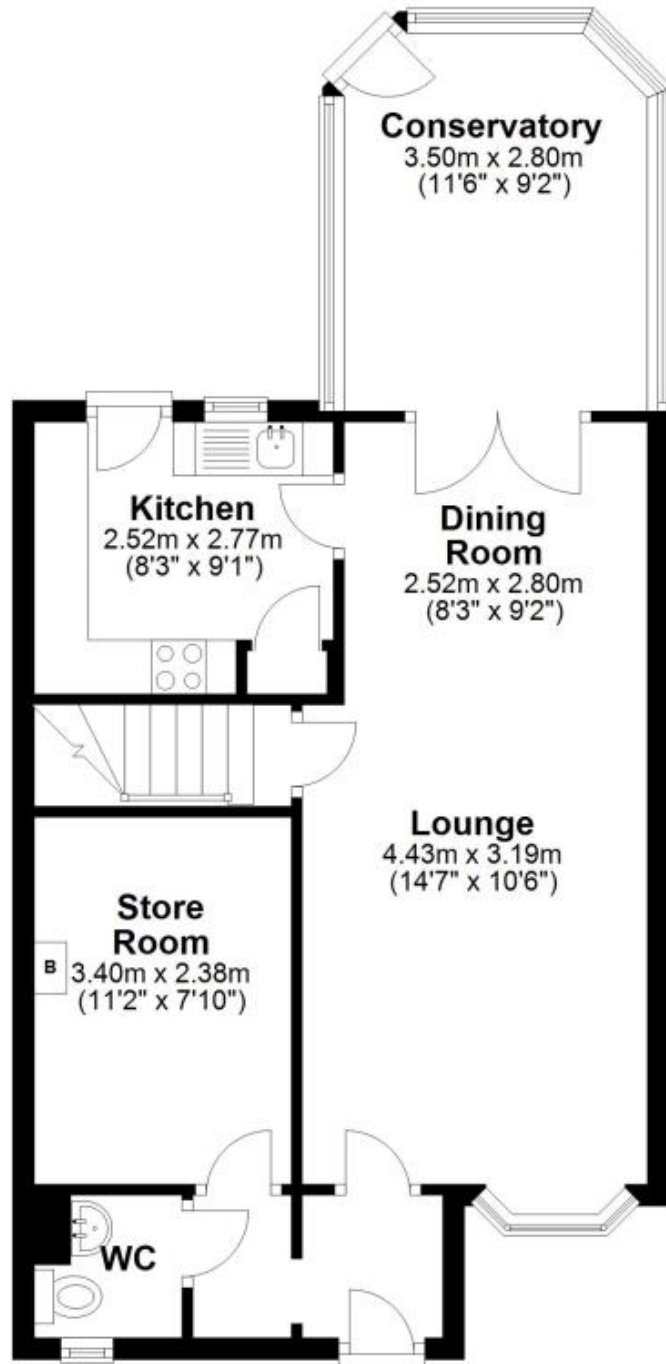
Bedroom 1: 4.21m x 3.08m 13;10" x 10'1"

Bedroom 3: 2.52m x 2.49m 8'3" x 8'2"



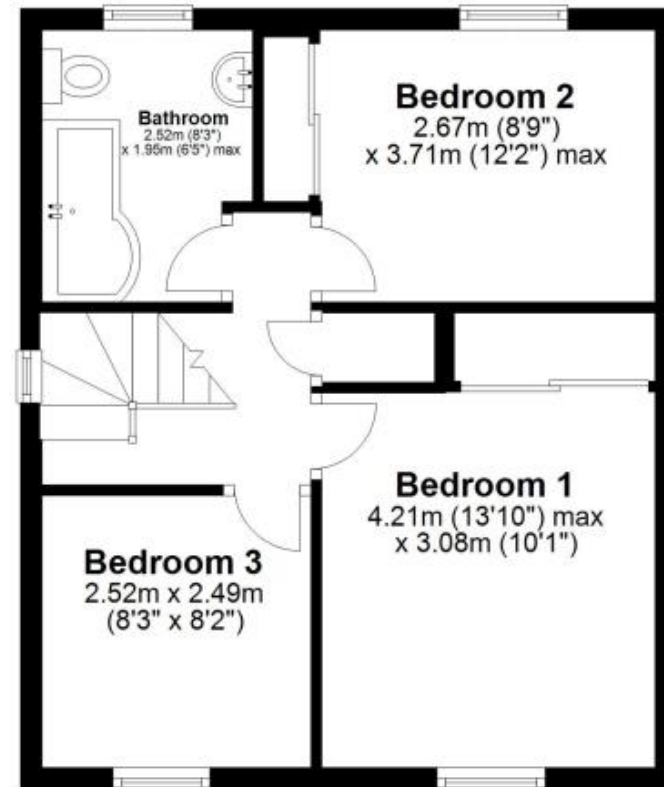
Ground Floor

Approx. 55.2 sq. metres (594.1 sq. feet)



First Floor

Approx. 39.1 sq. metres (421.3 sq. feet)



Total area: approx. 94.3 sq. metres (1015.4 sq. feet)