



24 Hawthorn Place, Didcot, OX11 6BF

£1,400 PCM - AVAILABLE NOW

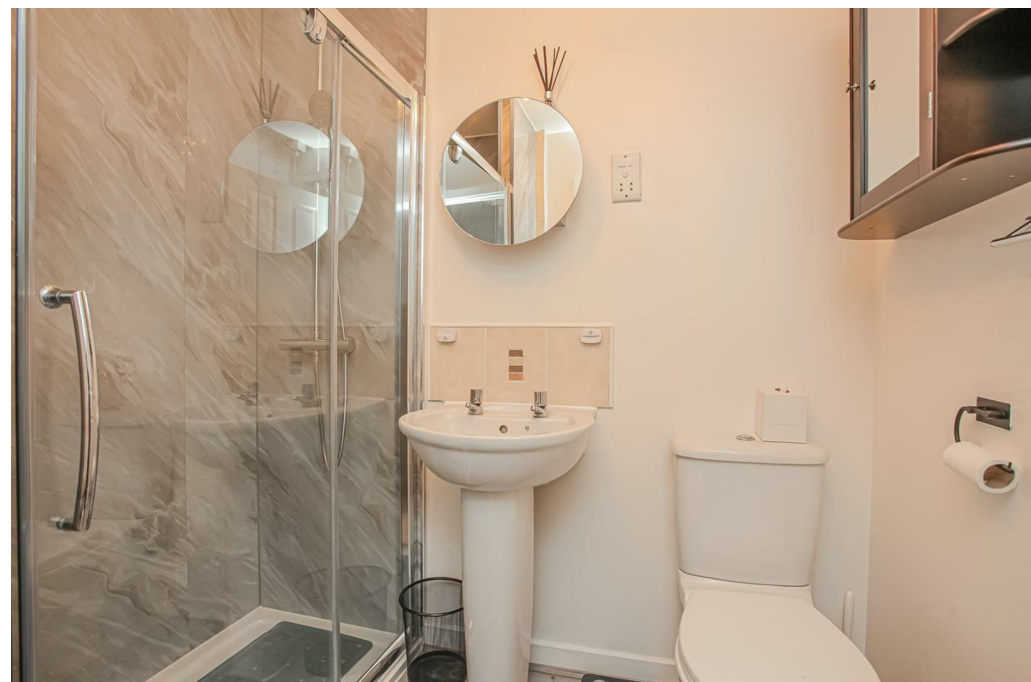
- 2 BEDROOM TERRACED HOUSE AT GREAT WESTERN PARK
- ALLOCATED PARKING
- GAS CENTRAL HEATING
- EPC RATING C
- GARDEN WITH 2 SHEDS
- COUNCIL TAX BAND C

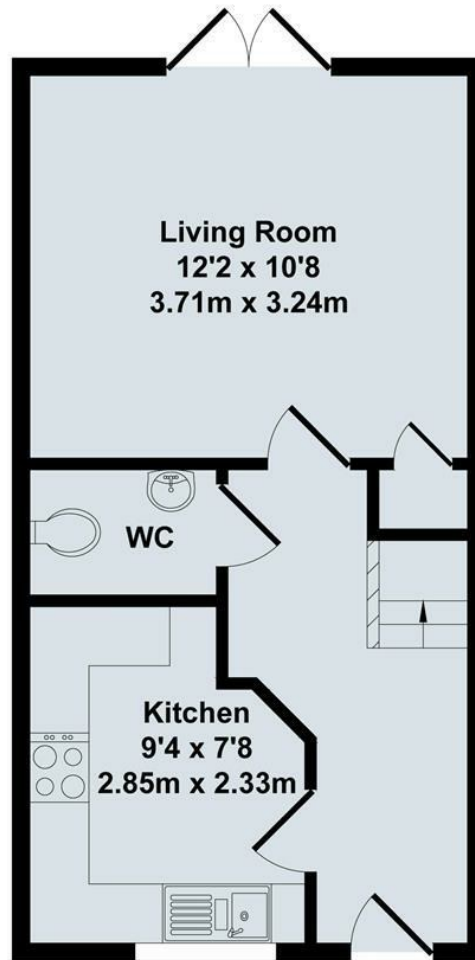
24 Hawthorn Place, Didcot OX11 6BF

Two bedroom, terraced house located on popular Great Western Park development. Fully fitted kitchen with washing machine, dishwasher, fridge/freezer, cooker, sitting room, with storage unit with doors out to enclosed rear garden. Two double bedrooms, air conditioning to bedroom one, a double bed and desk included in bedroom two. Bathroom with newly fitted large shower. Gas central heating, all UPVC. Allocated parking, garden has 2 sheds. EPC C, Council Tax Band C.

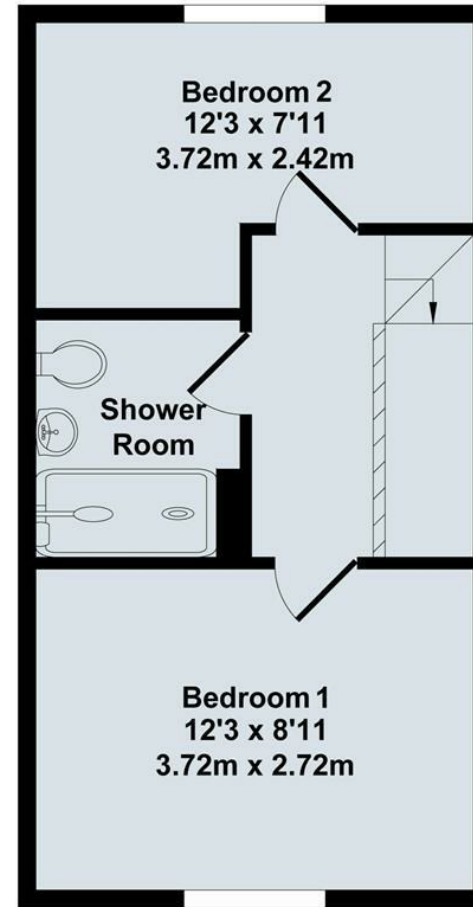


Council Tax Band: C

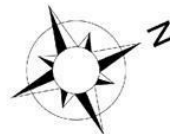




Ground Floor




First Floor

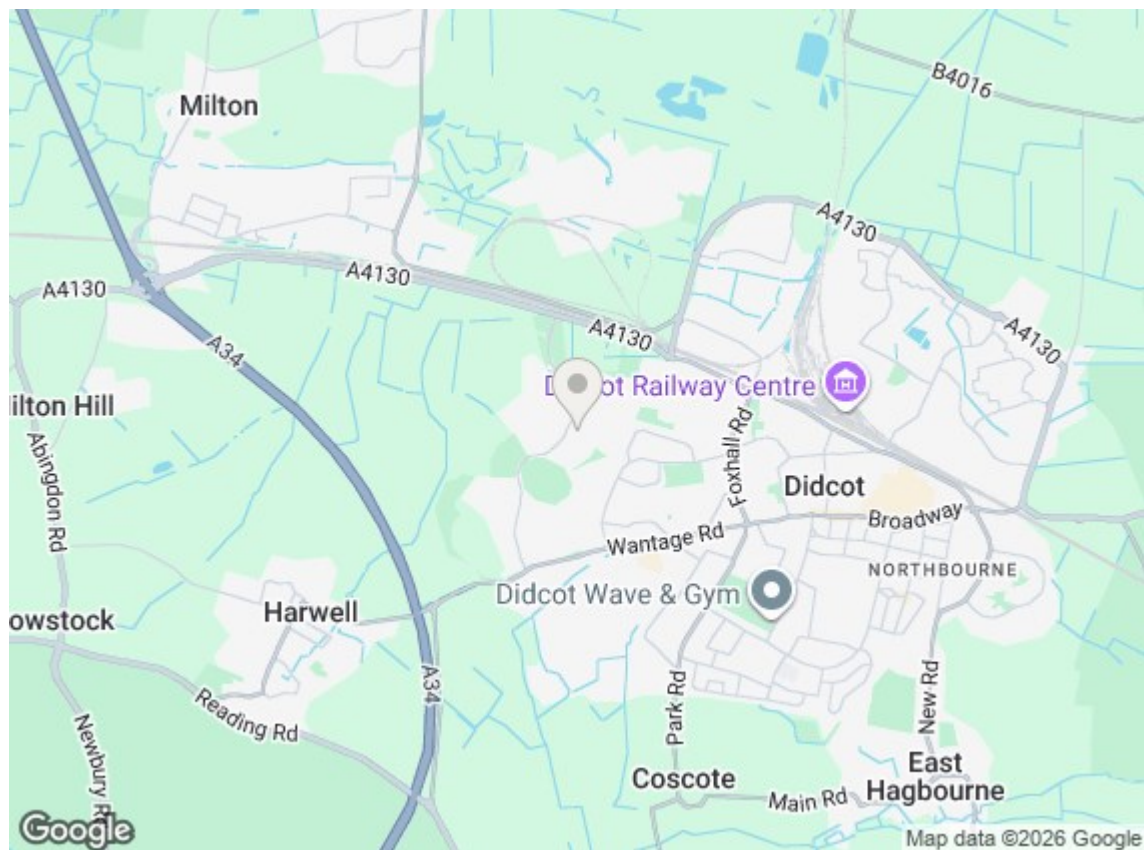


Total Approx. Floor Area 587 Sq.Ft. (54.50 Sq.M.)

All items illustrated on this plan are included in the "Total Approx Floor Area"

Energy Efficiency Rating

	Current	Potential
Very energy efficient - lower running costs		
(92 plus) A		92
(81-91) B		
(69-80) C	76	
(55-68) D		
(39-54) E		
(21-38) F		
(1-20) G		
Not energy efficient - higher running costs		
England & Wales	EU Directive 2002/91/EC	



Directions

Viewings

Viewings by arrangement only. Call 01235 514267 to make an appointment.

Council Tax Band

C