

Property ref: 41803

## Hunsaker, Reading, RG1 7AU

£1,700 PCM

**HASLAM'S**  
Lettings



A well presented 7th floor apartment located in the popular Chatham Place development with spectacular views over the communal gardens. Reading Borough Council tax band D.

Broadband/Mobile Info: Connections available. For an indication of specific speeds and supply of Broadband and Mobile, we advise applicants go to the Ofcom website Broadband and Mobile Coverage Checker.

### Available Now

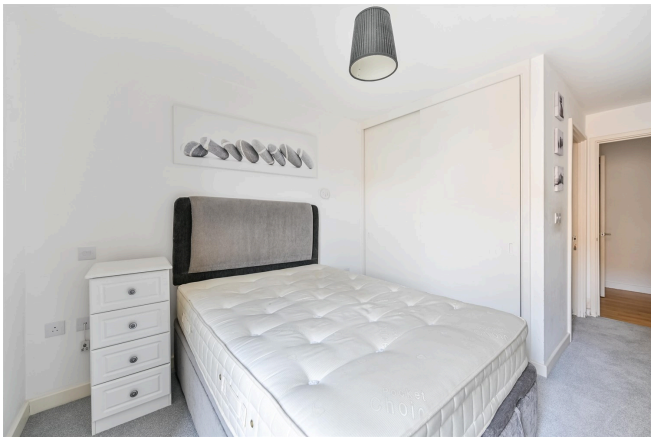
- Two double bedrooms with built in wardrobes; En-suite shower room to master
- Open plan living room/kitchen with wooden flooring
- Kitchen with integrated appliances
- Allocated parking; Gas central heating
- On site concierge; EPC rating B
- Furnished; Managed by LANDLORD

\*Fees For Assured Shorthold Tenancies: when you rent a property from us you will be required to pay a sum equivalent to one weeks' rent for a holding deposit. Upon successful application, this amount will be off set against your first months' rent. You will also be required to pay a security deposit equivalent to 5 weeks' rent which will be held and protected in line with Deposit legislation. For more information about our fees please visit: [www.haslams.net](http://www.haslams.net)  
Fees for all other tenancies (Non Housing Act Tenancies / Company Lets): when you rent a property from us we will charge you a one-off fee per property. This charge is the equivalent of 15 days of the monthly rental charge (+VAT) with a minimum fee of £450 (inc.VAT) up to a maximum of £650 (inc.VAT). Other fees may apply depending on your circumstances.

**0118 960 1055**

**[lettings@haslams.net](mailto:lettings@haslams.net) [www.haslams.net](http://www.haslams.net)**

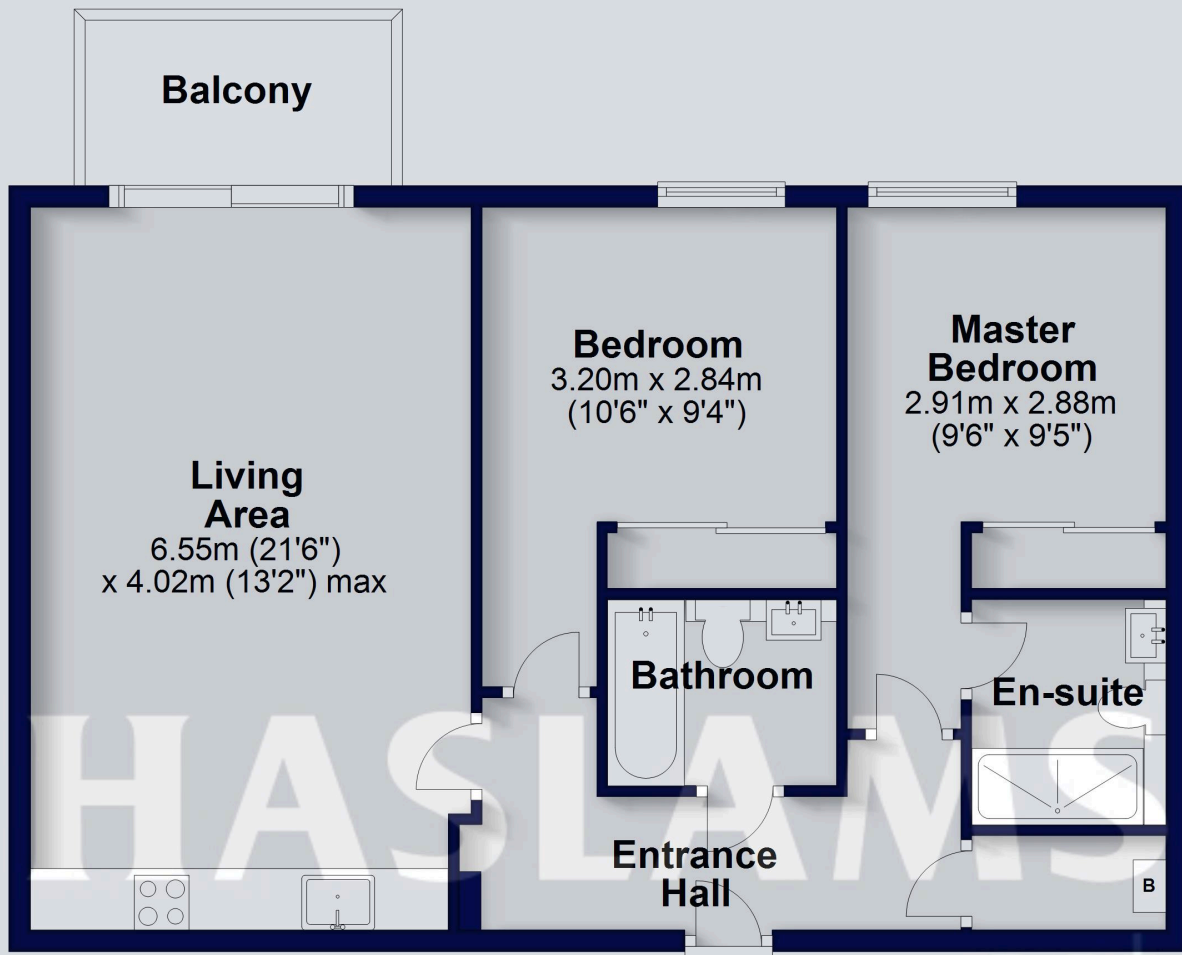
**Haslams Estate Agents Ltd, 159 Friar Street, Reading, Berkshire, RG1 1HE**





## Seventh Floor

Approx. 68.4 sq. metres (736.3 sq. feet)



Total area: approx. 68.4 sq. metres (736.3 sq. feet)

This floorplan is for illustrative purposes only and is not to scale. The total area includes all the areas shown.  
Plan produced using PlanUp.