



Mansfield Road, NW3

£500,000

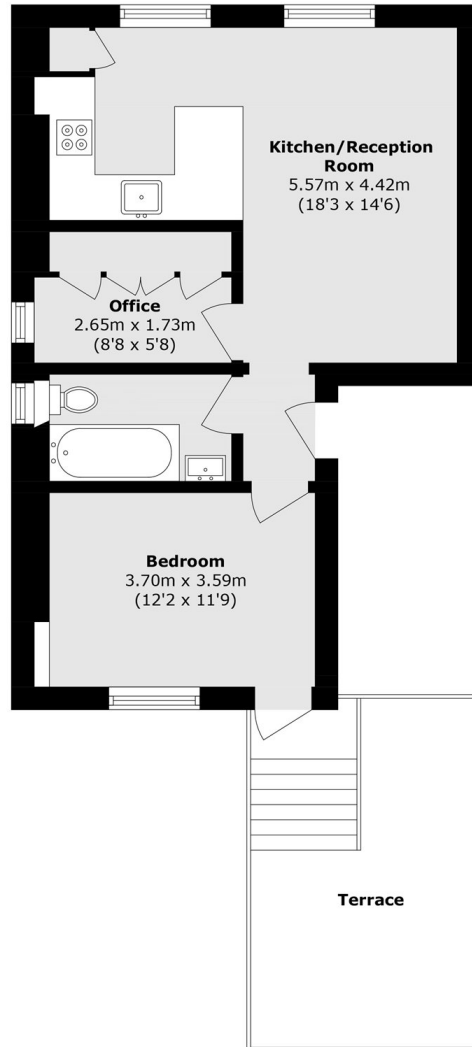
A lovely one bedroom apartment with a versatile second room currently arranged as a home office. The property is in good condition throughout, benefits from a share of freehold, and features an impressive private terrace of approximately 150 sq ft.

Situated in a sought after Hampstead location, the property is moments from the cafés, shops, and restaurants of South End Green. Hampstead Heath is nearby, offering extensive green open space and leisure facilities. Transport links include Hampstead Heath overground and Belsize Park underground station (Northern line).

Features

- Private Terrace
- Share of Freehold
- Good Condition
- One Double Bedroom
- Office Room
- Excellent Location

Mansfield Road, London, NW3



Total area (approx.): 40.5 sq. m (435.9 sq. ft)
Terrance Total (approx.): 13.8 sq. m (148.5 sq. ft)