



**St. Luke's Avenue, SW4**

£650,000

**Dexters**



## St. Luke's Avenue, SW4

A contemporary third-floor apartment set within the award-winning Library Building, offering stylish modern living in a sought-after development. The property features a spacious open-plan reception room with a sleek modern kitchen, two generous double bedrooms, and two bathrooms, including an en-suite to the principal bedroom. The apartment enjoys an excellent sense of privacy, with no directly adjoining walls to neighbouring apartments, creating a notably peaceful living environment. Residents also benefit from a concierge service, step-free access via two passenger lifts and access to two large communal roof terraces, ideal for relaxing or entertaining.

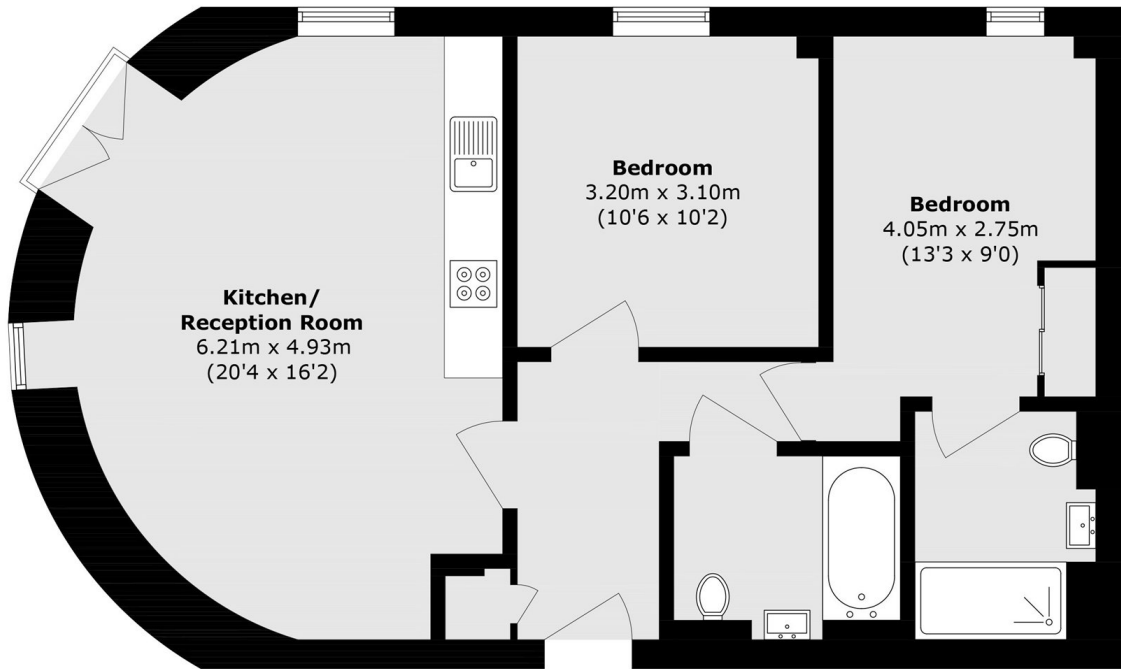
Ideally positioned for the vibrant amenities of Clapham Common and Clapham Old Town, the property is moments from an excellent selection of shops, restaurants, gyms and fitness studios. Clapham Common, Clapham North Underground stations (Northern Line) and Clapham High Street (Overground) are all just a short walk away, providing superb transport links into Central London, the City and Canary Wharf.

### Features

- Modern Apartment
- Open Plan Reception Room
- Two Double Bedrooms
- Two Bathrooms
- Roof Terraces
- Concierge



# St. Luke's Avenue, London, SW4



## Third Floor

Total area (approx.): 66.2 sq. m (712.6 sq. ft)