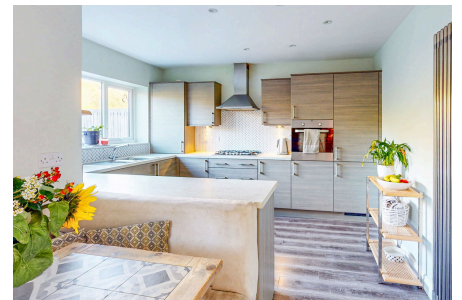
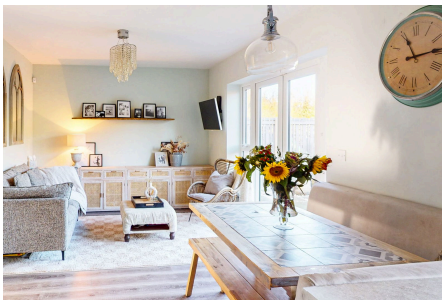


## Chesterfield Drive, Marton-in-Cleveland, Middlesbrough, TS8 9ZE

Guide Price £300,000

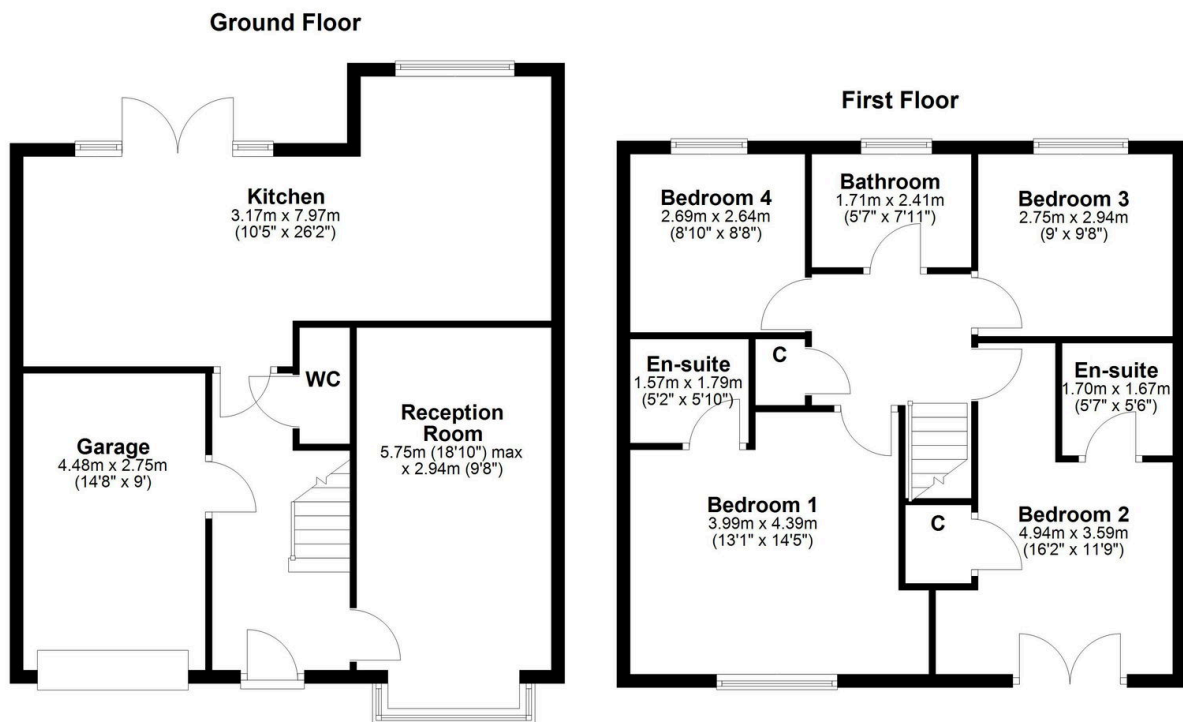
🛏️ 4 🚗 3 🛋️ 2



**The Yorkshire Property Agency** is delighted to introduce this fabulous four-bedroom family home located on a popular street in Marton-in-Cleveland, TS8. Boasting a stylish interior and a substantial plot, this property is unlikely to remain on the market for a long time. Do call to arrange a viewing ASAP.

## Key Features

- Four-bedroom family home
- Chain-free sale
- Excellent location close to local amenities
- Garage
- Excellent EPC rating
- Contemporary interior
- Three bathroom
- Off-street parking
- Substantial garden
- Council tax band D



This floorplan is for illustrative purposes only and is not 100% to scale. Measurements of Rooms, Windows, Doors and any other items are an approximate and no responsibility is taken for any error, misstatement or omission, items such as bathroom suites, or kitchens are representatives only any may not look like the real item. Made by Daniel Kibling Photography