

## Exige Way, Wymondham, Norfolk. NR18 9ND

Offers In Region Of £260,000

3 2 1



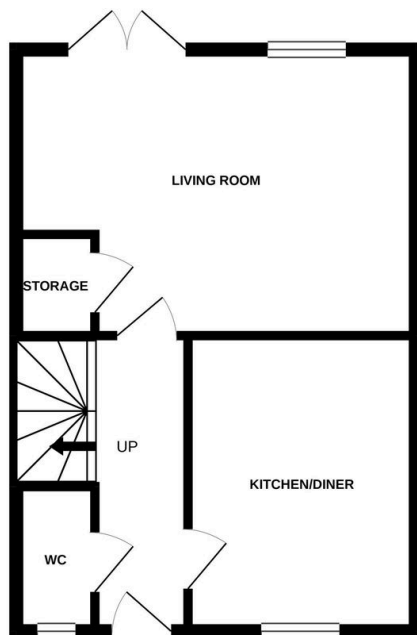
Moneyproperties are delighted to present this deceptively spacious three-bedroom semi-detached home, complete with garage and off-road parking for two vehicles. Offering approximately 850 sq ft of well-planned living accommodation, the property enjoys an elevated position providing pleasant views to both the front and rear aspects.

**Tenure: Freehold EPC: C Council Tax: C**

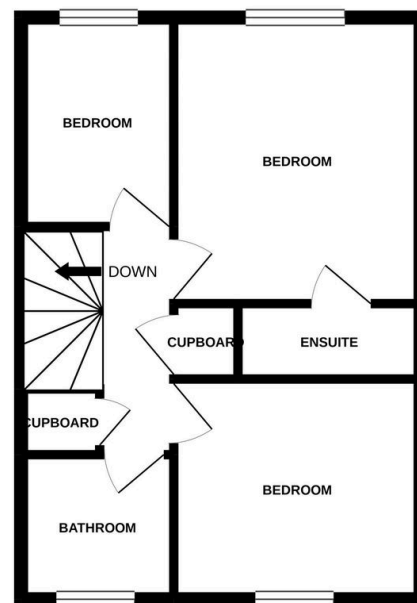
## Key Features

- Spacious three-bedroom semi-detached home, complete with garage and parking for 2/3 cars
- The property enjoys an elevated position providing pleasant views to both the front and rear aspects
- Three well-proportioned bedrooms and two bathrooms, including an en-suite to the main bedroom
- The town centre is just a five-minute walk away and provides a wide range of amenities
- Offered with no onward chain, this property allows for a smooth and speedy transaction
- Offering approximately 850 sq ft of well-planned living accommodation
- Patio doors opening onto a fully enclosed rear garden, ideal for entertaining and family living
- Close to local Co-op store and the town's railway station, offering regular services to Norwich and Cambridge
- Supermarkets, regular bus services and highly regarded schools with GOOD and OUTSTANDING ofsted
- See our full online listing for further details including flood risk, broadband speed and other material information

GROUND FLOOR



1ST FLOOR



Whilst every attempt has been made to ensure the accuracy of the floorplan contained here, measurements of doors, windows, rooms and any other items are approximate and no responsibility is taken for any error, omission or mis-statement. This plan is for illustrative purposes only and should be used as such by any prospective purchaser. The services, systems and appliances shown have not been tested and no guarantee as to their operability or efficiency can be given.  
Made with Metropix ©2021