



## Upper Parliament Street, Liverpool

£550 PCM

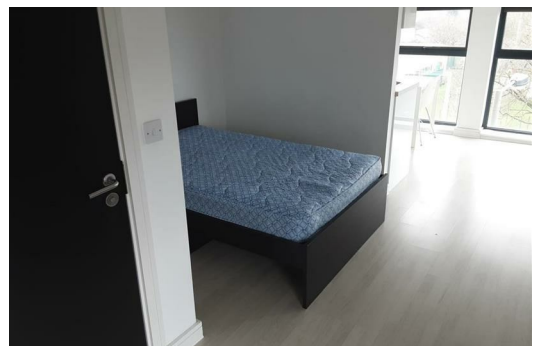
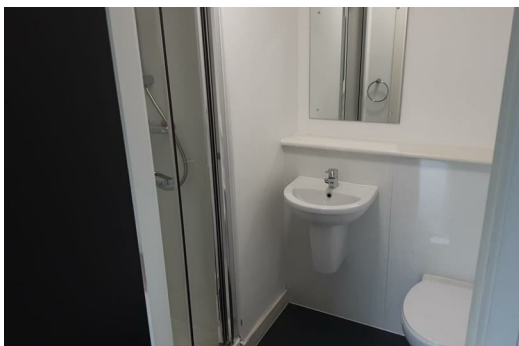
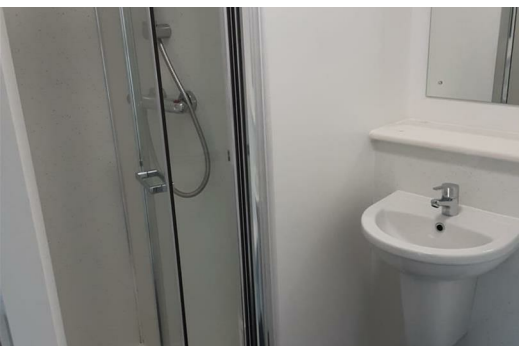
Ideal for students and young professionals, this fully furnished one-bedroom apartment has everything you need and is just a stone's throw from the University of Liverpool. Situated just outside the Georgian Quarter, and a few minutes outside of Toxteth, you have both the old historical and new up-and-coming areas to explore. With buses on your doorstep, it's a 15-minute journey into town, where you can no doubt make the most of Liverpool's fantastic shopping, music scene, and nightlife.

The apartment is generously proportioned with a double bed, bathroom with shower, desk perfect for studying, and a stylish compact kitchen complete with a dining space that can easily seat guests. With large floor to ceiling windows facing the entrance, the kitchen, and your desk, you have ample light where you need it the most. The bed, nicely secluded in the centre of the apartment with plenty of space either side, is comfortably tucked away allowing you to sleep in peace.

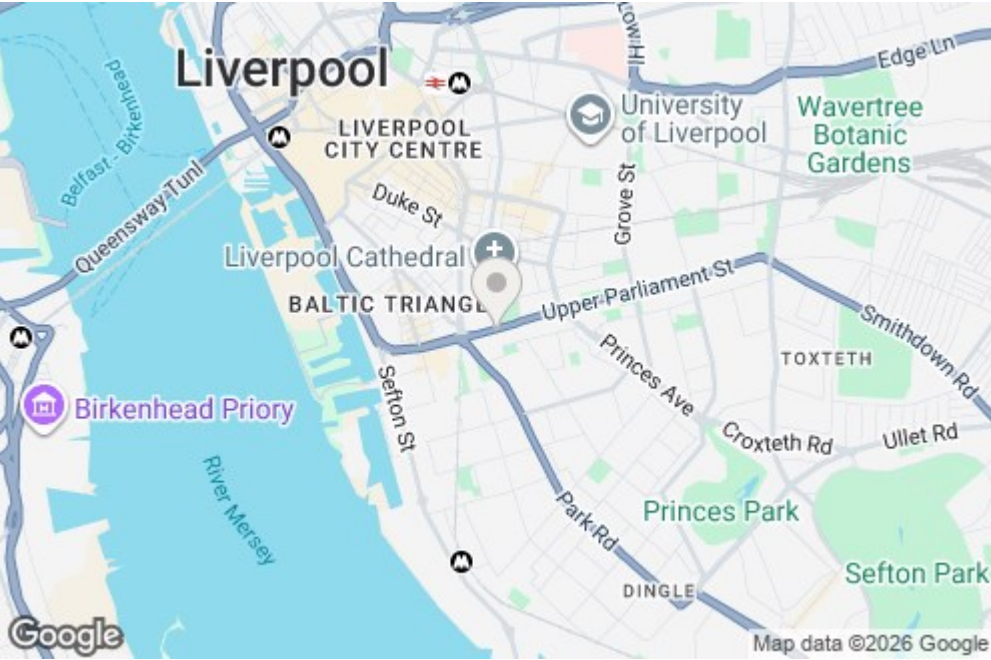
With its short distance to the university, neighbouring bus stops, and Edge Hill train station, you'll be well connected and ready to make the most of living in Liverpool. If you're interested in having a closer look, or have any questions, do get in touch.

Bills not included

\*Available 6th February 2026\* 12 month tenancy. Deposit £635. Council Tax Band A.



10 Parliament Place 248 Upper Parliament Street, Liverpool, Merseyside, L8 7QE



Energy Efficiency Rating			Environmental Impact (CO <sub>2</sub> ) Rating		
Very energy efficient - lower running costs	Good	Poor	Very environmentally friendly - lower CO <sub>2</sub> emissions	Good	Poor
92-100 A	90	90	10-15 A		
82-91 B			16-20 B		
72-81 C			21-25 C		
62-71 D			26-30 D		
52-61 E			31-35 E		
42-51 F			36-40 F		
32-41 G			41-45 G		
Very energy efficient - higher running costs			Very environmentally friendly - higher CO <sub>2</sub> emissions		