



Haverstock Hill NW3

Parkheath
Sold on Service





Haverstock Hill, NW3 Offers In Excess Of £850,000 Leasehold

- Fantastic, extremely spacious 3 double bedroom, 2 bathroom apartment
- Very bright 28ft dual aspect reception with fireplace
- Stunning 20ft kitchen/diner with central island
- Wood flooring and double glazing
- 1170 sq ft approx with a lift on the 2nd floor
- 3 spacious bedrooms plus bathroom and shower room .
- Traditional purpose built block
- 215 years from 1977
- Set in the heart of Belsize Park, moments from shopping, restaurants and transport connections
- Moments from shopping, restaurants and transport connections

Belsize Park/Hampstead
208 Haverstock Hill
NW3 2AG
Sales 020 7431 1234
Lettings 020 7431 3104
nw3@parkheath.com

South/West Hampstead
192 West End Lane
NW6 1SG
Sales & Lettings
Tel 020 7794 7111
192@parkheath.com

Kensal Rise
54-56 Chamberlayne Rd
NW10 3JH
Tel 020 8960 4845
kensal@parkheath.com

Property Management
192 West End Lane
NW6 1SG
020 7433 6174
pm@parkheath.com

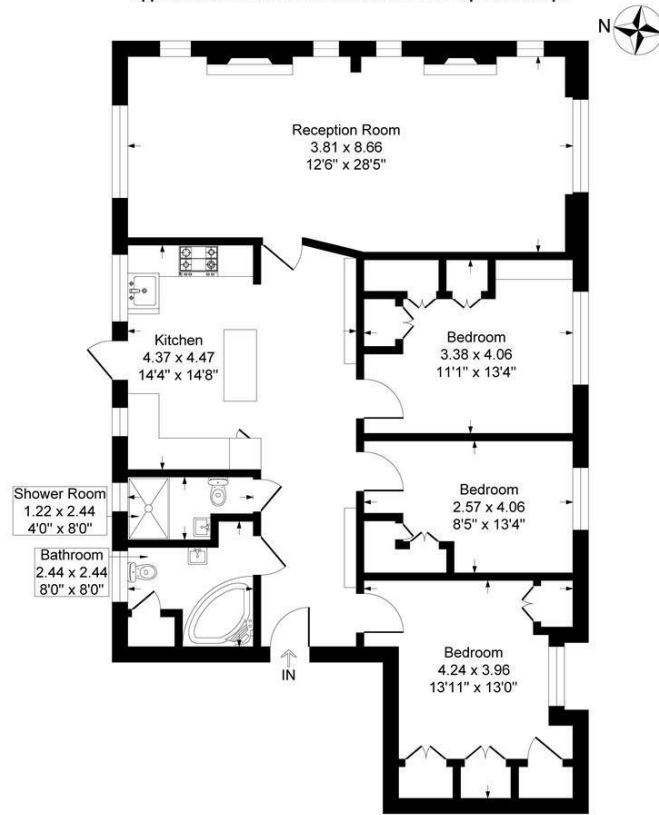
Parkheath
Sold on Service

Camden Tax band F

www.parkheath.com

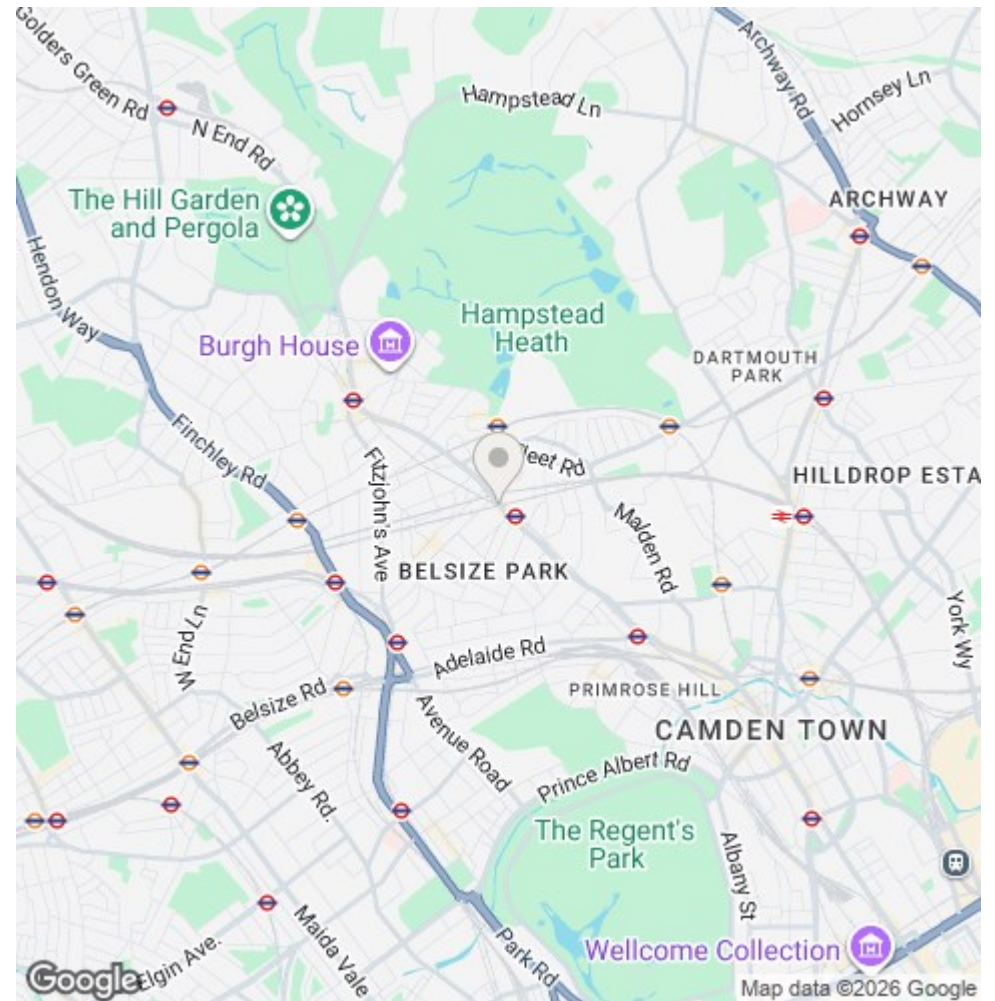
Allingham Court, Haverstock Hill, London NW3

Approximate Gross Internal Floor Area = 108.7 sq m / 1170 sq ft



Second Floor

Illustration for identification purposes only, measurements are approximate, not to scale.



The particulars do not constitute part of an offer or contract. The particulars, including text, photographs and plans, are for the guidance only of prospective purchasers/tenants and must not be relied upon as statements of fact. The descriptions provided therein represent the opinion of the author and whilst given in good faith should not be construed as statements of fact. Nothing in these particulars shall be deemed a statement that the property is in good condition or otherwise or that any services or facilities are in good working order. All measurements are approximate