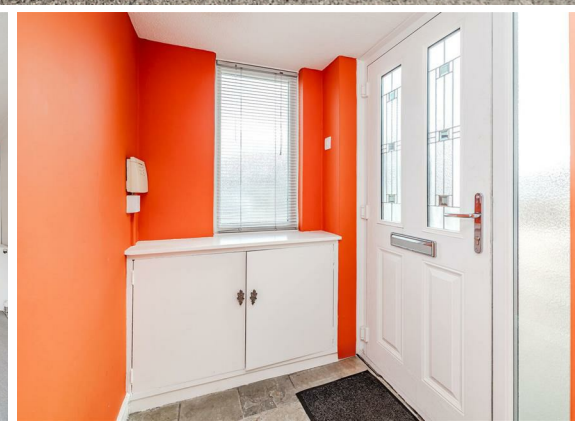


5 Kent Court
Kingston Park
Newcastle Upon Tyne
NE3 2XH

Price Guide
£180,000



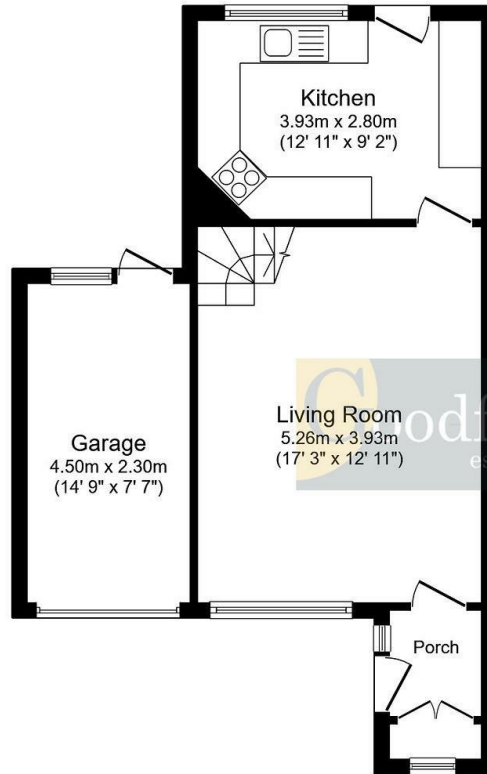
5 Kent Court
Kingston Park
Newcastle Upon Tyne
NE3 2XH

- Two Bed Semi Detached House
- Open Plan Lounge
- Shower Room/WC
- Front & Rear Gardens
- Ideal First Purchase

- Lovely Location in Sought after 'Court'
- Breakfasting Kitchen
- Attached Garage
- Gas CH & SUDG
- Well Placed for Amenities and Metro

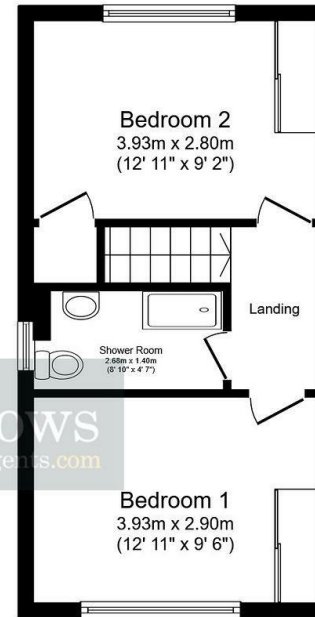






Ground Floor

Floor area 46.5 sq.m. (500 sq.ft.)



First Floor

Floor area 32.8 sq.m. (353 sq.ft.)

Total floor area: 79.3 sq.m. (853 sq.ft.)

This floor plan is for illustrative purposes only. It is not drawn to scale. Any measurements, floor areas (including any total floor area), openings and orientations are approximate. No details are guaranteed, they cannot be relied upon for any purpose and do not form any part of any agreement. No liability is taken for any error, omission or misstatement. A party must rely upon its own inspection(s).



EPC Rating:
Council Tax Band: B

Whilst every care has been taken to prepare these particulars, they are for guidance purposes only. All measurements are approximate and whilst every care has been taken to ensure their accuracy, they should not be relied upon and potential buyers/tenants are advised to recheck the measurements. The agent has not tested any equipment, services, fixtures or fittings and makes no representation regarding their condition.

CONTACT
 2 Middleton South, Newcastle Great Park,
 Newcastle upon Tyne, NE13 9BJ
 E: greatpark@goodfellowsestateagents.com
 T: 0191 2848100

