



STAINES ROAD, TW3

£1,800 pcm

This expansive 887 sq/ft third-floor apartment features hardwood flooring, a designer kitchen, and a spacious open-plan living area. Enjoy a private balcony, high-end finishes, and the convenience of included parking.

- Spacious 887 SQFT
- Private Outdoor Balcony
- Allocated Parking Included
- Secure Fob Entry
- Designer Integrated Kitchen
- Hardwood Flooring Throughout

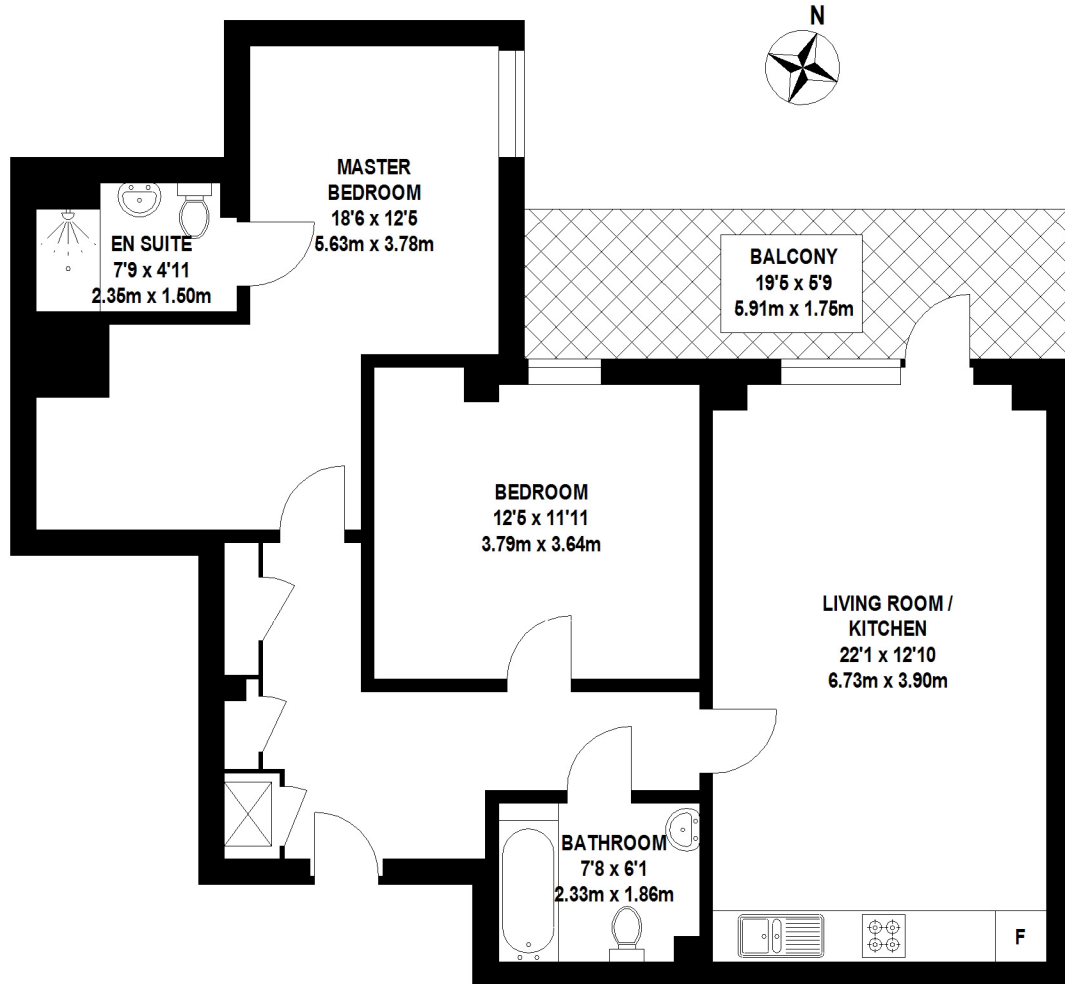


ABOUT THE HOME

Located in Bellvue Court, this property is moments from Hounslow Central Station. Benefit from rapid Piccadilly Line access to Heathrow and Central London, with effortless connections to the M4 and M25.







TOTAL APPROX. FLOOR AREA 887 SQ.FT. (82.4 SQ.M)

Whilst every attempt has been made to ensure the accuracy of the floor plan contained here, measurements of door, windows, rooms and any other items are approximate and no responsibility is taken for any error, omission, or mis-statement. This plan is for illustrative purposes only and should be used as such by any prospective purchaser. The services, systems and appliances shown have not been tested and no guarantee as to their operability or efficiency can be given

© 2022 (ID894281)

LiFE RESIDENTIAL

203 Trentham Court, Victoria
Road, London, W3 6BT
Sales: 020 3668 1112
Lettings: 020 3668 1111

Energy Rating: B. We aim to make our particulars both accurate and reliable. However they are not guaranteed; nor do they form part of an offer or contract. If you require clarification on any points then please contact us, especially if you're traveling some distance to view. Please note that appliances and heating systems have not been tested and therefore no warranties can be given as to their good working order.