



Jordan fishwick

ALTRINCHAM
Brown Street



Brown Street, Altrincham, WA14 2EU

Asking Price £172,500



The Property

Occupying one of the finest positions within this highly regarded retirement development, this immaculate first floor apartment is among the largest properties on site, extending to approximately 583 sq ft.

A south-facing aspect floods the home with natural light and affords pleasant views over the beautifully maintained communal gardens — a rare and much-appreciated feature.

The accommodation is both practical and well-proportioned, comprising a generous living/dining room with an elegant bay window, a fitted kitchen, two bedrooms and a contemporary shower room. Presented in truly move-in condition throughout, this is an ideal choice for those seeking a retirement home without the need for any work or updating.

Rostherne Court enjoys an enviable position, within easy walking distance of both Hale Village and Altrincham Town Centre. Residents benefit from the reassurance of an on-site house manager, alongside an excellent range of communal facilities including a residents' lounge, guest accommodation and delightful landscaped gardens.

Directions

WA14 2EU



- No onward chain
- First floor two bedroom apartment
- Over 55's retirement apartment
- Lounge diner
- Lift access
- Modern throughout
- Walking distance to Hale village and Altrincham town centre
- Leasehold - 87 years remaining
- Residents lounge
- On site manager

Postcode - WA14 2EU

EPC Rating - E

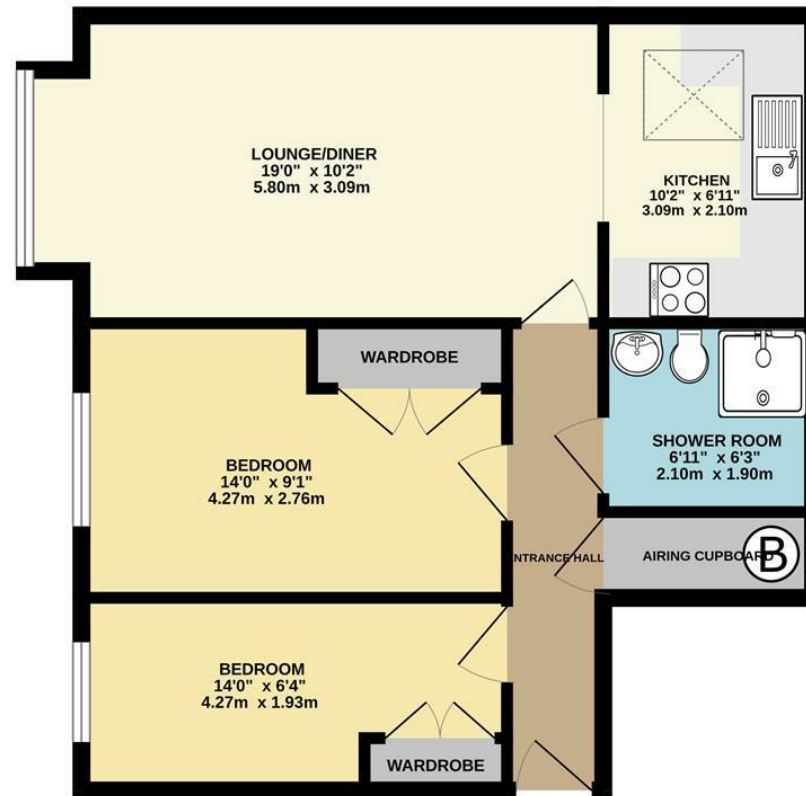
Floor Area - 583.00 sq ft

Local Authority - Trafford

Council Tax - C



GROUND FLOOR
583 sq.ft. (54.2 sq.m.) approx.



TOTAL FLOOR AREA : 583 sq.ft. (54.2 sq.m.) approx.

Whilst every attempt has been made to ensure the accuracy of the floorplan contained here, measurements of doors, windows, rooms and any other items are approximate and no responsibility is taken for any error, omission or mis-statement. This plan is for illustrative purposes only and should be used as such by any prospective purchaser. The services, systems and appliances shown have not been tested and no guarantee as to their operability or efficiency can be given.
Made with Metropix ©2026



These particulars are believed to be accurate but they are not guaranteed and do not form a contract. Neither Jordan Fishwick nor the vendor or lessor accept any responsibility in respect of these particulars, which are not intended to be statements or representations of fact and any intending purchaser or lessee must satisfy himself by inspection or otherwise as to the correctness of each of the statements contained in these particulars. Any floorplans on this brochure are for illustrative purposes only and are not necessarily to scale.

Offices at: Chorlton, Didsbury, Disley, Hale, Glossop, Macclesfield, Manchester Deansgate, Manchester Whitworth Street, New Mills, Sale, Wilmslow and Withington

0161 929 9797

hale@jordanfishwick.co.uk
www.jordanfishwick.co.uk