



# Ecclesbourne Road

London, N1

£3,250 per month  
(£750 per week)

SHORT LET - An outstanding apartment set in this charming gated Victorian school conversion set within the East Canonbury conservation area.

CHESTERTONS



# Ecclesbourne Road

London, N1

- SHORT LET (Utility bills included)
- Outstanding apartment
- Set in this charming gated Victorian school conversion
- East Canonbury conservation area.
- Excellent access to the transport connections at Essex Road station, with trains to the City and, of course, Angel Underground



## SHORT LET

An outstanding apartment set in this charming gated Victorian school conversion set within the East Canonbury conservation area.

Accommodation comprises a stunning reception room with a beautiful vaulted ceiling extending to over 4.2m in height giving a volumous feel to a very grand, impressive room. The reception is open to the modern, fully fitted kitchen creating an amazing social space for guests. There is a modern bathroom and further storage in the hallway.

**Minimum Term:** 2 months  
**Deposit Required:** £3,750.00  
**Local Authority:** Islington  
**Council Tax Band:** D  
**EPC Rating:** C  
**Furnished, Unfurnished**

Energy Efficiency Rating		Current	Potential
Very energy efficient - lower running costs			
(92-100)	<b>A</b>		
(81-91)	<b>B</b>		
(69-80)	<b>C</b>	75	78
(55-68)	<b>D</b>		
(39-54)	<b>E</b>		
(21-38)	<b>F</b>		
(1-20)	<b>G</b>		
Not energy efficient - higher running costs			
England, Scotland & Wales		EU Directive 2002/91/EC	

### Chestertons Islington Lettings

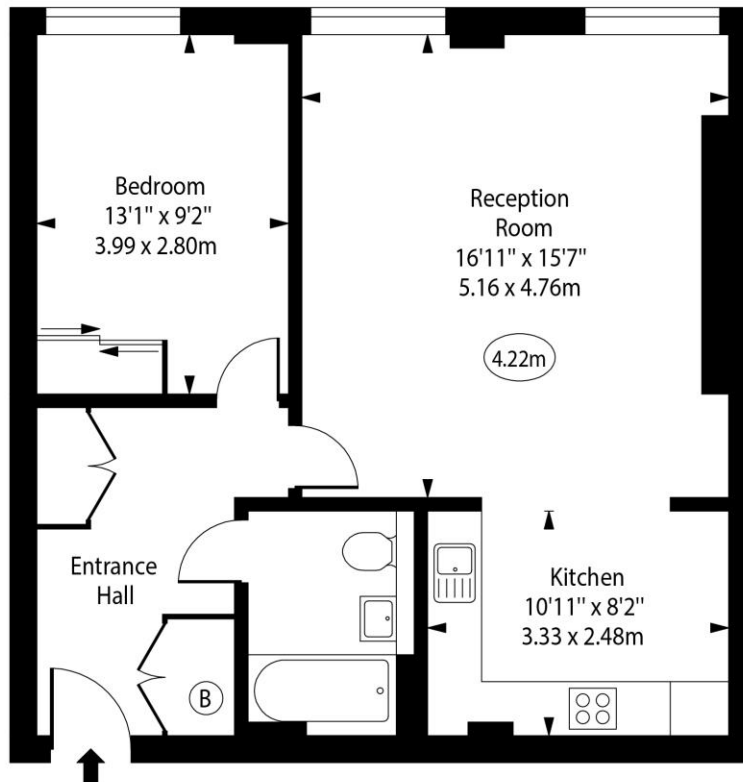
327-329 Upper Street  
 London  
 N1 2XQ  
 islingtonlettingsusers@chestertons.co.uk  
 02072264221  
 chestertons.co.uk

Additional tenant charges apply (fees apply to non-AST tenancies only)  
 Tenancy Agreement Fee: £300  
 References per Tenant/Guarantor: £60  
 Inventory check (approx. £100 – £250 inc. VAT)  
 chestertons.co.uk/property-to-rent/applicable-fees

Ecclesbourne Apartments,  
Ecclesbourne Road,  
Islington, N1



○ - Ceiling Height



Ground Floor

Approx Gross Internal Area      647 Sq Ft - 60.11 Sq M

Every attempt has been made to ensure the accuracy of the floor plan shown. However, all measurements, fixtures, fittings, and data shown are approximate interpretations and for illustrative purposes only. Measured according to the RICS. Not To Scale.

[www.goldlens.co.uk](http://www.goldlens.co.uk)

Ref. No. 031319D

