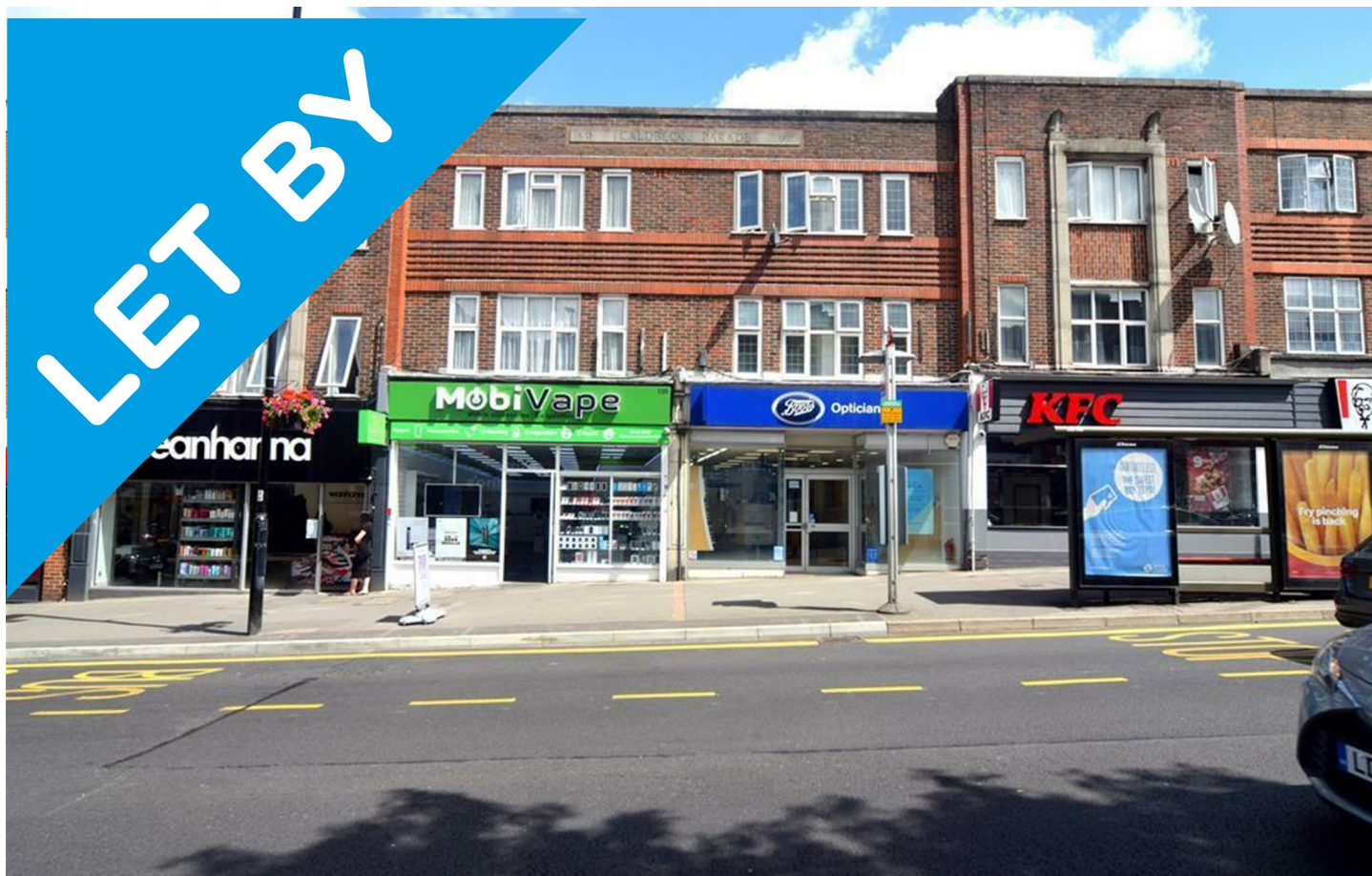


HUNTERS[®]

HERE TO GET *you* THERE



Central Road, Worcester Park, KT4 8HT

£1,450 Per Calendar Month

Council Tax: C



A spacious newly renovated two bedroom unfurnished flat situated on Worcester Park high streets. The property comprises of a modern kitchen and bathroom as well as two double bedrooms. Close to local amenities and excellent transport links. Viewings are highly recommended and available immediately.

- Two Bed Apartment
- First Floor
- Available from 27th Of November
- Worcester Park High Street
- Viewings are Highly Recommended
- Open Plan Reception with Kitchen Diner
- Spacious
- Excellent Transport Links
- Unfurnished

