



Crowder Street, E1

£275,000

 1  1  1  B

- 520 sq.ft.
- Private East Facing Balcony
- Dual Aspect Reception

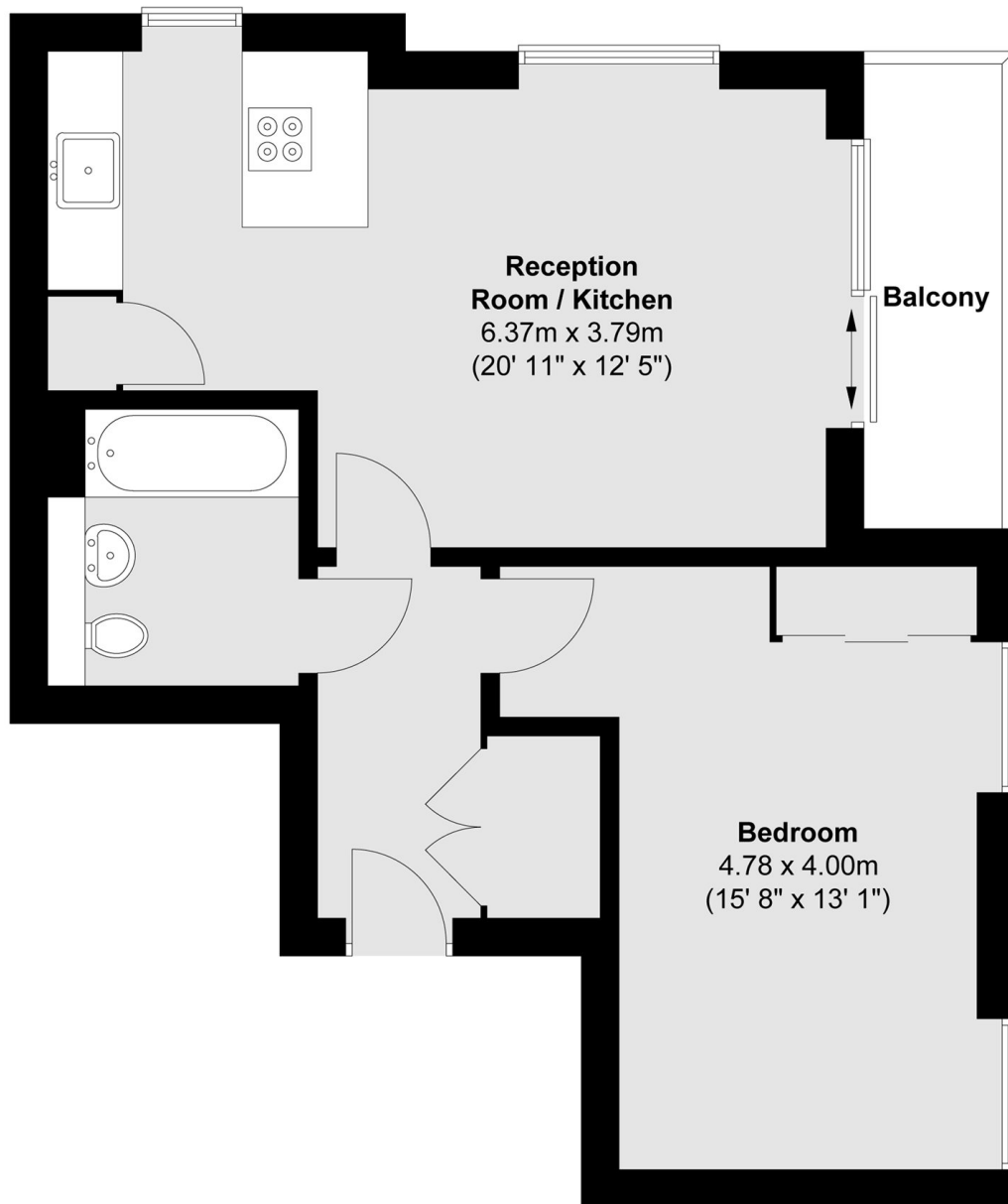
- Chain Free
- Bike Storage
- Approx 0.3 Miles from Shadwell DLR/Overground



Offered to the market on a chain free basis is this larger than average one bedroom home in the sought after development, Garamond Building. Features include an open planned living space with dual aspect windows letting in lots of natural light, a private balcony and bike storage.

Garamond Building is just 0.3 miles from Shadwell station, or 0.7 miles from Tower Hill Station, both offering great links around the City.





Total area (approx.) : 48.3 sq. m (520 sq. ft)
Total balcony area (approx.) : 3.8 sq. m (41 sq. ft)

35A Wapping High Street,
London, E1W 1NR
020 7665 5589
ea2group.com