



Woodville Gardens, W5

£625,000

A well presented, two double bedroom, two bathroom, ground floor apartment set within a detached Victorian house. There is direct access to the communal gardens with a 100' mature south facing garden.

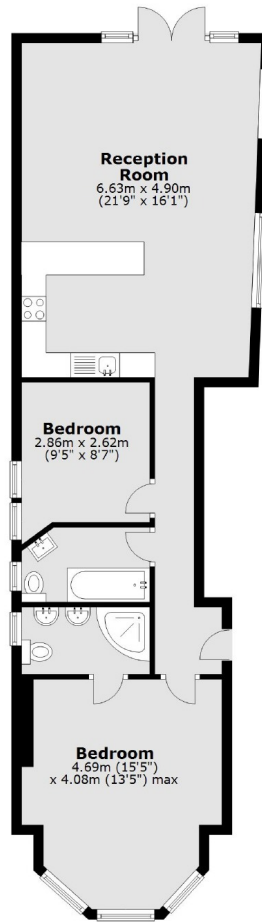
Directly opposite Ealing Cricket Club and within a quarter of a mile from central Ealing Broadway underground station with all the bars, shops, restaurants and transport connections.

Features

- Two Double Bedrooms
- Two Bathrooms
- Ground Floor
- Off Street Parking
- Central Location
- Chain Free

Woodville Gardens, London, W5

Ground Floor



Total area: approx. 71.6 sq. metres (771.1 sq. feet)