



29 Chadwick Crescent

Leighton Buzzard, Bedfordshire, LU7 3QS

£1,595 PCM



3



2



1



B



WATSONS

LETTING SINCE 1961

## 29 Chadwick Crescent, Leighton Buzzard, Bedfordshire, LU7 3QS

Watsons are delighted to offer for let this three bedroom modern semi-detached house situated on the Clipstone Park development on the outskirts of Leighton Buzzard. The accommodation comprises: Entrance hallway, cloakroom / WC, lounge, kitchen / diner, stairs to first floor, bedroom one with built-in wardrobes and en-suite shower room, bedroom two with built-in wardrobes, bedroom three, family bathroom, generous rear garden, and driveway parking for two cars. The property is offered Unfurnished, and is available early April.



### Entrance Hallway

### Cloakroom / WC

### Lounge

15'0 (max) x 11'10 (max) (4.57m (max) x 3.61m (max))

### Kitchen / Diner

15'6 (max) x 10'10 (max) (4.72m (max) x 3.30m (max))

### Stairs to First Floor

### Bedroom One

10'8 (max) x 7'10 (3.25m (max) x 2.39m)

### En-Suite Shower Room

### Bedroom Two

10'2 x 8'0 (3.10m x 2.44m)

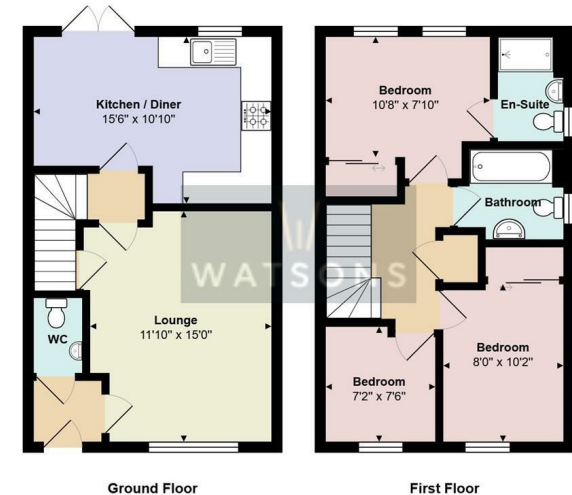
### Bedroom Three

7'6 (max) x 7'2 (max) (2.29m (max) x 2.18m (max))

### Family Bathroom

### Rear Garden

### Driveway



Ground Floor

First Floor

Total Area: 816 ft<sup>2</sup>

All measurements are approximate and for display purposes only

Measurements and floor plans are approximate and for guidance only. Any prospective Tenant should check all measurements. Floor plan coverings and fitments are for example only and may not represent the true finish of the property.

17 - 21 Ropa Court, Leighton Buzzard, Bedfordshire, LU7 1DU  
Tel: 01525 378309 Email: [info@watsonslb.co.uk](mailto:info@watsonslb.co.uk) [www.watsonslb.co.uk](http://www.watsonslb.co.uk)