



## Surrey Quays Road, SE16

### £500,000

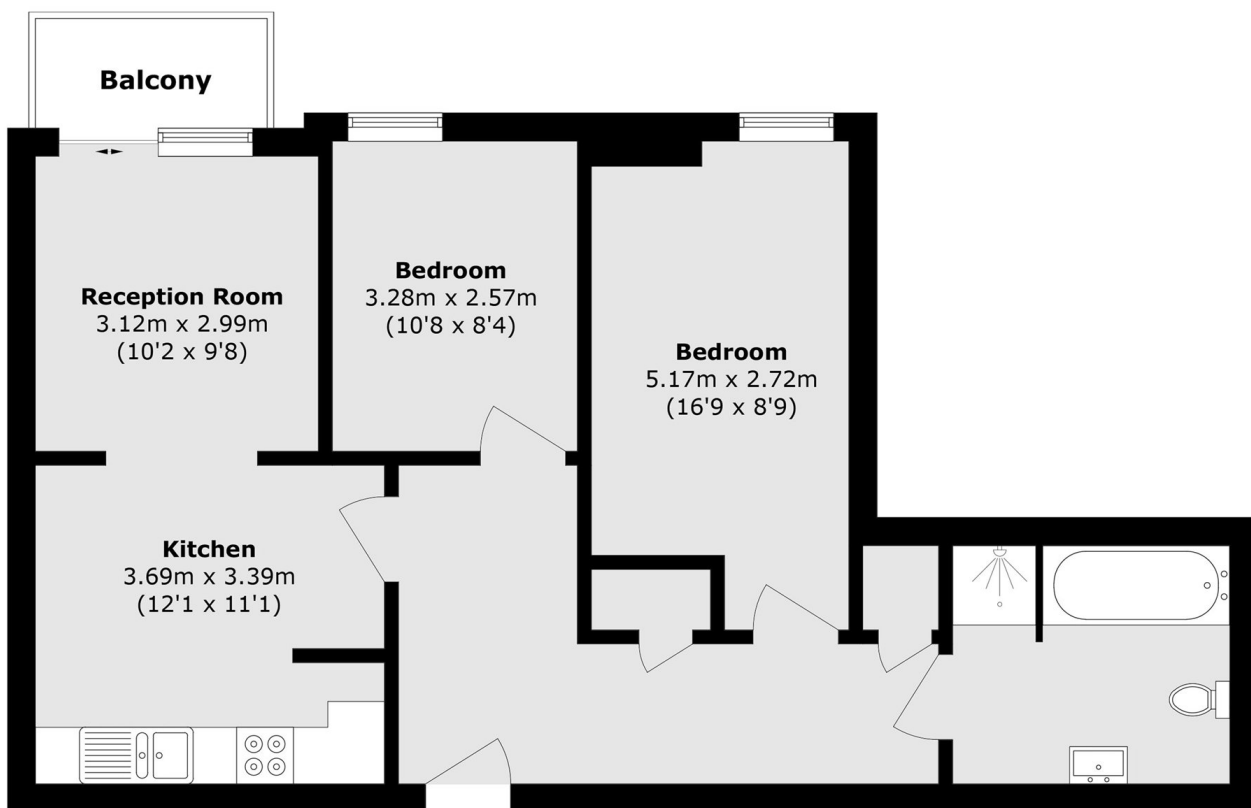
Situated in this sought after development, this two double bedroom flat is immaculately presented and has a large open kitchen/ living area, private balcony and modern bathroom. This also comes complete with concierge, gym facilities and an allocated parking space.

Montreal House is enviably located 50 meters from Canada Water station and is surrounded by shops, cafés, delis and restaurants. Close to the new leisure centre, local library, and green spaces of Southwark Park.

### Features

- Two Double Bedrooms
- Private Balcony
- Allocated Underground Parking
- Residents Gym
- 24-hour Concierge
- Transport Links

# Surrey Quays Road, London, SE16



Total area (approx.): 68.1 sq. m (733.0 sq. ft)

Balcony area (approx.): 2.8 sq. m (30.1 sq. ft)