



Cadogan Terrace, E9

£650,000

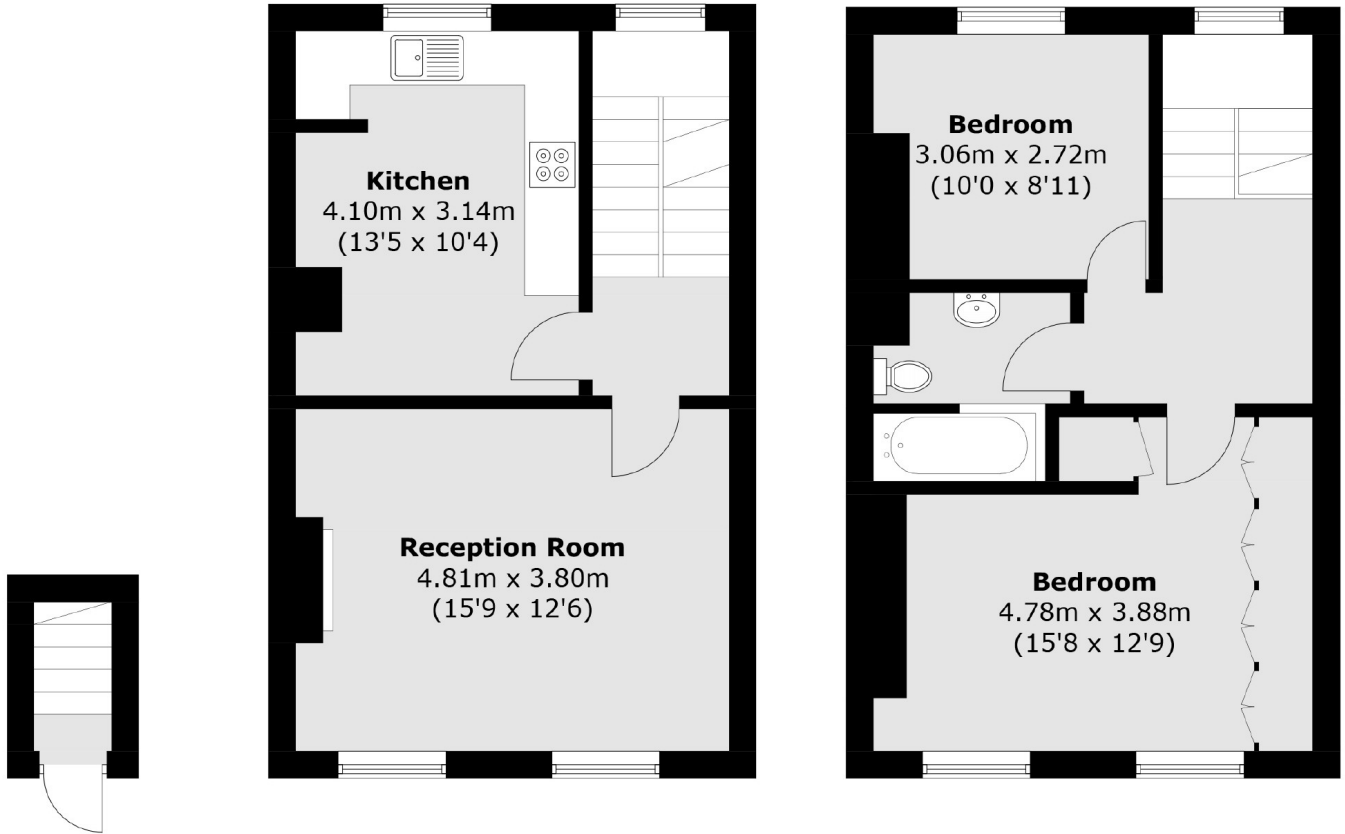
A two double bedroom Victorian, Share of Freehold maisonette overlooking Victoria Park. This property measures in excess of 847 square feet and maintains much of its period charm throughout. There are high ceilings, sash windows, separate eat-in kitchen and one centralised Bathroom. Chain Free

Situated opposite Victoria Park and close to the local amenities that Victoria Park Village has to offer. Queen Elizabeth Olympic Park is also a short walk away with its legacy facilities as well as Hackney Wick station being less than a mile away.

Features

Two Double Bedrooms
Over 847 sqft
Victorian
Maisonette
Opposite Victoria Park
Chain Free

Cadogan Terrace,
London, E9



Ground Floor

First Floor

Second Floor

Total area (approx.): 78.7 sq. m (847.0 sq. ft)