



MARLBOROUGH ROAD, W4

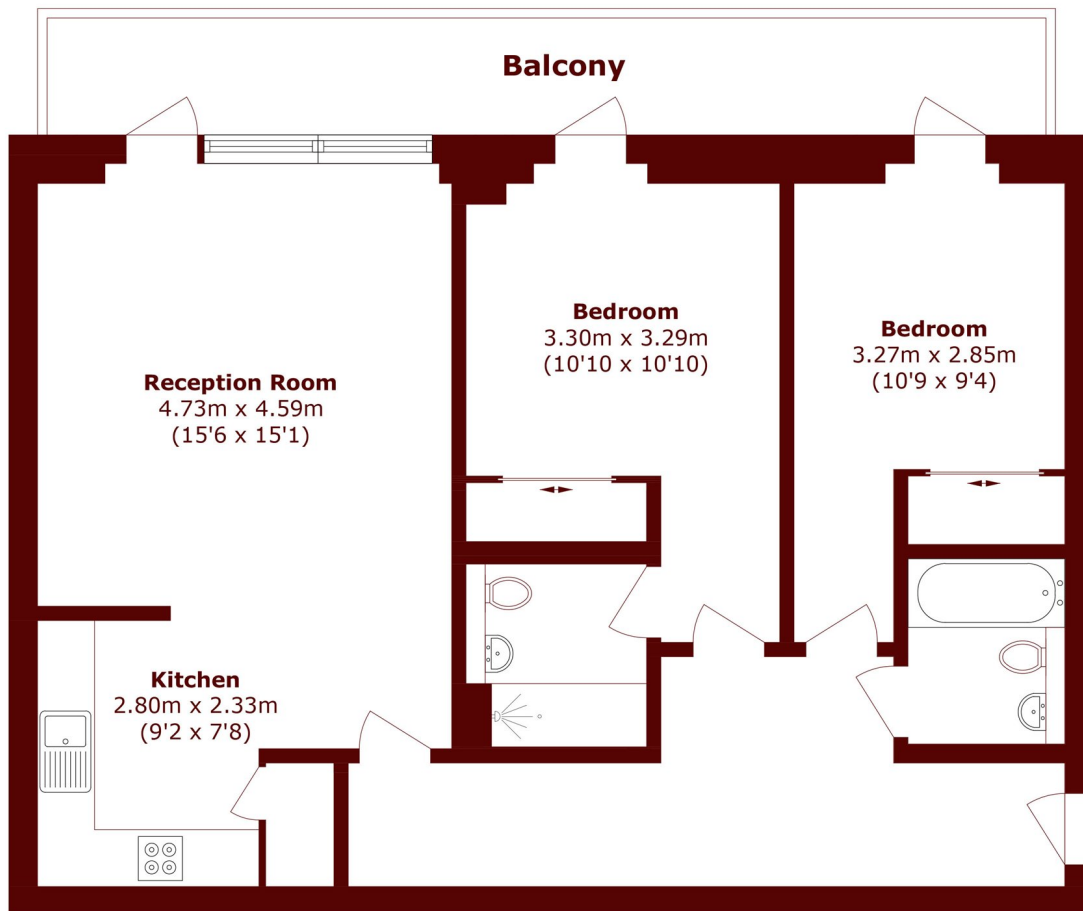
£750,000

Built in 2011 and situated on the second floor of this sought-after residential development. This two-bedroom, two-bathroom apartment comes with lift access, a long lease and a private balcony.

Two bedroom
Two bathroom
Private balcony

Allocated parking
Lift access
Energy rating: c

STEP INSIDE MARLBOROUGH ROAD



Total area (approx.): 81.2 sq. m (874.0 sq. ft)

Balcony area (approx.): 12.9 sq. m (138.8 sq. ft)

Chiswick
020 8994 2556

Energy Rating: C We aim to make our particulars both accurate and reliable. However, they are not guaranteed; nor do they form part of an offer or contract. If you require clarification on any points then please contact us, especially if you're traveling some distance to view. Please note that appliances and heating systems have not been tested and therefore no warranties can be given as to their good working order

**MARSH &
PARSONS**