



## NEVADA STREET, SE10

£650,000

Duplex conversion apartment  
Late 18th century period  
Two bedrooms  
Private courtyard garden  
Moments from Greenwich park  
Energy rating: d

@marshandparsons  
marshandparsons.co.uk

MARSH &  
PARSONS



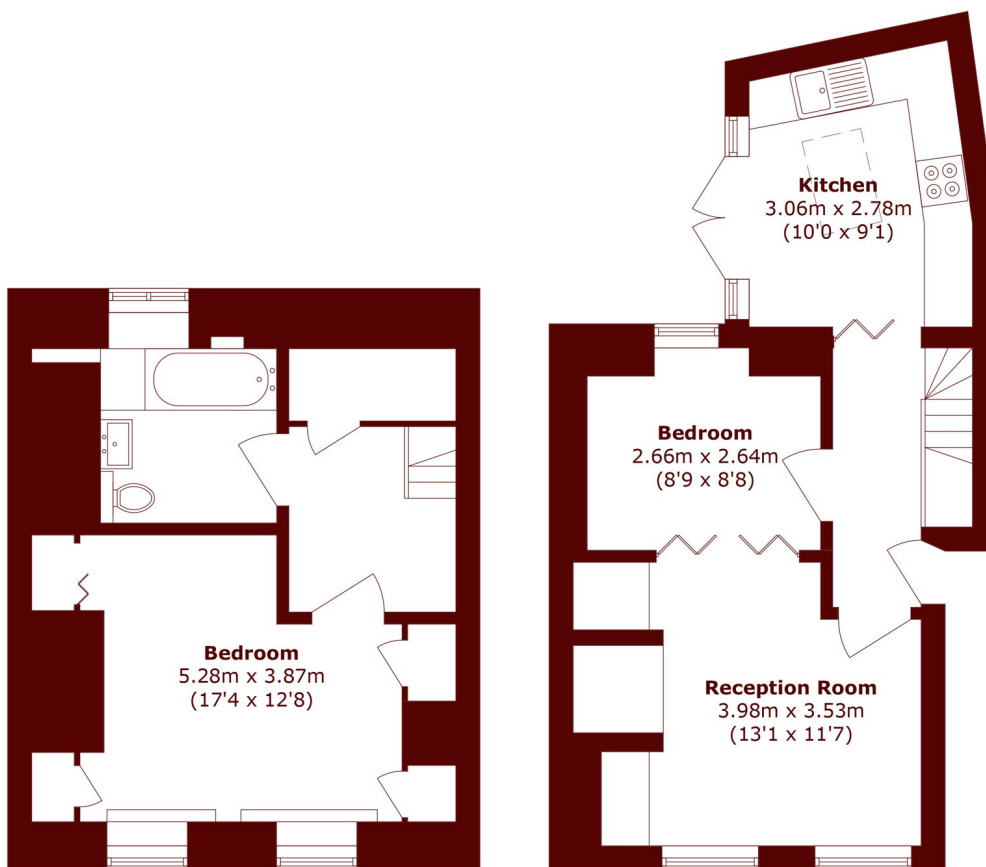
# ABOUT THE PROPERTY

Beautiful period duplex converted apartment, built in the late 1700's and situated moments away from Greenwich park. Renovated throughout to a high quality. Briefly comprises kitchen/breakfast room, private courtyard garden, a spacious lounge, study/bedroom, modern bathroom and large bedroom with fitted wardrobes. Ample storage, high ceilings and double glazed sash windows. Owner could be selling chain free.

Located moments away from the town centre, covered market and Greenwich pier, for the river taxi service. Cutty Sark DLR station, Greenwich rail and DLR station are a short walk away, and North Greenwich tube station is a short bus or cycle ride away.



# STEP INSIDE NEVADA STREET



**Lower Ground Floor**

**Ground Floor**

Total area (approx.): 72.9 sq. m (784.6 sq. ft)

**Greenwich**  
020 8312 8312

Energy Rating: D We aim to make our particulars both accurate and reliable. However, they are not guaranteed; nor do they form part of an offer or contract. If you require clarification on any points then please contact us, especially if you're traveling some distance to view. Please note that appliances and heating systems have not been tested and therefore no warranties can be given as to their good working order

**MARSH &  
PARSONS**