

Kirrane Close New Malden KT3



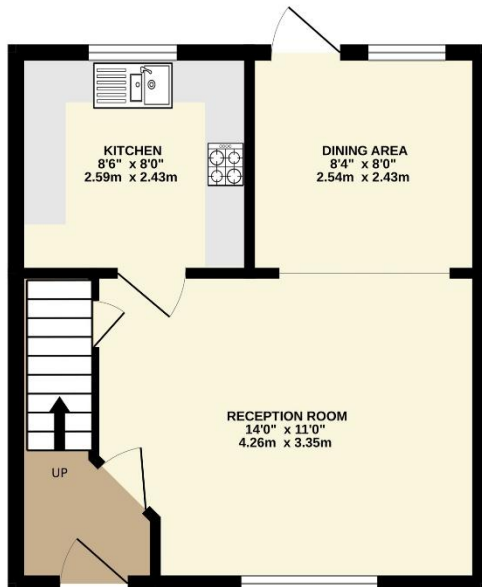
- **Just Refurbished Throughout**
- **Three Bedroom House**
- **EPC Rating C**
- **Catchment For Good Schools**
- **Easy Access to A3**
- **Close To New Malden High Street**

Price £2,300 pcm

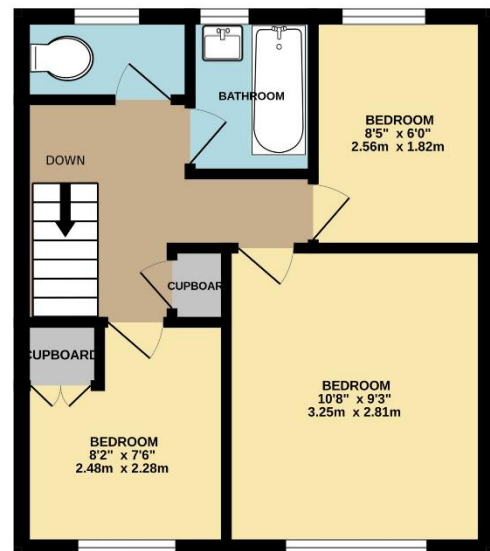
Refurbished throughout, a well presented, three bedroom family home located within walking distance of Coombe Boys Secondary School. The house has a large reception/dining room with rear access to the garden, a good size, modern kitchen which includes a brand new cooker and hob and on the first floor there are three bedrooms, a family bathroom and a separate toilet; there is also residents parking to the front. The property is available now and unfurnished. EPC Rating C. Council Tax Band D. Security Deposit based upon an asking price offer £2,653.



GROUND FLOOR



1ST FLOOR



Whilst every attempt has been made to ensure the accuracy of the floorplan contained here, measurements of doors, windows, rooms and any other items are approximate and no responsibility is taken for any error, omission or mis-statement. This plan is for illustrative purposes only and should be used as such by any prospective purchaser. The services, systems and appliances shown have not been tested and no guarantee as to their operability or efficiency can be given.
Made with Metropix ©2026