



📍 51 Highlands, Potterne, Devizes, Wiltshire, SN10 5NS

🏠 Guide Price £335,000

A wonderfully presented and well maintained detached 3 bedroom village bungalow with a delightful garden.

- Ready To Move Straight in with No Onward Chain
- Beautifully Presented Detached Bungalow
- Three Bedrooms
- 18ft Sitting Room With Log Burning Stove
- Modern Fitted Kitchen
- Stylish Refitted Shower Room
- Garage, Carport & Driveway Parking
- Lovely Private Gardens
- Short Walking Distance to a Convenience Store
- Bus Stop A Stone's Throw Away (With Buses Into Devizes)

🏡 Freehold

🏠 EPC Rating D



Set in an established close within the popular village of Potterne, this smartly presented and much improved detached bungalow is being offered with no onward chain. The nicely proportioned layout comprises 3 bedrooms with a large open plan reception room, whilst outside there are lovely south facing private established gardens.

Internally, an entrance hall with wood effect flooring has a door into a lovely light 18ft open plan sitting/dining room with an inviting log burning stove. Set off the hall is a stylish refitted kitchen/breakfast room with wood effect worktops and tiled flooring. It is well equipped with a built-in oven and grill with an electric 4 ring hob. There are three bedrooms in total (with bedroom two currently used as a dining room). Completing the accommodation is a modern shower room with tiled walls, new flooring and a walkin double width shower.

Outside, there is a block paved driveway for 2 cars leading up to a carport and a single garage with light and power, plus a front lawned garden. The delightful southerly facing rear garden has an extended patio sun terrace and steps up to a lawn with a greenhouse and a pergola with further seating area.

#### **Situation**

Local village amenities are easily accessible on foot from Highlands, which includes a popular village pub, a church, a village hall, playing fields, and a convenience shop. The nearest town is Devizes, which is accessible by car in five minutes, or via bus. Devizes is a popular market town, offering a range of shopping, entertainment and leisure facilities. The nearest primary and secondary schools are located in Devizes, as well as nearby villages including Market Lavington and Urchfont. Potterne is located in the heart of Wiltshire, which is within close proximity to popular local towns including Marlborough and Chippenham.

#### **Property Information**

Services: Mains water, drainage and electricity are all connected. Oil fired central heating.  
Council Tax Band: C



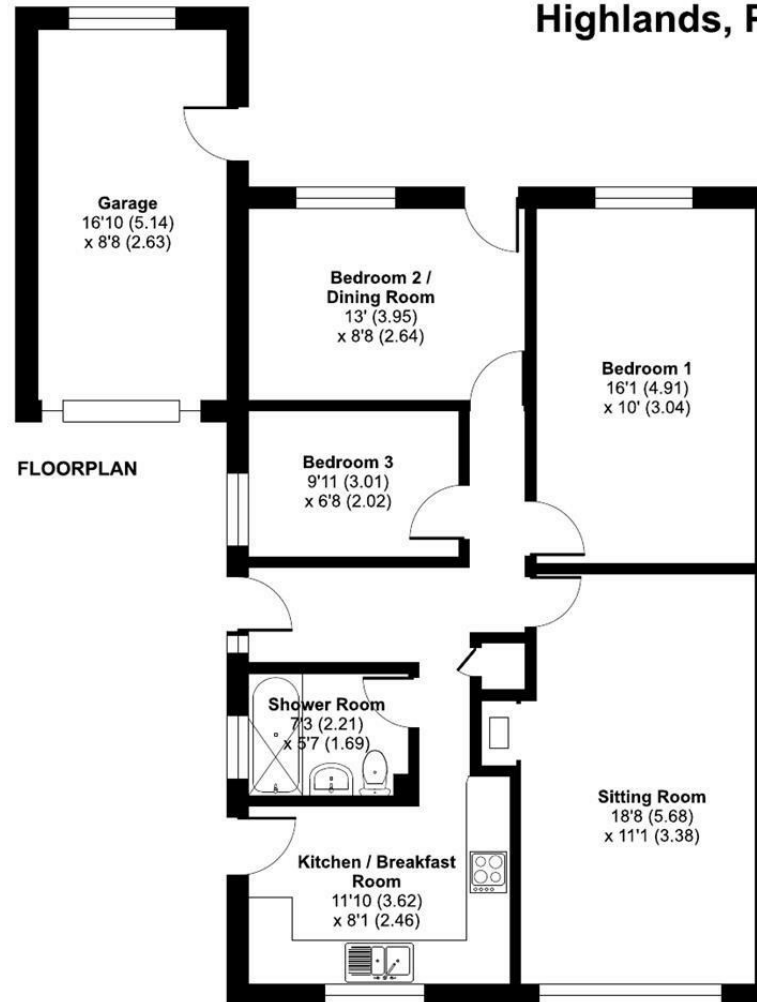
## Highlands, Potterne, Devizes, SN10

Approximate Area = 812 sq ft / 75.4 sq m

Garage = 146 sq ft / 13.5 sq m

Total = 958 sq ft / 88.9 sq m

For identification only - Not to scale



 Floor plan produced in accordance with RICS Property Measurement 2nd Edition, Incorporating International Property Measurement Standards (IPMS2 Residential). © nichecom 2026. Produced for Strakers. REF: 1442380

Disclaimer These particulars, whilst believed to be accurate are set out as a general outline only for guidance and do not constitute any part of an offer or contract. Intending purchasers should not rely on them as statements of representation of fact, but must satisfy themselves by inspection or otherwise as to their accuracy. No person in this firms employment has the authority to make or give any representation or warranty in respect of the property. All measurements and distances are approximate only. Your home is at risk if you do not keep up repayments on a mortgage or other loan secured on it.