



Sallowbush Road, Huntingdon - PE29 7BD

In Excess of £230,000



HARVEY
ROBINSON

Sallowbush Road

Huntingdon, Huntingdon

- Two/Three Bedroom End of Terrace Home
- Good Condition Throughout
- Versatile Accommodation
- Generous Enclosed Front and Rear Gardens
- Fantastic Transport Links
- Close To Amenities
- Ideal First Time Purchase or Investment
- Early Viewing Advised

INTRODUCTION

Harvey Robinson Estate Agents are delighted to offer for sale this well presented and versatile **two/three-bedroom family home**, located in a popular area of **Huntingdon**. The accommodation comprises an **entrance hall, lounge, kitchen**, and a **third bedroom/family room** on the ground floor. To the first floor are **two double bedrooms** and a **shower room**. Externally, the property benefits from **generous front and rear gardens**, making it ideal for families or those seeking flexible living space.

For further information or to arrange a viewing, please contact **Harvey Robinson Estate Agents in Huntingdon**.

LOCATION

Huntingdon is one of Cambridgeshire's most sought-after and best-loved market towns. Renowned as the birthplace of Oliver Cromwell, it boasts a wealth of historic buildings in and around the town centre, giving the area a strong sense of character and heritage. With excellent local amenities and scenic riverside walks, Huntingdon is a popular choice for residents of all ages.

The town centre offers a wide selection of well-known High Street brands, including Marks & Spencer, T G Jones, Boots and TK Maxx, alongside a variety of independent shops. There is also an excellent choice of pubs and restaurants, with The





Sallowbush Road

Huntingdon, Huntingdon

INTRODUCTION

Harvey Robinson Estate Agents are delighted to offer for sale this well presented and versatile **two/three-bedroom family home**, located in a popular area of **Huntingdon**. The accommodation comprises an **entrance hall, lounge, kitchen**, and a **third bedroom/family room** on the ground floor. To the first floor are **two double bedrooms** and a **shower room**. Externally, the property benefits from **generous front and rear gardens**, making it ideal for families or those seeking flexible living space.

For further information or to arrange a viewing, please contact **Harvey Robinson Estate Agents in Huntingdon**.

LOCATION

Huntingdon is one of Cambridgeshire's most sought-after and best-loved market towns. Renowned as the birthplace of Oliver Cromwell, it boasts a wealth of historic buildings in and around the town centre, giving the area a strong sense of character and heritage. With excellent local amenities and scenic riverside walks, Huntingdon is a popular choice for residents of all ages.

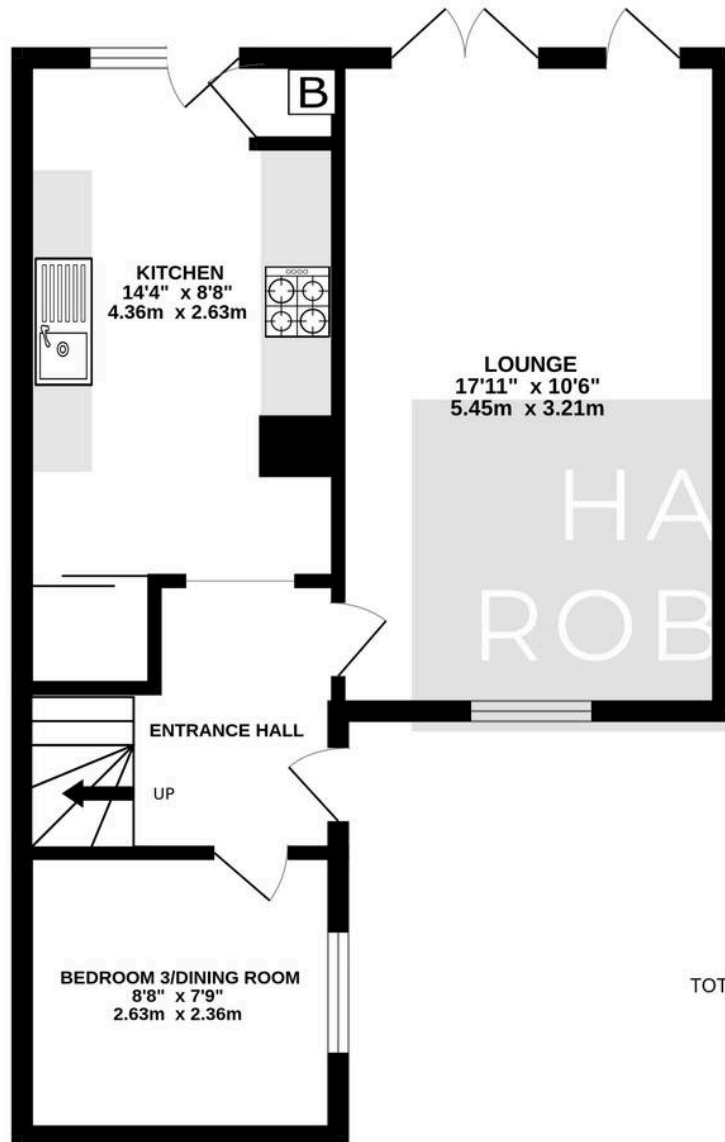
The town centre offers a wide selection of well-known High Street brands, including Marks & Spencer, T G Jones, Boots and TK Maxx, alongside a variety of independent shops. There is also an excellent choice of pubs and restaurants, with The Restaurant and Wine Shop at the Old Bridge Hotel being particularly well regarded.

Huntingdon railway station is just a short walk from the property and provides regular direct services to London King's Cross throughout the day. The central bus station, located nearby, also offers a guided bus service with direct links into Cambridge city centre.

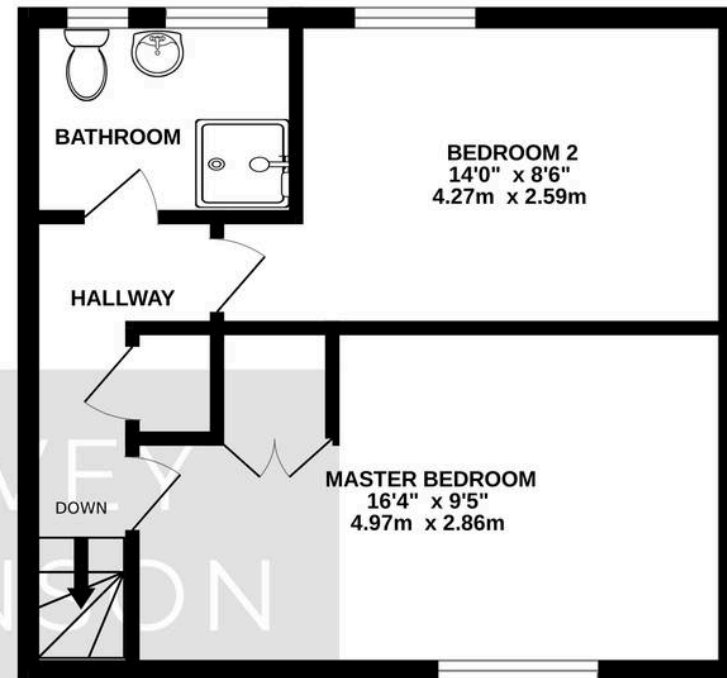
FAQ



GROUND FLOOR
440 sq.ft. (40.9 sq.m.) approx.



1ST FLOOR
343 sq.ft. (31.8 sq.m.) approx.



TOTAL FLOOR AREA : 782 sq.ft. (72.7 sq.m.) approx.

Made with Metropix ©2026



Sallowbush Road

Huntingdon, Huntingdon

INTRODUCTION

Harvey Robinson Estate Agents are delighted to offer for sale this well presented and versatile **two/three-bedroom family home**, located in a popular area of **Huntingdon**. The accommodation comprises an **entrance hall, lounge, kitchen**, and a **third bedroom/family room** on the ground floor. To the first floor are **two double bedrooms** and a **shower room**. Externally, the property benefits from **generous front and rear gardens**, making it ideal for families or those seeking flexible living space.

For further information or to arrange a viewing, please contact **Harvey Robinson Estate Agents in Huntingdon**.

LOCATION

Huntingdon is one of Cambridgeshire's most sought-after and best-loved market towns. Renowned as the birthplace of Oliver Cromwell, it boasts a wealth of historic buildings in and around the town centre, giving the area a strong sense of character and heritage. With excellent local amenities and scenic riverside walks, Huntingdon is a popular choice for residents of all ages.

The town centre offers a wide selection of well-known High Street brands, including Marks & Spencer, T G Jones, Boots and TK Maxx, alongside a variety of independent shops. There is also an excellent choice of pubs and restaurants, with The Restaurant and Wine Shop at the Old Bridge Hotel being particularly well regarded.

Huntingdon railway station is just a short walk from the property and provides regular direct services to London King's Cross throughout the day. The central bus station, located nearby, also offers a guided bus service with

