



Windermere

FOUR BEDROOM DETACHED HOUSE



Ghyll Manor

KENDAL, CUMBRIA

The Windermere

GROUND FLOOR

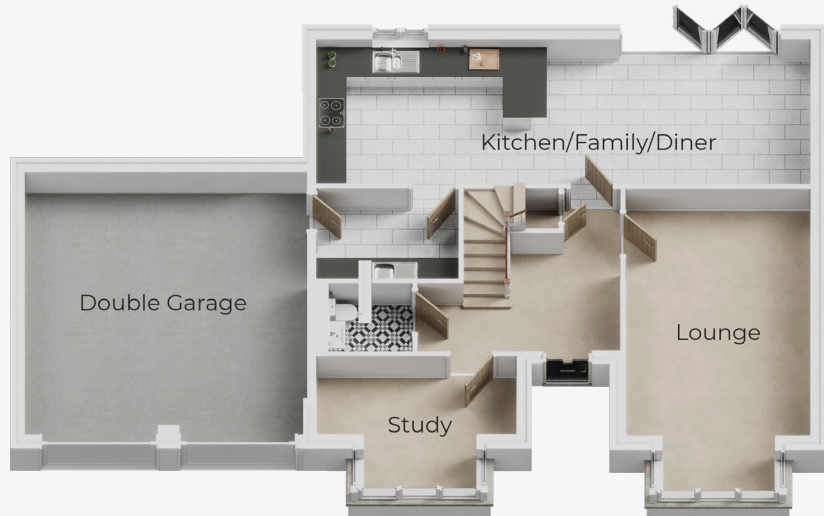
Kitchen/Family/Diner
10.27m x 3.13m

Lounge (max)
3.90m x 6.35m

Study (max)
4.04m x 2.68m

Utility
2.95m x 1.95m

Detached Garage
5.94m x 5.90m



FIRST FLOOR

Primary Bedroom
3.90m x 3.53m

En-Suite 1 (max)
2.40m x 1.62m

Dressing Room 1
1.39m x 1.62m

Bedroom 2
4.04m x 3.07m

En-Suite 2
1.40m x 2.32m

Dressing Room 2
1.43m x 1.41m

Bedroom 3
3.90m x 3.36m

Bedroom 4 (max)
3.63m x 3.12m

Bathroom
3.16m x 1.93m



Tel. 07825 916 623/015395 60605

Underbarrow Road, Kendal, Cumbria LA9 5RS

www.oakmehomes.co.uk


Oakmere[®]
CREATING QUALITY HOMES

The images shown are for illustration purposes only. Whilst every care is taken to ensure accuracy of information contained in this brochure, we cannot take responsibility for any error or misdescription and we reserve the right to alter or amend designs and specifications without prior notice. The information contained herein is for guidance only and does not form part of any contract or warranty. External finishes may vary from those shown and any dimensions given are approximate and sizes may vary from those indicated. Properties may be built handed (mirror image). External materials, landscaping, garage and window positions may vary to suit the location of individual homes. Elevational treatments may vary to those shown, please speak to our New Homes Advisor for the details regarding individual plot specifications.