



LIVERMORES
THE ESTATE AGENTS

3 Bedrooms
House - End Terrace
Located in Dartford

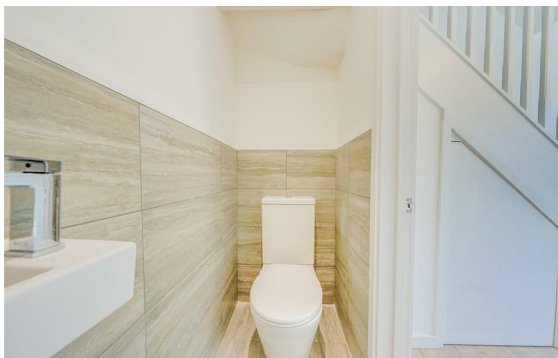
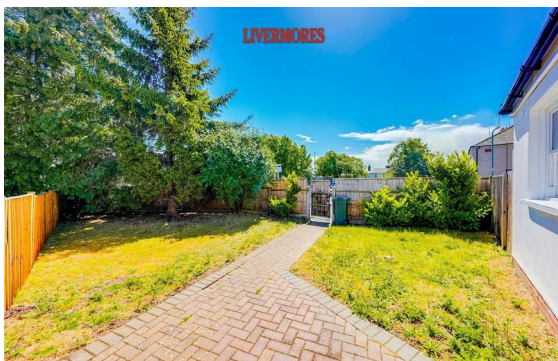
£425,000



dartford@livermores.co.uk

www.livermores.co.uk

01322 228090



GUIDE PRICE £425,000 - £450,000... Livermores are proud to present this charming end-terrace house, which presents an excellent opportunity for families and professionals alike. With three well-proportioned bedrooms, this property offers ample space for comfortable living.

The house features a well-appointed bathroom, ensuring convenience for all residents. The layout is practical and functional, making it easy to create a warm and welcoming home. The end-terrace position allows for added privacy and a sense of space, while still being part of a friendly community.

Dartford is known for its excellent transport links, making it an ideal location for commuters. With local amenities, schools, and parks nearby, this property is perfectly situated for those seeking a balanced lifestyle.

Energy Efficiency Rating: C

Agents Note: Whilst every care has been taken to prepare these particulars, they are for guidance purposes only. All measurements are approximate and are for general guidance purposes only and whilst every care has been taken to ensure their accuracy, they should not be relied upon and potential buyers/tenants are advised to recheck the measurements.

LIVERMORES
THE ESTATE AGENTS

1 Hythe Street
Dartford
Kent
DA1 1BE

01322 228090

dartford@livermores.co.uk

www.livermores.co.uk