



## **Mountbatten Drive, Ferndown, BH22**

**£525,000**

**A four-bedroom detached home set in a sought-after residential location. This property offers generous living space throughout, a good-sized private rear garden, and a garage, all tucked away in a quiet and private position.**

**Bedrooms: 4**

**Bathrooms: 2**

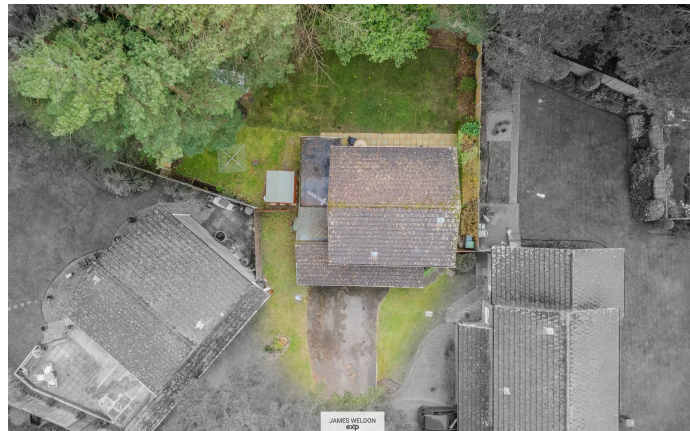
**Receptions: 2**

Tucked away at the end of a peaceful cul-de-sac in one of the area's most sought-after residential locations, this attractive four-bedroom detached home offers generous space, privacy and a superb setting for family life. The property enjoys a welcoming layout, with a bright living room, a separate dining room ideal for gatherings, and a well-appointed kitchen. Upstairs, there are four comfortable bedrooms, including a master bedroom with its own en-suite, alongside a family bathroom.

Outside, the home continues to impress. The good-sized private rear garden provides an excellent space for children to play or for relaxing and entertaining, with plenty of room to enjoy the outdoors. A garage and an additional hobbies room or office add valuable flexibility, whether for storage, working from home or creative pursuits.

Set in a quiet, private position yet close to local amenities, this is a wonderful opportunity to secure a spacious and versatile family home in a highly desirable location.

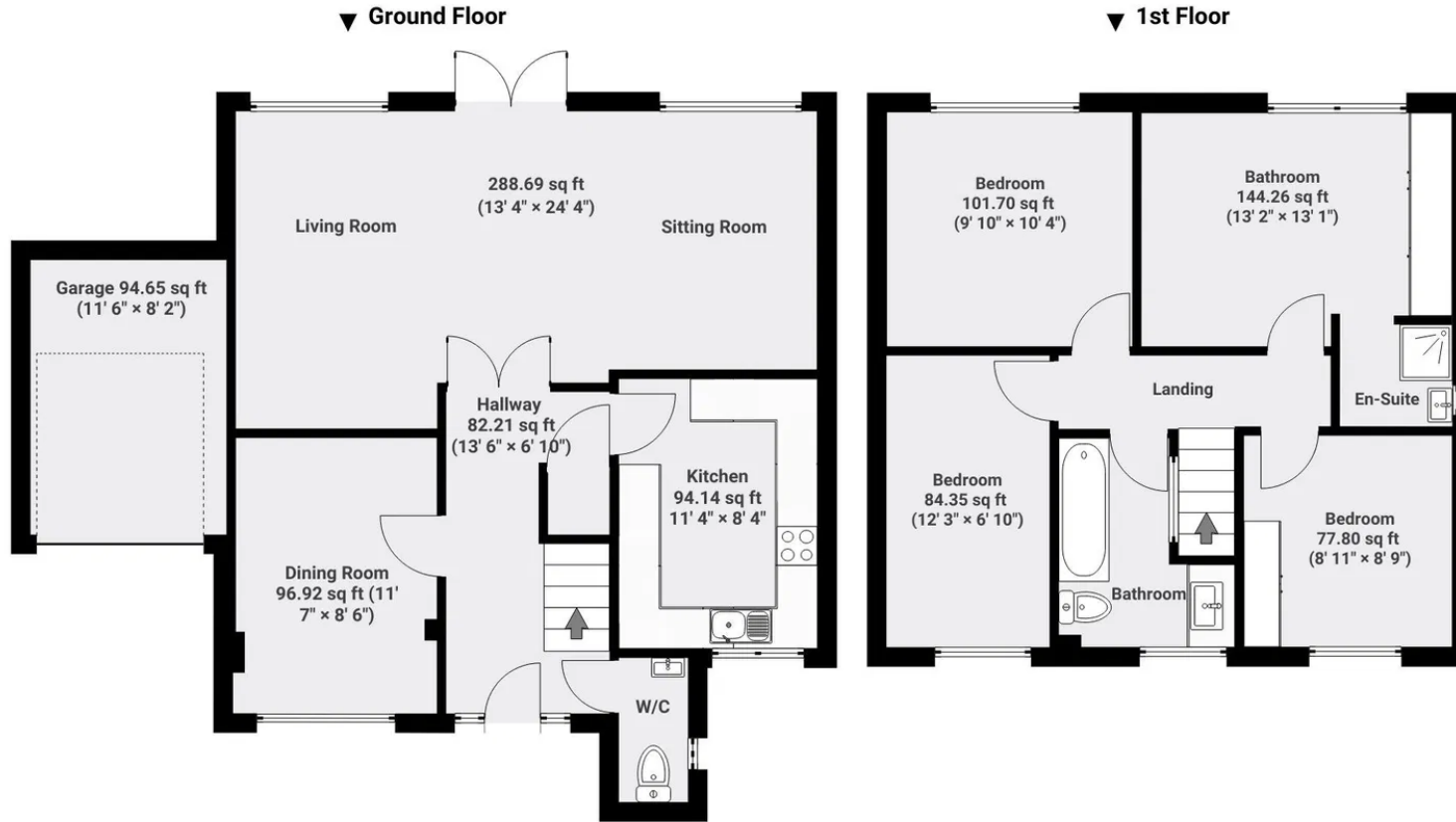




Mountbatten Drive  
Ferndown  
BH22

Total area (Approx):  
1185.77 sq ft  
110.16 sq m

# JAMES WELDON exp



The floorplan is for illustrative purposes only. All dimensions and measurements are approximate. Actual sizes may vary due to construction tolerances, finishing variations, and other factors. Prospective buyers or tenants are advised to verify all measurements independently before making any decisions. FJVISUALS

**James Weldon**

07507 140 969

[james.weldon@exp.uk.com](mailto:james.weldon@exp.uk.com)

<https://jamesweldon.exp.uk.com>