



Thistle Grove, Welwyn Garden City AL7 4AG



welcome to

Thistle Grove, Welwyn Garden City

**** GUIDE PRICE £450,000 – £475,000 **** This attractive three-bedroom semi-detached property, complete with driveway, is ideally positioned close to Moneyhole Park, The Commons Nature Reserve, and Hall Grove shops. The home is also within walking distance of Welwyn Garden City town centre, offering excellent commuter links via the A414, A1(M), and mainline rail services into London. The ground floor boasts a spacious lounge, a recently renovated fully fitted kitchen, and a bright conservatory that provides additional living space. Upstairs, you will find three generously sized bedrooms, a family bathroom, and a separate W/C, making this an ideal home for families or those seeking extra space. Perfectly located for enjoying local green spaces and amenities, this property combines convenience with comfort, offering easy access to schools, shops, and transport links.



Lounge

19' 11" x 11' 11" (6.07m x 3.63m)

Double glazed window to front, wooden flooring, radiator.

Kitchen

16' 5" x 9' 5" (5.00m x 2.87m)

Double glazed window to rear, vinyl flooring, induction hob, electric oven, integrated dishwasher/washing machine.

Conservatory

14' 4" x 11' 11" (4.37m x 3.63m)

French doors to garden, tiled flooring, underfloor heating.

Bedroom One

12' x 10' 4" (3.66m x 3.15m)

Double glazed window to front, carpet, radiator, built in cupboard.

Bedroom Two

12' 1" x 9' 4" (3.68m x 2.84m)

Double glazed window to rear, carpet, radiator.

Bedroom Three

10' x 6' 5" (3.05m x 1.96m)

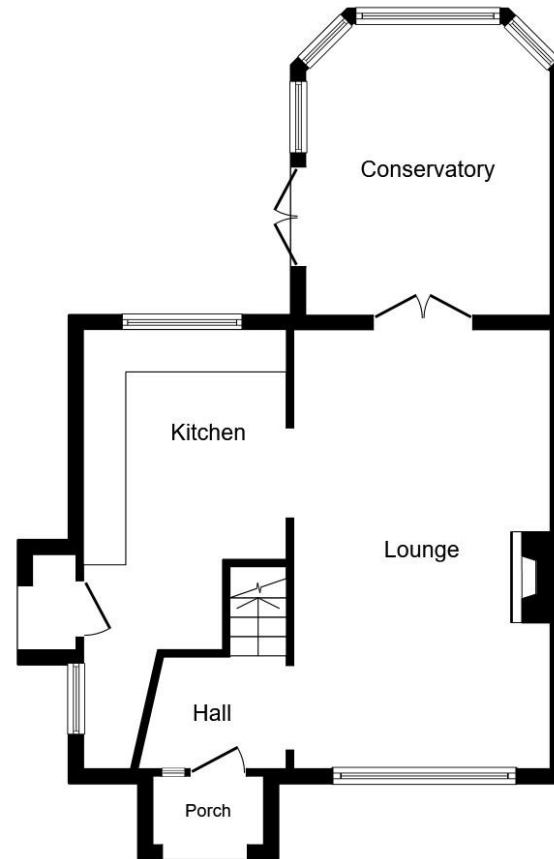
Double glazed window to front and side, carpet, radiator.

Bathroom

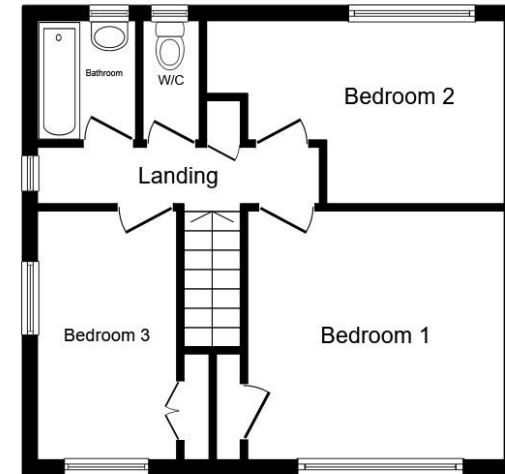
Double glazed window to rear, electric shower, bath, wash hand basin.

Separate W/C

Double glazed window to rear, W/C, vinyl flooring.



Ground Floor



First Floor

Total floor area 99.1 m² (1,067 sq.ft.) approx

This floor plan is for illustrative purposes only. It is not drawn to scale. Any measurements, floor areas (including any total floor area), openings and orientation are approximate. No details are guaranteed, they cannot be relied upon for any purpose and they do not form part of any agreement. No liability is taken for any error, omission or misstatement. A party must rely upon its own inspection(s). Powered by www.propertybox.io



welcome to

Thistle Grove, Welwyn Garden City

- Semi-Detached House
- Three Bedrooms
- Driveway
- Kitchen Fitted 2023
- Conservatory

Tenure: Freehold EPC Rating: C
Council Tax Band: D



guide price

£450,000



check out more properties at williamhbrown.co.uk



Property Ref:
WGN108959 - 0004

1. MONEY LAUNDERING REGULATIONS Intending purchasers will be asked to produce identification documentation at a later stage and we would ask for your co-operation in order that there is no delay in agreeing the sale. 2. These particulars do not constitute part or all of an offer or contract. 3. The measurements indicated are supplied for guidance only and as such must be considered incorrect. Potential buyers are advised to recheck measurements before committing to any expense. 4. We have not tested any apparatus, equipment, fixtures or services and it is in the buyers interest to check the working condition of any appliances. 5. Where an EPC, or a Home Report (Scotland only) is held for this property, it is available for inspection at the branch by appointment. If you require a printed version of a Home Report, you will need to pay a reasonable production charge reflecting printing and other costs. 6. We are not able to offer an opinion either written or verbal on the content of these reports and this must be obtained from your legal representative. 7. Whilst we take care in preparing these reports, a buyer should ensure that his/her legal representative confirms as soon as possible all matters relating to title including the extent and boundaries of the property and other important matters before exchange of contracts.

William H Brown is a trading name of Sequence (UK) Limited which is registered in England and Wales under company number 4268443, Registered Office is Cumbria House, 16-20 Hockliffe Street, Leighton Buzzard, Bedfordshire, LU7 1GN. VAT Registration Number is 500 2481 05.

Please note the marker reflects the
postcode not the actual property


william h brown



01707 324361



WelwynGardenCity@williamhbrown.co.uk



53 Wigmores North, WELWYN GARDEN CITY,
Hertfordshire, AL8 6PG



williamhbrown.co.uk