



Victoria Crescent
BURTON-ON-TRENT

burchell
edwards

Victoria Crescent BURTON-ON-TRENT DE14 2QQ

for sale
£150,000



Property Description

A spacious three-bedroom terraced family home located in a popular residential area in Burton-on-Trent.

This well-presented property is ideal for buyers seeking generous living space, offering two separate reception rooms, a modern shower room alongside a separate bathroom, and three well-proportioned bedrooms. Externally, the home benefits from a sizeable rear garden with an additional outbuilding, perfect for storage or further potential use.

Properties of this quality and space are in high demand—contact Burchell Edwards today to arrange your viewing and take the next step towards making this fantastic home yours!

Rear Porch

Single glazed door to garden and central heating radiator.

Shower Room

Double glazed window, W.C, wash hand basin, shower cubicle, extractor.

Lounge

Double glazed window to front elevation and central heating radiator.

Dining Room

Double glazed window to rear elevation and central heating radiator.

Kitchen

Double glazed window, a range of wall and base units with work surface over incorporating a sink with drainer unit, space and connections for appliances, central heating radiator and central heating boiler housed.

Landing

Loft access via hatch and all doors off.

Bedroom One

Double glazed window to front elevation and central heating radiator.

Bedroom Two

Double glazed window to rear elevation and central heating radiator.

Bedroom Three

Double glazed window to rear elevation and central heating radiator.

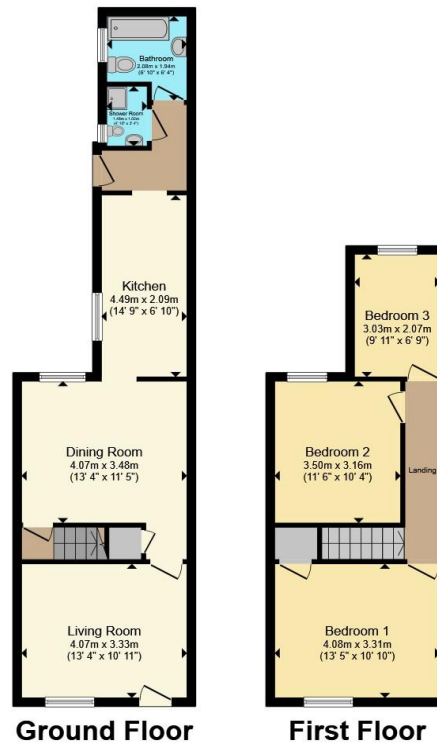
Bathroom

Double glazed window, bath, W.C, wash hand basin.









Total floor area 87.2 m² (938 sq.ft.) approx

This floor plan is for illustrative purposes only. It is not drawn to scale. Any measurements, floor areas (including any total floor area), openings and orientation are approximate. No details are guaranteed, they cannot be relied upon for any purpose and they do not form part of any agreement. No liability is taken for any error, omission or misstatement. A party must rely upon its own inspection(s). Powered by www.propertybox.io



To view this property please contact Burchell Edwards on

T 01283 530 169
E burton@burchelledwards.co.uk

Britannia House Station Street
 BURTON-ON-TRENT DE14 1AN

EPC Rating: C Council Tax
 Band: A

Tenure: Freehold

view this property online burchelledwards.co.uk/Property/BUT211355



1. MONEY LAUNDERING REGULATIONS Intending purchasers will be asked to produce identification documentation at a later stage and we would ask for your co-operation in order that there will be no delay in agreeing the sale. 2. These particulars do not constitute part or all of an offer or contract. 3. The measurements indicated are supplied for guidance only and as such must be considered incorrect. Potential buyers are advised to recheck measurements before committing to any expense. 4. We have not tested any apparatus, equipment, fixtures, fittings or services and it is in the buyers interest to check the working condition of any appliances.

Burchell Edwards is a trading name of Connells Residential which is registered in England and Wales under company number 1489613, Registered Office is Cumbria House, 16-20 Hockliffe Street, Leighton Buzzard, Bedfordshire, LU7 1GN. VAT Registration Number is 500 2481 05.

See all our properties at www.burchelledwards.co.uk | www.rightmove.co.uk | www.zoopla.co.uk

Property Ref: BUT211355 - 0003