

NUMBER SEVEN  
**BROWNLOW**  

---

CLOSE



## A HOME WITH PRESENCE & PERSONALITY

Set within a quiet cul-de-sac, Number Seven is striking contemporary home stands as a celebration of modern design and individual character. Built in 2004 as a bespoke self-build, it combines bold architectural form with exceptional comfort and energy efficiency, a home that feels as calm and inviting as it is unique.

Every element of Number Seven has been thoughtfully considered, from the open-plan living spaces to the innovative heat recovery system that captures warmth from the indoor pool to heat the home. The result is a residence that feels beautifully balanced, where light, texture and flow come together in harmony.





## EVERY DAY LIVING WITH **STYLE & FLOW**

A welcoming introduction to the home, the hallway sets the tone with ceramic tiled flooring and glazed side panels that draw in the light. There is a cloak cupboard for storage and a beautifully designed WC featuring a Fired Earth stone basin, mosaic detailing and contemporary fixtures.

Designed for effortless everyday living, the principal living area is warm and open, with oak flooring underfoot and a central fireplace framed in Estonian granite, a tactile centrepiece that adds a natural depth to the space.

Large windows and French doors draw in soft natural light and open to the garden, connecting the indoors with the peaceful greenery beyond. In the evenings, this space transforms beautifully, with a built-in projector creating the perfect setting for cosy movie nights or relaxed weekend gatherings.





## THE HEART OF THE HOME

The open connection through to the kitchen and dining space makes this an ideal layout for entertaining, while the flow of light and air gives a constant feeling of calm and comfort throughout the day.

The kitchen and dining area is wonderfully light, framed by a deep bay window that overlooks the adjoining countryside.

Solid oak cabinetry is paired with granite worktops, and a striking circular stainless-steel water station creates a focal point that feels both sculptural and practical.





## COOK UP A STORM

Integrated appliances include a stainless Zanussi hob, CDA double oven and microwave, with a breakfast bar offering the perfect place for casual dining.

The adjoining dining area enjoys a panoramic view of the fields beyond, a space that naturally draws everyone together, whether for morning coffee in the sunshine or dinner with friends at dusk.





## YOUR PRIVATE **POOL RETREAT**

Perhaps the most remarkable feature of the home, a private indoor heated swimming pool set within a fully tiled leisure suite. The pool measures over 17 feet in length and is complemented by a bespoke wall design, integrated shower area and glazed internal windows that allow light to filter softly through the space.

This room offers year-round enjoyment and a sense of tranquillity rarely found in a home of this size.





## A PEACEFUL PRINCIPAL SUITE

The principal bedroom is beautifully individual, octagonal in shape, with a wide bay of three windows framing open countryside views. It is a space that feels both architectural and restful, with soft light throughout the day.

An adjoining dressing room provides generous fitted storage with hanging rails and shelving, completing a private suite that feels quietly indulgent.



## RELAX & UNWIND

A spacious double bedroom positioned to the rear of the home, again capturing those far-reaching countryside views. The proportions are excellent, with room for additional furniture or a peaceful work-from-home space if desired.

Another generous double room mirrors the views of the surrounding fields. Light and tranquil, it is ideal as a guest bedroom, child's room, or creative space.

The family bathroom has been designed with an emphasis on style and comfort. A white suite is paired with mosaic detailing and recessed shelving, while the oversized bath with shower attachment provides the perfect place to unwind.

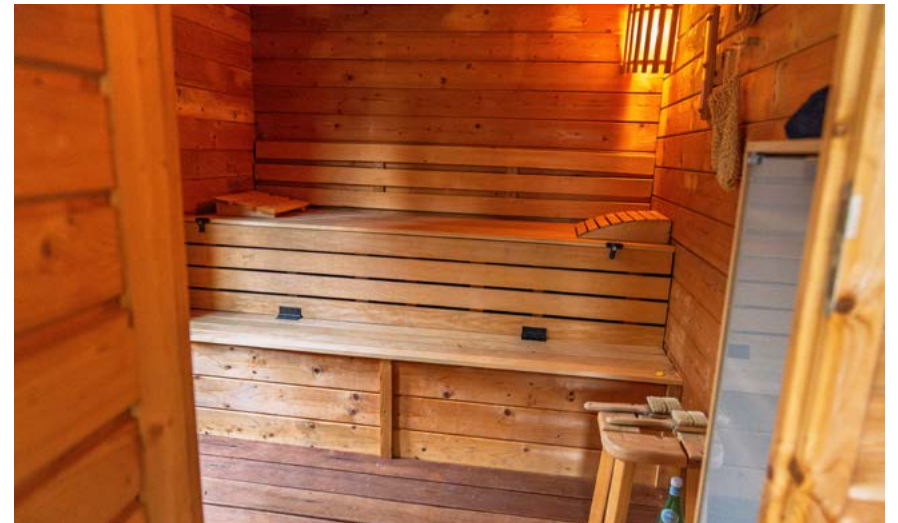


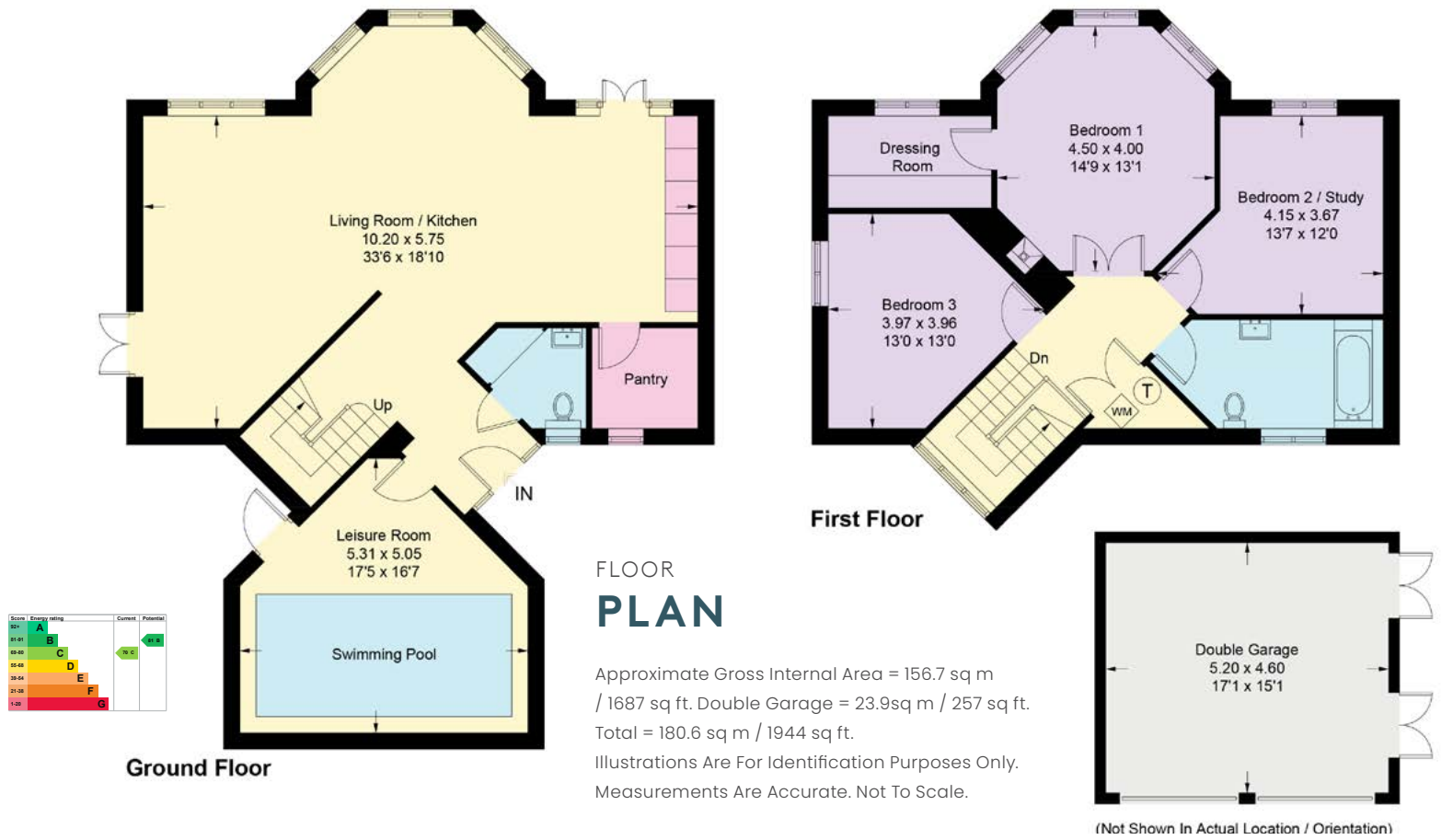
## OUTDOOR SPACES

The setting of Number Seven Brownlow Close is wonderfully private, designed to embrace its open countryside backdrop. The rear garden is thoughtfully landscaped with gravel pathways, mature planting and uninterrupted views across the fields, creating a genuine sense of space and calm.

A sociable seating area flows from the lounge to the garden, ideal for evening gatherings or al fresco dining beside the charming log cabin — a natural extension of the home's living space.

The log cabin adds exceptional versatility, currently arranged as a home office, store room and sauna, offering both practical solutions and a peaceful retreat. A double garage with power, lighting and French doors opening to the garden presents further potential, perfectly suited to use as a workshop, gym or creative studio.





Smith & Co Estates use all reasonable endeavours to supply accurate property information in line with the Consumer Protection from Unfair trading Regulations 2008. These property details do not constitute any part of the offer or contract and all measurements are approximate. The matters in these particulars should be independently verified by prospective buyers. It should not be assumed that this property has all the necessary planning, building regulation or other consents. Any services, appliances and heating system(s) listed have not been checked or tested. Purchasers should make their own enquiries to the relevant authorities regarding the connection of any service. No person in the employment of Smith & Co Estates has any authority to make or give any representations or warranty whatever in relation to this property or these particulars or enter into any contract relating to this property on behalf of the vendor. Floor plan not to scale and for illustrative purposes only. Some of the images and floorplans shown throughout the marketing and within the brochure are computer generated images and may not be accurate and therefore should not be relied upon for decision making. The accuracy of the dimensions, layout and visuals are not guaranteed and may be subject to change.

Presented By

Smith & Co.  
e s t a t e s

Unwin Suite, Innisdoon, 1 Crow Hill Drive, Mansfield NG19 7AE

To view Number Seven Brownlow Close, call our team on 01623 392352 or email [info@smithandcoestates.co.uk](mailto:info@smithandcoestates.co.uk)



to view video



[presumes.cobras.miracles](https://presumes.cobras.miracles)