

# Kingston Road

## SOUTHVILLE

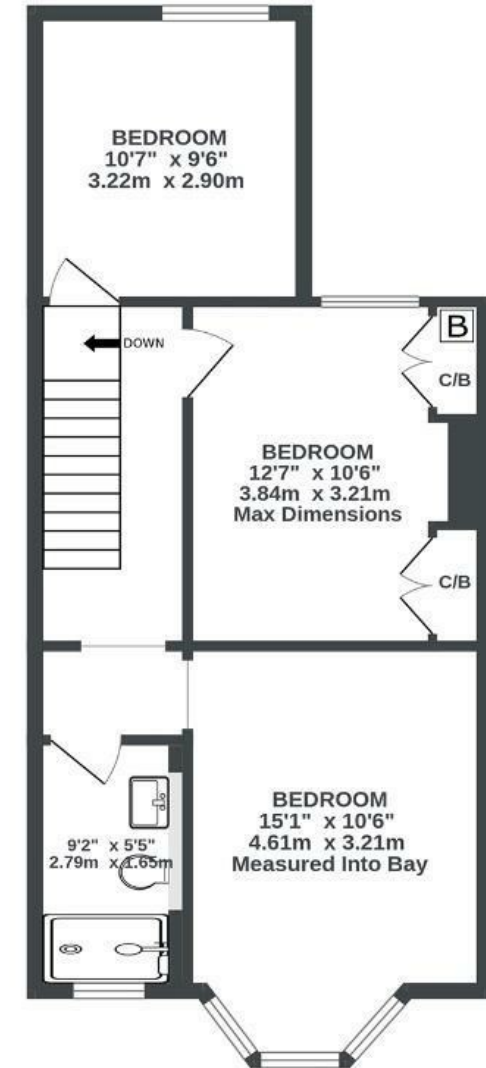
APPROXIMATE FLOOR AREA  
101 SQM / 1087 SQFT



GROUND FLOOR  
577 sq.ft. (53.6 sq.m.) approx.



1ST FLOOR  
510 sq.ft. (47.3 sq.m.) approx.



Illustrations are for reference purposes only, measurements are approximate, not to scale.

Boardwalk

# Kingston Road , BRISTOL



£625,000



3 Bedrooms



BS3 1DS



2 Bathrooms

*"We've loved living in Southville. North Street is just around the corner, with so many great cafés, restaurants and pubs, and we often pop down to Wapping Wharf for a coffee or head over to Ashton Court for a walk. The house has loads of character and the kitchen extension is really the heart of the home, where everyone naturally comes together. It's been a great first family home and somewhere we've really loved living."*

