



Apartment 5, Manor Court, 196, Altrincham Road,

Offers In Region Of £165,000

🛏️ 2 🚿 1 🚗 1

- Two Bedroom Apartment.
- Beautiful Open Plan Living Space.
- Allocated Undercroft & Gated Parking.
- First Floor Position with Lift
- Excellent Location Close to Gatley & Motorway Networks
- Immaculate Finish Throughout.
- Meticulously maintained throughout.
- No Onward Vendor Chain.
- Rear of the Development Position
- Tenure - Leasehold / EPC - C / Council Tax Band - B

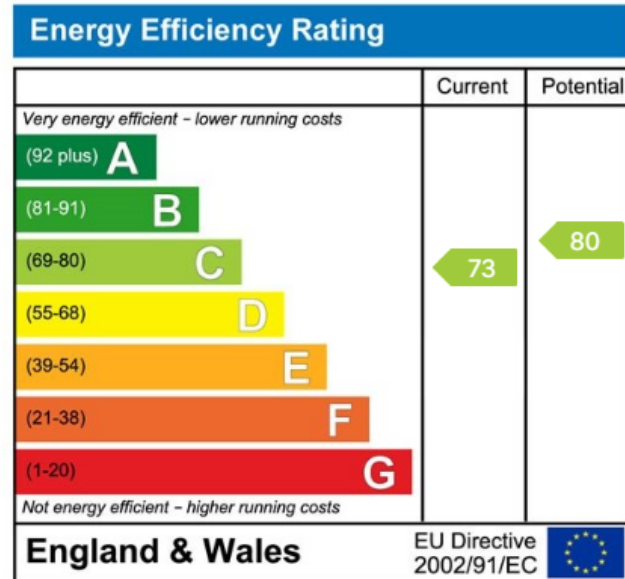
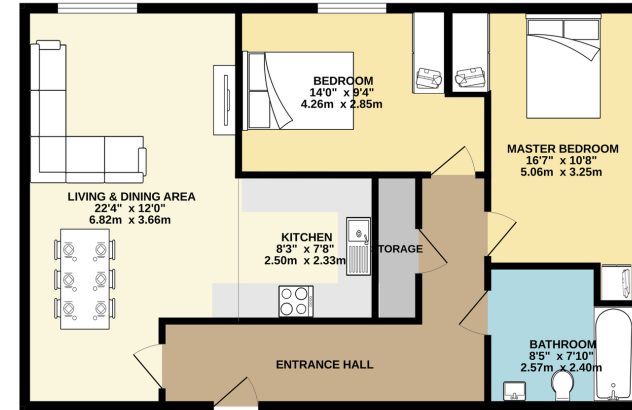


This immaculately presented first-floor apartment in the exclusive Manor Court development is just a short walk from Gatley Village and is offered with no onward chain. Beautifully updated and maintained, the property features a welcoming entrance hall with a large walk-in store, leading to a spacious open-plan living area with a bright lounge, tree-lined views, and a stylish fitted kitchen with integrated appliances. There is also space for dining, ideal for entertaining. The apartment offers two generous double bedrooms and a modern three-piece bathroom with a shower over the bath. Additional benefits include new energy-efficient electric heaters throughout. Externally, the development provides secure gated allocated undercroft parking and well-kept communal gardens.





GROUND FLOOR
770 sq.ft. (71.5 sq.m.) approx.



9 Gatley Road, Cheadle, Cheshire SK8 1LY Tel. 0161 428 1488 Fax. 0161 428 1479
 Email. mail@andrewdawson.co.uk