



Silver Green, King's Lynn, PE30 4SG

welcome to

Silver Green, King's Lynn

Ideal first time buy or investment opportunity with this well presented two bedroom mid terrace house with two reception rooms. Ideally located close to The Queen Elizabeth Hospital. Viewing highly recommended.



Entrance Door To:-

Entrance Hall

Radiator, storage cupboard, stairs to first floor

Lounge

13' 6" x 11' 6" (4.11m x 3.51m)

Double glazed window, radiator, laminate floor, double doors to:-

Dining Room

9' 9" x 8' 3" (2.97m x 2.51m)

Double glazed window, radiator, laminate floor

Kitchen

10' 3" x 8' (3.12m x 2.44m)

Range of base and wall units, roll edge work top, inset ceramic sink with mixer tap over, space for oven, washing machine and fridge freezer, double glazed window, tiled floor, door to:-

Utility Area

Double glazed door to rear, space for dryer, tiled floor

First Floor Landing

Loft access, storage cupboard

Bedroom One

13' 5" x 9' 4" (4.09m x 2.84m)

Double glazed window, radiator, storage cupboard

Bedroom Two

10' 1" x 9' 2" (3.07m x 2.79m)

Double glazed window, radiator, storage cupboard

Bathroom

9' 9" x 5' 2" (2.97m x 1.57m)

Bath with electric shower over and shower screen, low level WC, wash hand basin, heated towel rail, two double glazed windows

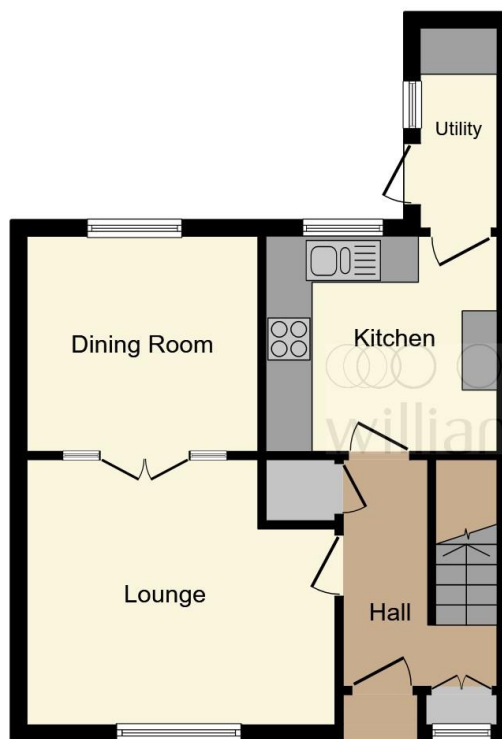
Walk-In Dressing Room

6' 7" x 4' (2.01m x 1.22m)

Double glazed window, radiator

Outside

Enclosed gardens to front and rear with access gate



Ground Floor



First Floor

This floor plan is for illustrative purposes only. It is not drawn to scale. Any measurements, floor areas (including any total floor area), openings and orientation are approximate. No details are guaranteed, they cannot be relied upon for any purpose and they do not form part of any agreement. No liability is taken for any error, omission or misstatement. A party must rely upon its own inspection(s). Powered by www.focalagent.com



check out more properties at williamhbrown.co.uk



welcome to

Silver Green, King's Lynn

- Ideally Located Close to the Queen Elizabeth Hospital
- Mid-Terrace House
- Two Bedrooms
- Two Reception Rooms
- Nicely Presented

Tenure: Freehold EPC Rating: C
Council Tax Band: A

£165,000



Please note the marker reflects the
postcode not the actual property

check out more properties at williamhbrown.co.uk



Property Ref:
KLN119180 - 0002

1. MONEY LAUNDERING REGULATIONS Intending purchasers will be asked to produce identification documentation at a later stage and we would ask for your co-operation in order that there is no delay in agreeing the sale. 2. These particulars do not constitute part or all of an offer or contract. 3. The measurements indicated are supplied for guidance only and as such must be considered incorrect. Potential buyers are advised to recheck measurements before committing to any expense. 4. We have not tested any apparatus, equipment, fixtures or services and it is in the buyers interest to check the working condition of any appliances. 5. Where an EPC, or a Home Report (Scotland only) is held for this property, it is available for inspection at the branch by appointment. If you require a printed version of a Home Report, you will need to pay a reasonable production charge reflecting printing and other costs. 6. We are not able to offer an opinion either written or verbal on the content of these reports and this must be obtained from your legal representative. 7. Whilst we take care in preparing these reports, a buyer should ensure that his/her legal representative confirms as soon as possible all matters relating to title including the extent and boundaries of the property and other important matters before exchange of contracts.

William H Brown is a trading name of Sequence (UK) Limited which is registered in England and Wales under company number 4268443, Registered Office is Cumbria House, 16-20 Hockliffe Street, Leighton Buzzard, Bedfordshire, LU7 1GN. VAT Registration Number is 500 2481 05.



01553 771337



KingsLynn@williamhbrown.co.uk



40-42 King Street, KING'S LYNN, Norfolk, PE30 1ES



williamhbrown.co.uk