



## Blegborough Road, SW16

£280,000

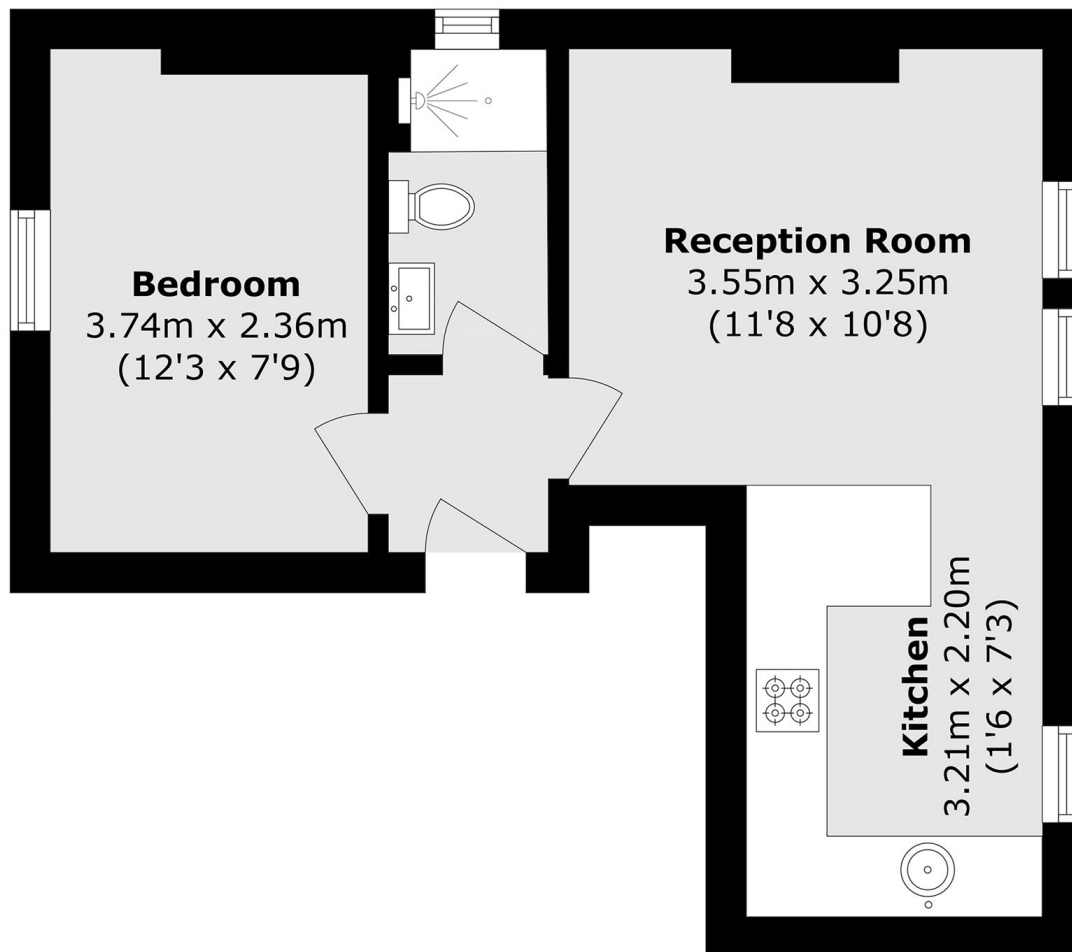
OFFERS OVER This bright first floor flat has been decorated to a high standard throughout. The high ceilings and large windows flood the property with natural light and the quiet residential road makes this a perfect first home.

Blegborough Road is a popular residential street situated on the borders of Streatham and Tooting. Streatham Common mainline station for access to London Bridge and London Victoria is less than half mile away. Streatham High Road and the open spaces of Tooting Common are also within easy reach.

### Features

- Excellent Condition
- Open Plan Living
- First Floor Flat
- Long Lease
- Quiet Road
- High Ceilings

Blegborough Road,  
London, SW16



Total area (approx.): 32.8 sq. m (353.1 sq. ft)