



Connells

Hayfield
Chells Manor Stevenage



Property Description

GUIDE PRICE £550-570,000

A stunning four bedroom DETACHED home located in CHELLS MANOR with GARAGE & DRIVEWAY. This property has been tastefully extended and refurbished to create the perfect home for a growing family. - Available CHAIN FREE this is not one to miss!

On the ground floor there is an entrance hall, spacious lounge, lobby, cloakroom and an extended kitchen/diner. The kitchen has been thoughtfully designed and is the heart of the home! With fitted appliances including induction hob, double oven, microwave, dishwasher, washing machine and tumble dryer. There is also a dining area with patio doors leading on the garden.

The first floor comprises four bedrooms, the master which boasts a stunning modern fitted en suite and a family shower room, again finished to a high standard with some brilliant extra's, such as a speaker from the ceiling! All the bedrooms have fitted wardrobes providing more than ample storage too. The loft is fully boarded and offers further potential to expand.

Externally the property catches the eye and benefits from a garage with an electric door & driveway parking to front. The rear garden is enclosed and low maintenance, ideal for entertaining!

Hayfield in Chells Manor is ideally located within easy reach of local amenities, good schooling for all ages & convenient road links to the town centre & A1M serving the north & south. Stevenage provides a fast & efficient link to London via the mainline station.

Entrance Hall

Lounge

Lobby

Cloakroom

Kitchen / Diner

Landing

Bedroom One

En-Suite

Bedroom Two

Bedroom Three

Bedroom Four

Shower Room

Outside

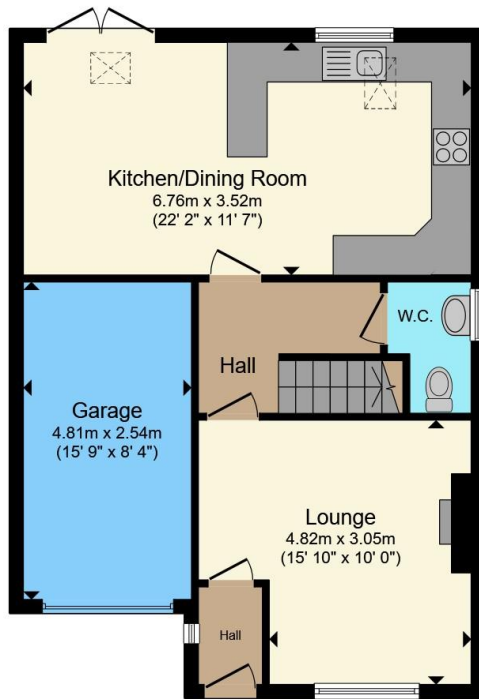
Front Garden

Rear Garden

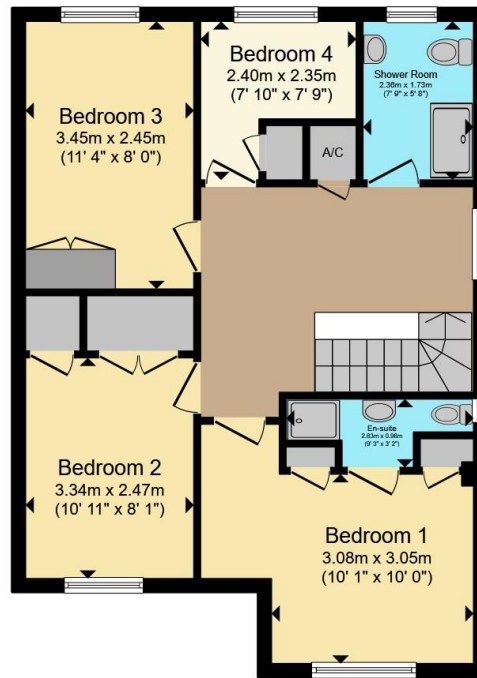
Garage

Driveway





Ground Floor



First Floor

Total floor area 123.1 m² (1,325 sq.ft.) approx

This floor plan is for illustrative purposes only. It is not drawn to scale. Any measurements, floor areas (including any total floor area), openings and orientation are approximate. No details are guaranteed, they cannot be relied upon for any purpose and they do not form part of any agreement. No liability is taken for any error, omission or misstatement. A party must rely upon its own inspection(s). Powered by www.propertybox.io



To view this property please contact Connells on

T 01438 318 080
E stevenage@connells.co.uk

8 Market Place
 STEVENAGE SG1 1DB

EPC Rating: C Council Tax
 Band: E

view this property online connells.co.uk/Property/STV312531

Tenure: Freehold



1. MONEY LAUNDERING REGULATIONS Intending purchasers will be asked to produce identification documentation at a later stage and we would ask for your co-operation in order that there will be no delay in agreeing the sale. 2. These particulars do not constitute part or all of an offer or contract. 3. The measurements indicated are supplied for guidance only and as such must be considered incorrect. Potential buyers are advised to recheck measurements before committing to any expense. 4. We have not tested any apparatus, equipment, fixtures, fittings or services and it is in the buyers interest to check the working condition of any appliances.

Connells Residential is registered in England and Wales under company number 1489613, Registered Office is Cumbria House, 16-20 Hockliffe Street, Leighton Buzzard, Bedfordshire, LU7 1GN. VAT Registration Number is 500 2481 05.

See all our properties at www.connells.co.uk | www.rightmove.co.uk | www.zoopla.co.uk

Property Ref: STV312531 - 0006