



LADBROKE TERRACE, W11

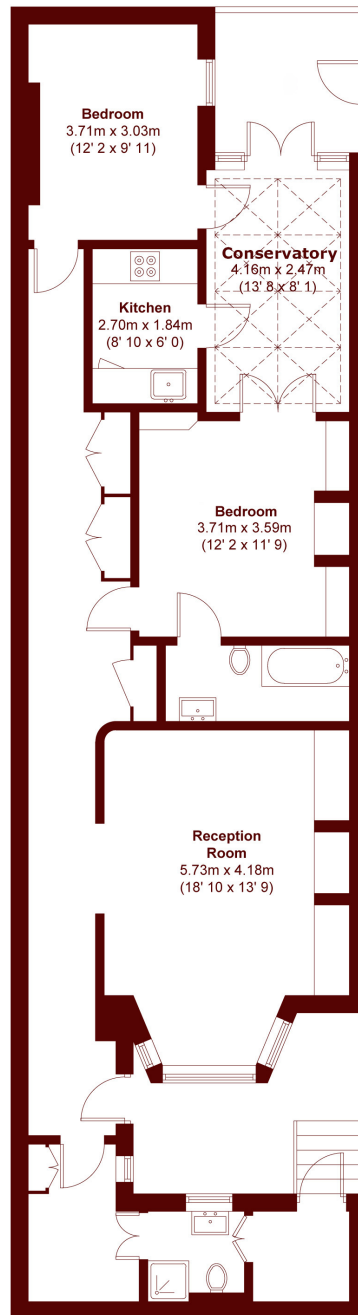
£950 per week (£4,116 per month)

A stunning two-bedroom garden apartment with a west-facing patio garden, ideally positioned in the heart of Notting Hill moments from Holland Park and Notting Hill Gate.

Two bedroom
Two bathroom
Private patio

Period building
Wooden flooring
EPC - C

STEP INSIDE LADBROKE TERRACE



APPROX. GROSS INTERNAL FLOOR AREA = 1100 SQFT / 102.2 SQM

Notting Hill
020 7313 6910

Energy Rating: C We aim to make our particulars both accurate and reliable. However, they are not guaranteed; nor do they form part of an offer or contract. If you require clarification on any points then please contact us, especially if you're traveling some distance to view. Please note that appliances and heating systems have not been tested and therefore no warranties can be given as to their good working order

**MARSH &
PARSONS**