



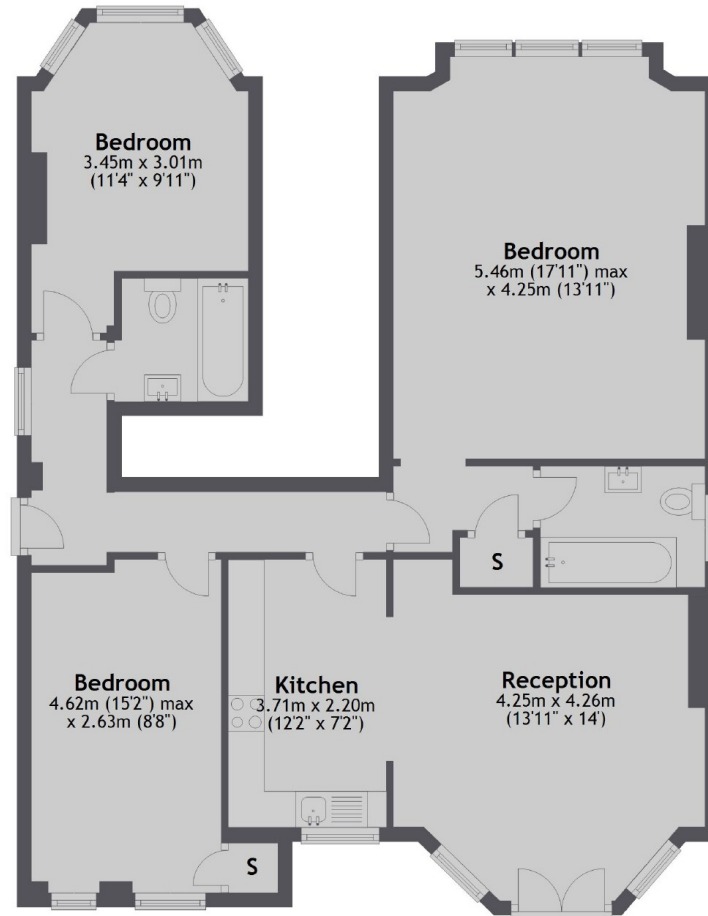
## Grange Road, W5

£738 pw (£3,200 pcm)

A spacious three double bedroom ground floor flat set within an attractive period conversion. This well presented apartment features two bathrooms, high ceilings throughout and access to a landscaped communal garden.

Grange Road is less than half a mile from Ealing Broadway station (Central, District and Elizabeth lines and overground) and moments away from the open green spaces of Ealing Common.

## Ground Floor



Total area: approx. 89.7 sq. metres (965.4 sq. feet)

Robertson Smith & Kempson Ealing Lettings  
1 The Broadway,  
London, W5 2NT  
020 8840 7885  
ealinglettings@robertsonsmithandkempson.co.uk

Energy Rating: D. We aim to make our particulars both accurate and reliable. However they are not guaranteed; nor do they form part of an offer or contract. If you require clarification on any points then please contact us, especially if you're traveling some distance to view. Please note that appliances and heating systems have not been tested and therefore no warranties can be given as to their good working order.