



ZAFER CETINEL POWERED BY **exp** TM UK

@ zafer.cetinel@exp.uk.com

zafercetinel.exp.uk.com

01242 374 844

Apple Orchard, Prestbury, Cheltenham, GL52 3EH

Offers Over £700,000

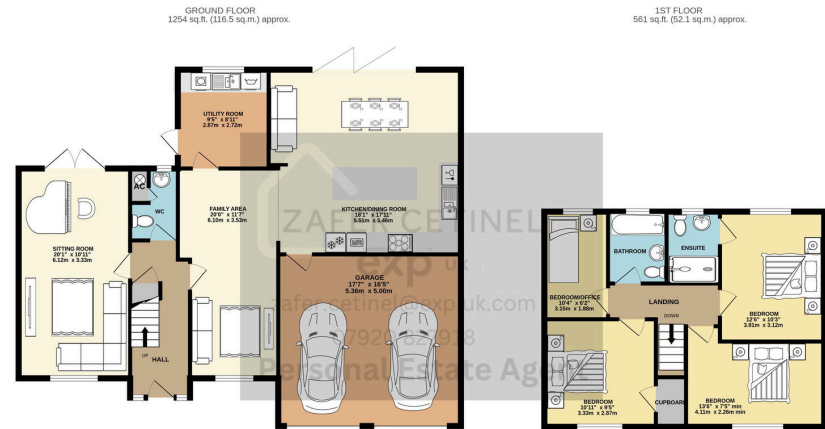
🛏️ 4 🚿 2 🛋️ 2

- PRESTBURY, APPLE ORCHARD
- AMAZING KITCHEN / DINER AND SEPARATE UTILITY ROOM
- WALKING DISTANCE TO PRESTBURY VILLAGE AND RACE COURSE
- LARGE FRONT AND REAR GARDEN
- FOUR BEDROOMS, TWO BATHROOMS AND TWO RECEPTION ROOMS
- EXTENDED STUNNING FAMILY HOME
- CORNER POSITION IN A QUIET CUL DE SAC LOCATION
- AMAZING WALKS ON YOUR DOOR STEPS
- DOUBLE GARAGE AND GENEROUS DRIVEWAY
- REF ZAFER CETINEL THE PRESTBURY AGENT



Discover this beautifully extended four-bedroom detached family home, set on a generous corner plot. The welcoming entrance hall leads to two spacious reception rooms and a large double-aspect lounge with patio doors to the rear garden. The stunning kitchen diner features integrated Bosch appliances, granite worktops, and bi-fold doors for seamless indoor-outdoor living. Upstairs, find three double bedrooms, a single bedroom, an en-suite shower room, and a family bathroom. Enjoy ample outdoor space with a landscaped rear garden, multiple patios, a double garage, and a driveway. Conveniently located within walking distance of Prestbury village, the racecourse, and excellent schools, including St Mary's Federation. This exceptional home perfectly balances modern elegance and family comfort.





TOTAL FLOOR AREA: 1815 sq.ft. (168.6 sq.m.) approx.

Whilst every attempt has been made to ensure the accuracy of the floorplans contained here, measurements of doors, windows, rooms and any other items are approximate and no responsibility is taken for any error, omission or mis-statement. This plan is for illustrative purposes only and should be used as such by any prospective purchaser. The services, fixtures and appliances shown have not been tested and no guarantee as to their operability or efficiency can be given.

Made with floorplan 12/20

