



463 Lyveden Way

Corby, Northamptonshire NN18 8RU



**Simpson West**



Located in the popular Oakley Vale area, this deceptively spacious detached home offers generous accommodation throughout and is perfectly suited to family living. The property opens with a striking reception hall, giving access to a cloakroom/WC, a sizeable living room with patio doors opening to rear garden, a separate dining room and a well-equipped kitchen/breakfast room.

Upstairs, you will find four double bedrooms. The master bedroom benefits from its own en-suite and a dedicated dressing area fitted with space for wardrobes on both sides. A four piece family bathroom serves the remaining bedrooms. The enclosed rear garden is of a good size and mainly laid to lawn, complemented by a decked patio area and a selection of mature trees and greenery. At the front, a driveway provides off-road parking and leads to the garage. Energy Rating: C. Council Tax Band: E

£329,950



4



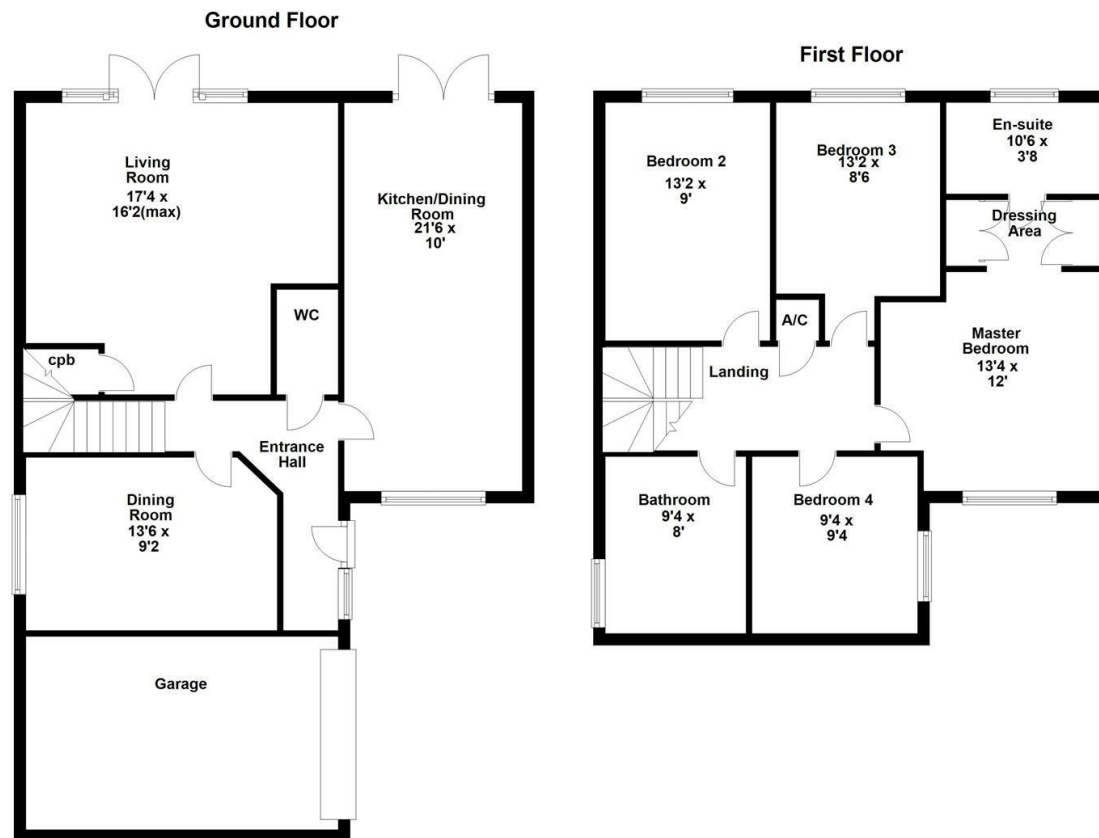
2



1



Simpson West



Energy Efficiency Rating		
	Current	Potential
Very energy efficient - lower running costs		
(92 plus) <b>A</b>		
(81-91) <b>B</b>		
(69-80) <b>C</b>	74	84
(55-68) <b>D</b>		
(39-54) <b>E</b>		
(21-38) <b>F</b>		
(1-20) <b>G</b>		
Not energy efficient - higher running costs		
<b>England &amp; Wales</b>	EU Directive 2002/91/EC	





When you buy with Simpson West, you know **you'll be in safe hands**. From the moment you walk through our doors, we'll make you **feel truly welcome**. Our sales consultants and financial advisors will take you through **every step of the process**, offering **free expert advice** along the way, from help choosing the right mortgage and insurance through to finding your conveyancer. And if you need help selling your home too, **with over 20 years of local experience, you can trust us to get you moving**.



**Simpson  
West**

Making Every  
Journey Personal



01536 202007

[info@simpsonwest.co.uk](mailto:info@simpsonwest.co.uk)

<https://www.simpsonwest.co.uk/>

64 Corporation Street, Corby, Northants, NN17 1NH