



## 8 Hill Cottages | Rosedale East. YO18 8RG

An attractive and well presented character cottage which has been modernised to an extremely high specification and benefitting from off road parking, garage, good sized rear garden with stunning views of surrounding countryside. The accommodation comprises spacious lounge with multi burning stove, re-fitted kitchen with built in appliances and cloakroom with w.c. on the ground floor; first floor accommodation comprises landing, two bedrooms with well appointment "jack and jill" bathroom. Externally to the rear there is a long garden

with seating area to the extreme rear which enjoys panoramic views over the stunning countryside. The cottage is situated in a picturesque situation surrounded by open countryside and there is immediate access into the network of footpaths and bridleways providing excellent outdoor recreation facility. Rosedale Abbey village lies approximately two miles and provides local provisions store, cafes, pubs, primary school and church. The wider commercial facilities are available in Pickering and Kirkbymoorside.



**Guide Price £265,000**

# 8 Hill Cottages | Rosedale East



## SITTING ROOM

24'4" x 15'0" (7.42m x 4.57m)

Multi burning stove, inset spotlights, central heating radiators, staircase to first floor landing, double glazed window to the front elevation.

## KITCHEN

15'5" x 8'0" (4.70m x 2.44m)

Comprising single drainer sink unit set within work surfaces, wall and base units incorporating drawer compartments, large fitted units with cupboards; Cuisine Master cooker, tiled splash-backs, built in washing machine, built in fridge/freezer, tiled flooring, spotlighting, central heating radiator. Double glazed window to the rear elevation.



## CLOAKROOM

Housing pedestal wash hand basin, low flush w.c.

## FIRST FLOOR LANDING

## BEDROOM ONE

13'0" x 9'9" (3.96m x 2.97m)

With fitted wardrobes, spot lighting, central heating radiator, double glazed window to the rear elevation. Door to "jack and jill" bathroom.



### "Jack and Jill" BATHROOM

Suite comprising panelled bath with shower rose over and shower attachment, pedestal wash hand basin, low flush w.c. Partial wall tiling, central heating radiator.

### BEDROOM TWO

15'7" x 10'2" (4.75m x 3.10m)

With fitted wardrobes, spot lighting, double glazed window to the front elevation; central heating radiator.

### OUTSIDE

To the rear of the cottage there is a small paved area; further paved parking area and GARAGE.

A gate leads to the rear garden which is laid to lawn with a pathway leading to a seating area to the extreme rear enjoying panoramic views of the surrounding countryside.

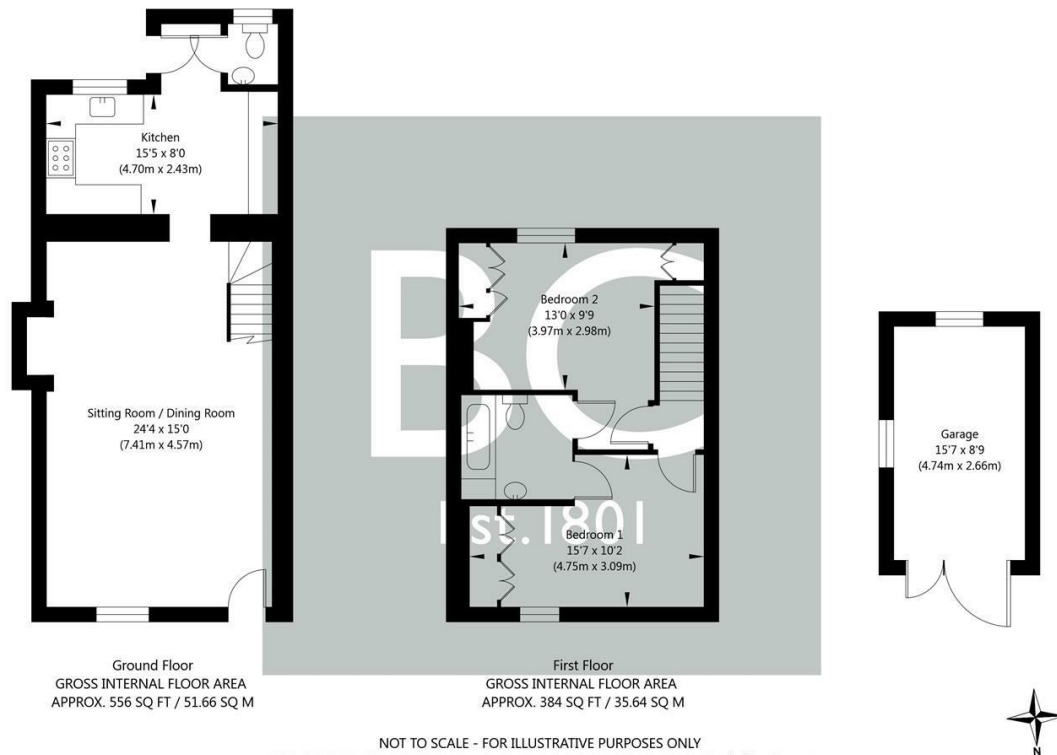
The garden is enclosed with fencing and hedgerow.

### SERVICES

Mains electricity, water and drainage.



# 8 Hill Cottages | Rosedale East



NOT TO SCALE - FOR ILLUSTRATIVE PURPOSES ONLY  
 APPROXIMATE GROSS INTERNAL FLOOR AREA 940 SQ FT / 87.3 SQ M - (Excluding Garage)  
 All measurements and fixtures including doors and windows are approximate and should be independently verified.  
[www.exposurepropertymarketing.com](http://www.exposurepropertymarketing.com) © 2022

## VIEWING

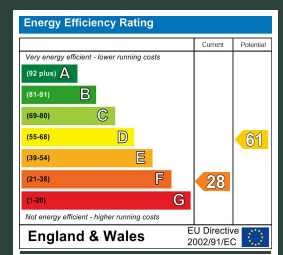
By appointment with the Agents, Pickering office . Tel: 01751 472724.

## COUNCIL TAX BAND

C

## ENERGY PERFORMANCE RATING

F



St Georges House 39 Market Place, Pickering, YO18 7AE

t: 01751 472724

e: [pickering@boultoncooper.co.uk](mailto:pickering@boultoncooper.co.uk)

[boultoncooper.co.uk](http://boultoncooper.co.uk)



### CONSUMER PROTECTION FROM UNFAIR TRADING REGULATIONS 2008

The description contained in this brochure is intended only to give a general impression of the property, its location and features, in order to help you to decide whether you wish to look at it. We do our very best to provide accurate information but we are human, so you should not allow any decisions to be influenced by it. For example any measurements are approximate and, where such things as central heating, plumbing, wiring or mains services are mentioned, we would advise you to take your own steps to check their existence and condition. Although we cannot accept any responsibility for any inferences drawn from this brochure or any inaccuracy in it, we shall always try to help you with any queries.

BoultonCooper for themselves and for the vendors or lessors of the property/properties, whose agents they are, give notice that (i) the particulars are produced in good faith, are set out as a general guide only and do not constitute any part of the contract; (ii) no person in the employment of BoultonCooper has any authority to make or give representation or warranty whatever in relation to this/these property/properties.

**BC**  
Est. 1801