

Boardwalk

St. Johns Road

SOUTHVILLE, BRISTOL

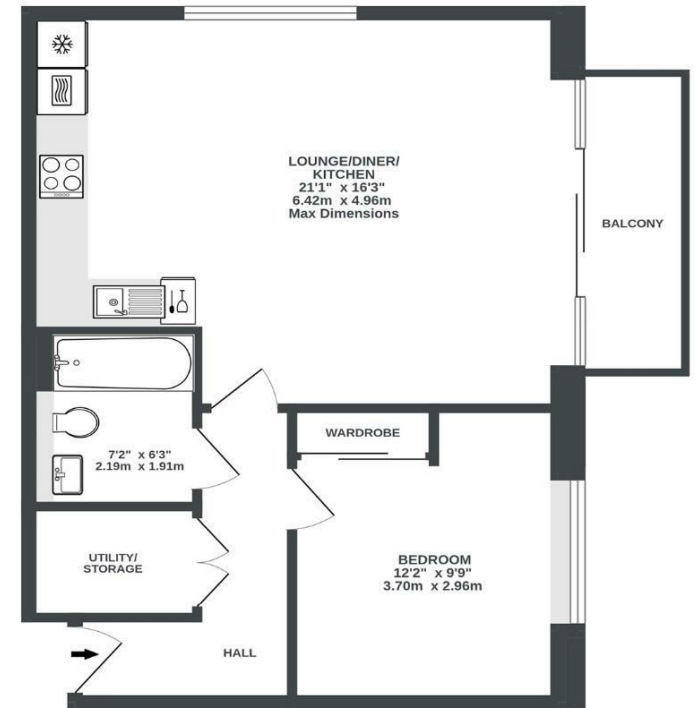
Tobacco Store

SOUTHVILLE

APPROXIMATE FLOOR AREA
54 SQM / 581 SQFT



FOURTH FLOOR
581 sq.ft. (54.0 sq.m.) approx.



Illustrations are for reference purposes only, measurements are approximate, not to scale.



Boardwalk

St. Johns Road

SOUTHVILLE, BRISTOL



£315,000



1 Bedrooms



BS3 1FN



1 Bathrooms

"This has been a great first home for me. I get to wake up in the morning with the sunrise coming through the window, make a coffee and enjoy it on the balcony in the sun."

