



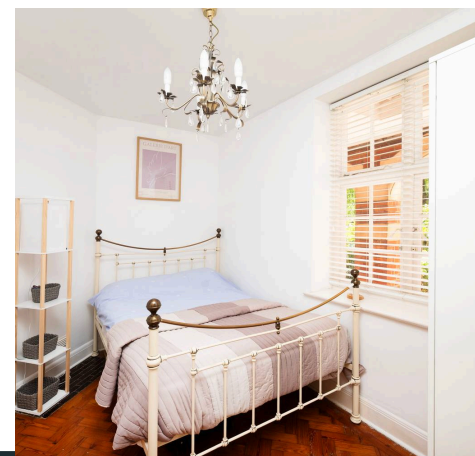
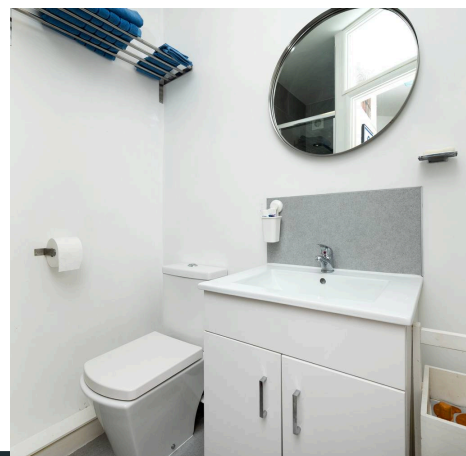
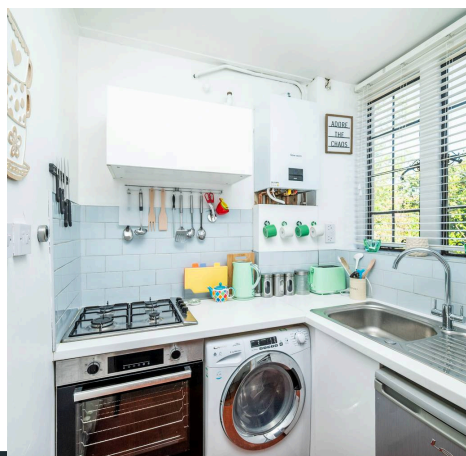
Pearl & Chance

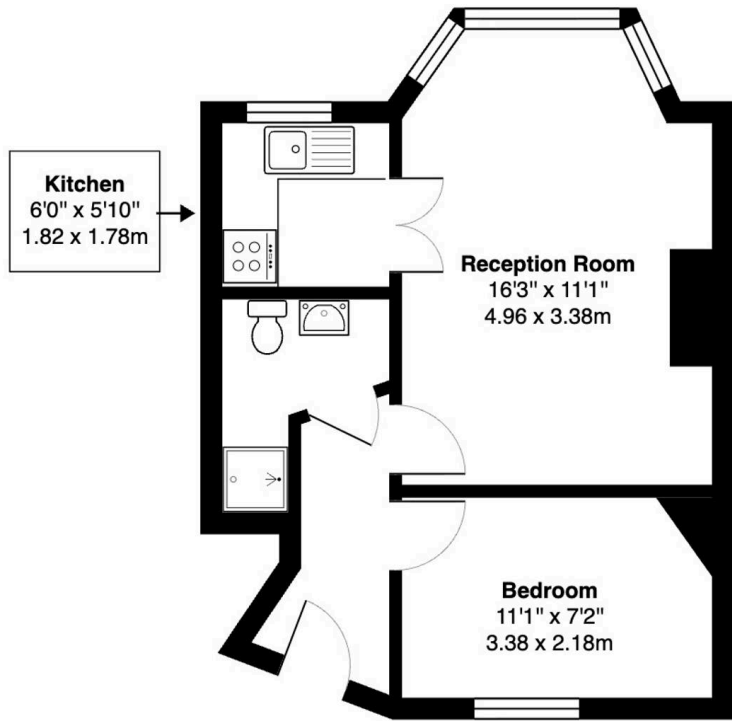
Meadway Court, Hampstead Garden Suburb, NW11  
£1,700 pcm

## Meadway Court, Hampstead Garden Suburb, NW11

**Available immediately and offered unfurnished**, this well presented one bedroom ground floor flat is set within the sought after Grade II listed Meadway Court development. The flat offers a bright bay fronted reception room, separate kitchen and a modern shower room, with beautifully maintained communal grounds and an on site porter. Ideally located within walking distance of Golders Green Underground station, Golders Green Road and Temple Fortune.

- Available Now
- Deposit £1961
- One Bedroom
- Unfurnished
- Ground Floor
- Communal Gardens
- Porter
- Grade II Listed Building
- Close to Golders Green Tube Station





**Ground Floor**

Meadway Court, Meadway, NW11

Total Gross Area: 367 ft<sup>2</sup> ... 34.1 m<sup>2</sup>

All measurements are approximate and for identification guideline purposes only, not to scale.  
Compliant with the RICS code of measuring practice

Energy Efficiency Rating		
	Current	Potential
<i>Very energy efficient - lower running costs</i>		
(92+) <b>A</b>		
(81-91) <b>B</b>		
(69-80) <b>C</b>		<b>76</b>
(55-68) <b>D</b>	<b>64</b>	
(39-54) <b>E</b>		
(21-38) <b>F</b>		
(1-20) <b>G</b>		
<i>Not energy efficient - higher running costs</i>		
<b>England, Scotland &amp; Wales</b>	EU Directive 2002/91/EC	



## Pearl & Chance

1 Hoop Lane, London - NW11 8JR

0208 059 5559

[info@pearlandchance.co.uk](mailto:info@pearlandchance.co.uk)

<http://pearlandchance.co.uk>



IMPORTANT: These sales particulars have been prepared as a general guide only. A detailed survey has not been carried out, nor the services, appliances and fittings tested. Room sizes should not be relied upon for furnishing purposes and are approximate. If floor plans are included, they are for guidance only and illustration purposes only and may not be to scale. If there are any important matters likely to affect your decision to buy, please contact us before viewing the property.