



Kenley Road, TW1

£549,950

Situated in the heart of St Margarets village, is this well presented ground floor maisonette. The property comprises two double bedrooms, a modern kitchen, a good size reception room with doors opening onto a private garden rear garden and a bathroom. Further benefits include a long lease and low service charges with no onward chain.

Kenley Road is a quiet residential road in the heart of St Margarets village. Within 0.2 miles of the mainline train station with its links into London Waterloo, shops and cafés of the village high street. Moor Mead Park and Marble Hill Park are also close by.

Features

- Ground Floor Maisonette
- Two Double Bedrooms
- Excellent Location
- Long Lease
- Private Garden
- No Chain

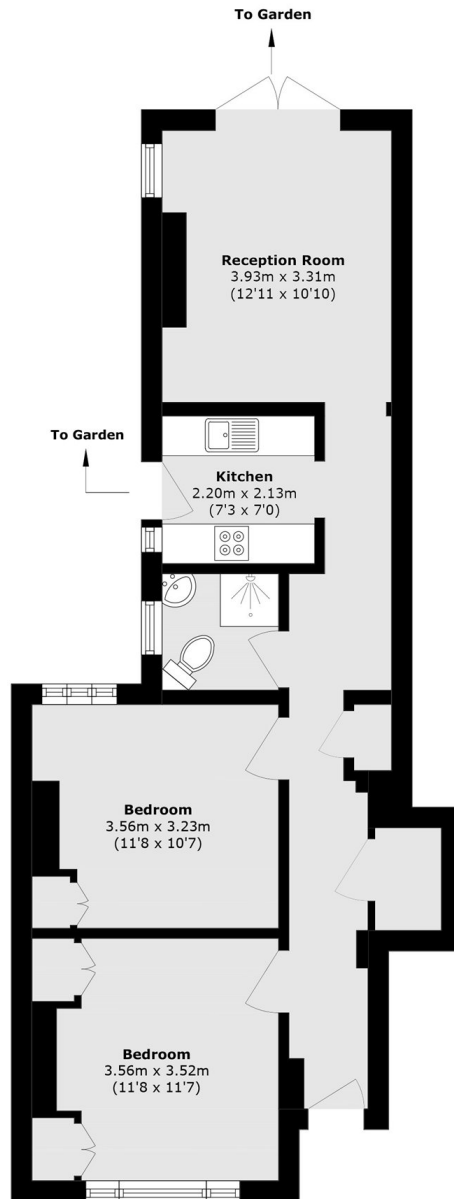


Kenley Road, TW1

The property offers a fluid layout with two generously sized double bedrooms in the front and ample storage space situated in the hallway. There is dual access to the private garden from the kitchen and rear reception room; providing an exceptional sense of flow and space. With the central location, this home is ideal for first time buyers, those who work in the city and also those looking to downsize.



Kenley Road, St Margarets, TW1



Total area (approx.): 61.6 sq. m (663.0 sq. ft)