



Bethnal Green Road, Bethnal Green E2  
London

£1,950 pcm



## Bethnal Green Road, Bethnal Green E2

Bright and well-presented one bedroom top floor flat in a vibrant and well-connected Bethnal Green location.

- One Bedroom Flat
- Top (Third) Floor
- Spacious Open-Plan Living / Kitchen
- Private South-Facing Balcony
- Weavers Fields Location
- Close to Shoreditch and Hackney Road
- Part Furnished
- Available from Early August 2026





Bright and well-presented one bedroom top floor flat in a vibrant and well-connected Bethnal Green location.

Featuring a spacious open-plan living room / fitted kitchen which opens out onto a private south-facing balcony, the property further comprises of a large entrance hallway, double bedroom and bathroom.

Positioned close to some of East London's favourite hotspots including Weavers Fields, Columbia Road, Brick Lane and Hackney Road, this third floor flat puts you at the heart of the action with plenty of transport links also on your doorstep for easy access across the capital.

Perfectly suited to a single professional or a couple, this convenient property with the added bonus of outside space is offered part furnished and is available from early August 2026.

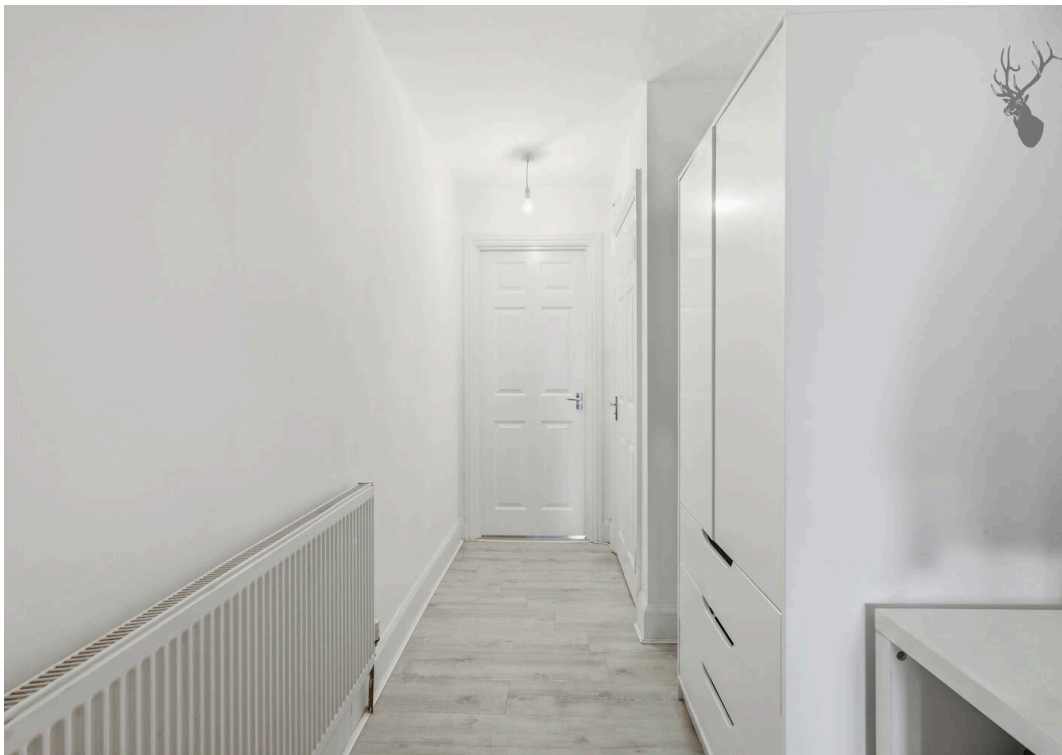
Council Tax band: B

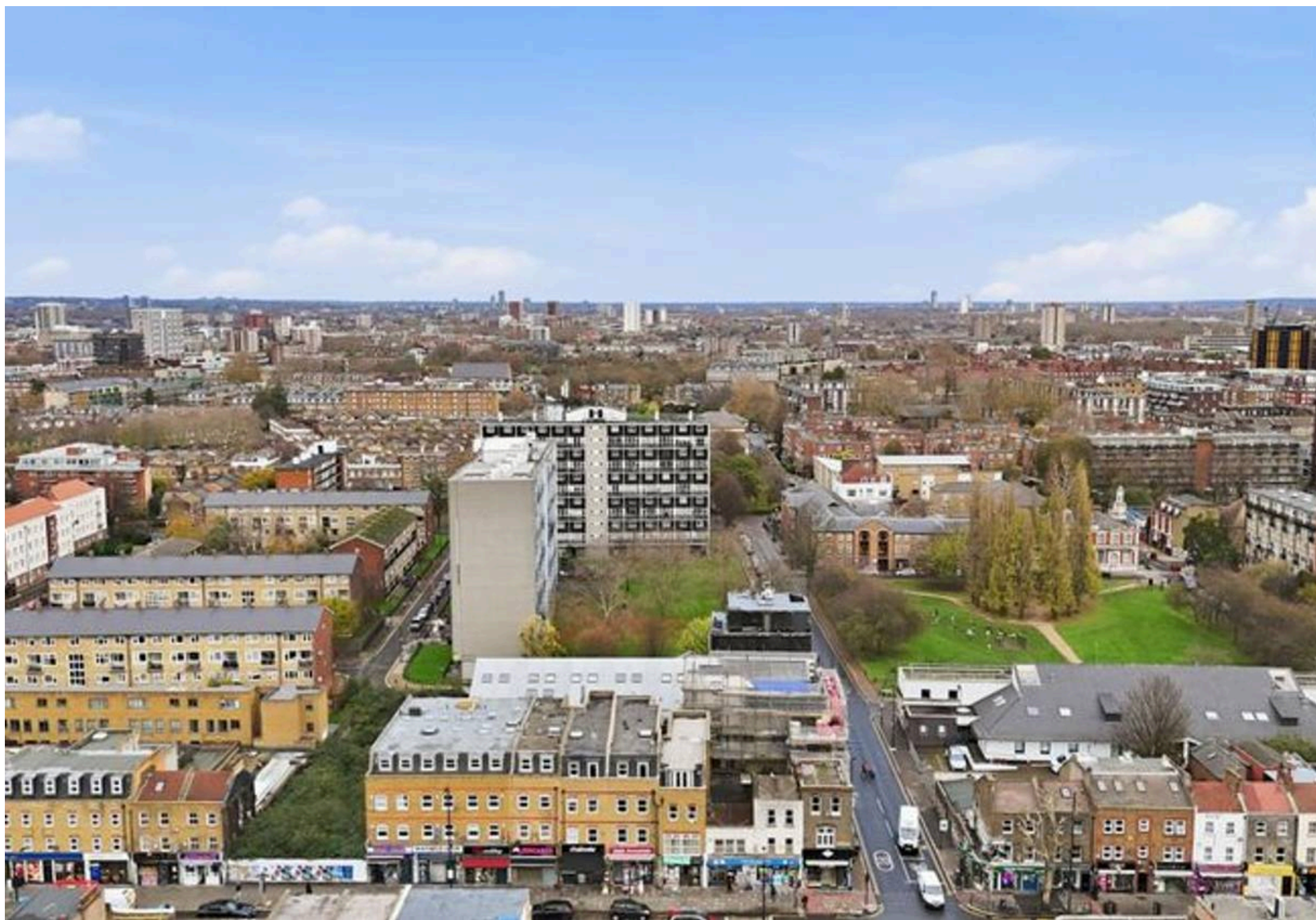
Tenure: Leasehold

EPC Energy Efficiency Rating: C

EPC Environmental Impact Rating:





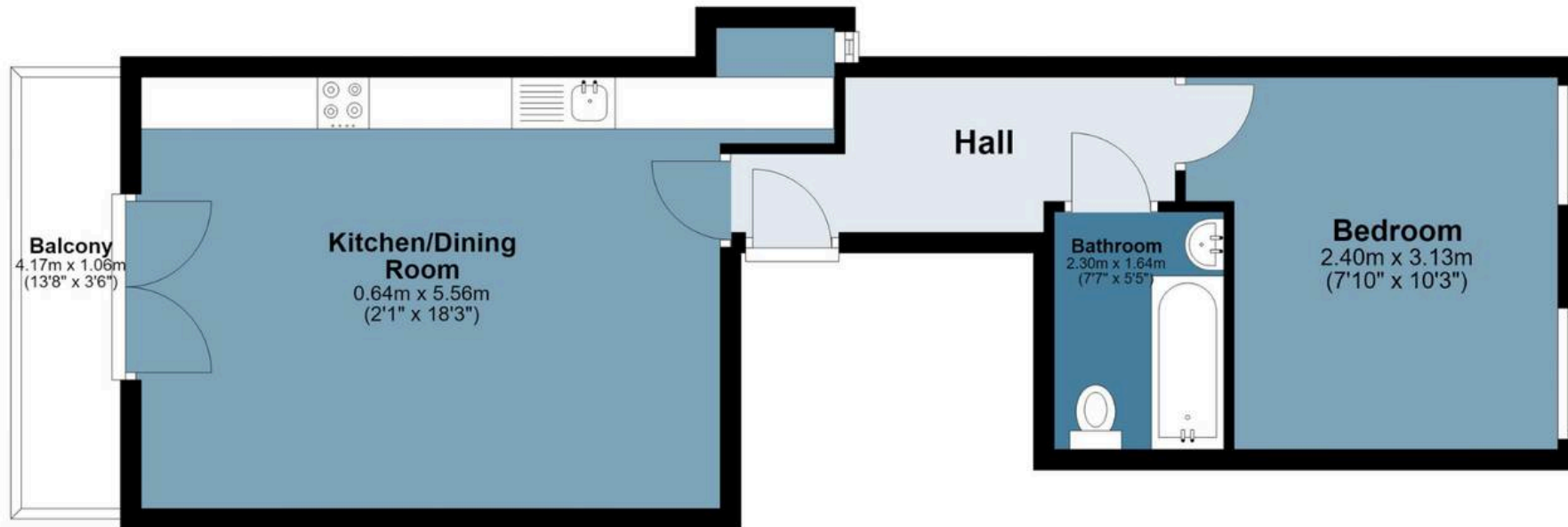
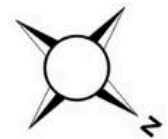


# Bethnal Grn Rd

Approx. Gross Internal Area 46.5 sq. metres (500.3 sq. feet)

## Third Floor

Approx. 46.5 sq. metres (500.3 sq. feet)  
(excluding Balcony)



Measurements are approximate and for illustration purposes only. While we do not doubt the accuracy and completeness, we advise you conduct a careful independent assessment of the property to determine monetary value

# FROM EAST LONDON ENERGY TO WEST ESSEX EASE

## We Make Moving Home Easy.

At Butler and Stag, we do more than just connect London to West Essex – we make the move seamless. With offices spanning from vibrant East London to the tranquillity of West Essex, we understand the nuances of each area and the journey people take between them. Our marketing goes beyond standard listings, showcasing every property with precision, creativity, and reach that others simply can't match. Coupled with an unparalleled attention to detail, from first enquiry to final move-in, we ensure every client and customer feels informed, supported, and confident. Simply put, we do the little things that make a big difference, setting us apart in every step of the property experience.



LONDON   STRATFORD   SOUTH WOODFORD   BUCKHURST HILL   LOUGHTON   EPPING   BEYOND

# Like what you see? Let's talk

Book your **FREE** valuation now



020 8102 1236

[london@butlerandstag.com](mailto:london@butlerandstag.com)

508 Roman Road, Bow, London, E3 5LU

[butlerandstag.uk](http://butlerandstag.uk)

IMPORTANT NOTICE - These particulars have been prepared in good faith and they are not intended to constitute part of an offer or contract. We have not performed a structural survey on this property and the services, appliances and specific fittings have not been tested. All photographs, measurements, floor plans and distances referred to are given as a guide and should not be relied upon.

BUTLER & STAG

