



Mortimer Crescent, NW6

£450 Per week

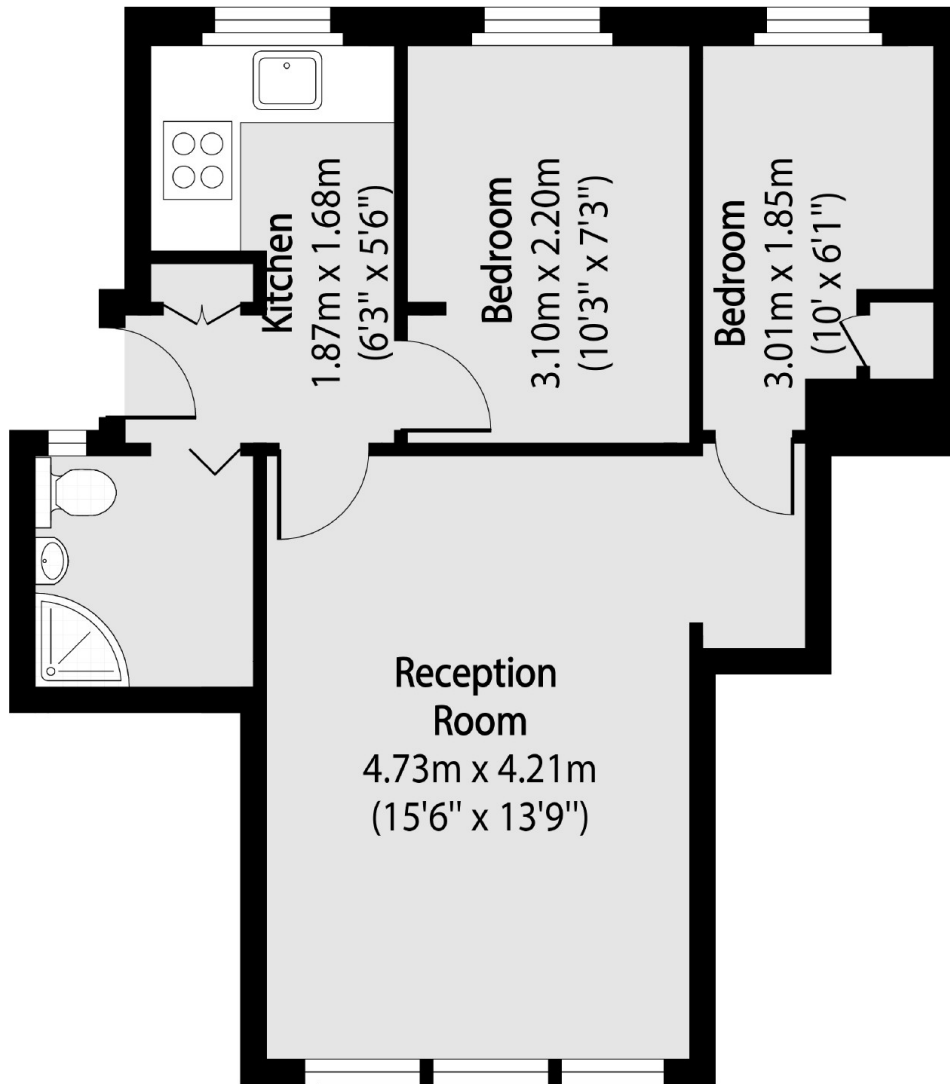
A well presented two double bedroom apartment featuring a separate kitchen and a bright reception room. Compact and in good condition, ideal for a couple.

Conveniently situated near Kilburn High Road Overground station, Kilburn Park tube station on the Bakerloo Line, and within easy reach of local amenities and bus routes.

Features

- Two Bedrooms
- Communal Garden
- Wooden Flooring
- Separate Kitchen
- Heating and Hot Water Inc Porter

Mortimer Crescent,
London, NW6



Total area (approx): 39.25 sq m (422 sq. ft)